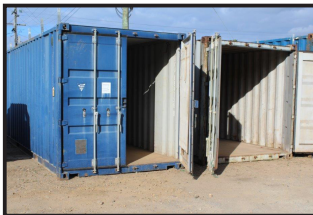


# PUBLIC AUCTION

On instructions from Govt Depts, Administrators, QLD Police, Importers & Private Vendors

**FRIDAY 9 AUGUST - 9.30AM START**

**OFFICE, HOUSEHOLD FURNITURE, VEHICLES**



**HARDWARE & TOOLS:** Echo Chainsaws, Garden Blowers, Stihl Hedge Trimmers, Cut off Saws, Mig Welders, 5Kva Generators, Concrete Helicopter, Flexi Drive Motors, Hilti Hammer Drills, Nails Guns.

**CATERING:** Counter Top Bain Mariers, Refrigerated Display Cabinets, Ice Machine, LG Solar Dom Ovens.

**VEHICLES:** 11 Mitsubishi Triton, 10 Toyota Landcruiser 200 Series, 10 Ford Ranger Dual Cab, 10 Holden Commodore Sedan, 08 Ford Falcon Utility, 07 Yamaha FZ1 1000cc Motorcycle, 06 Ford Courier, 06 Hyundai Getz XL Hatch, 06 Toyota Hilux 4x2 Utility, 04 Toyota Camry 36 Series Altise Sedan, 02 Nissan Navara D22 DX V6 Dual Cab Utility, 97 BMW Z3 Roadster Convertible. **Jacobsen Green King IV Mower, New Holland G6030 4WD Front Deck Mower, John Deere 1565 4WD Front Deck Mower, Club Cadet Zero Turn Mower, Foton 85Hp 4WD Loader Tractor, 06 Polaris Ranger Utility, 13 Gemini 505 Waverider Rigid Lightweight Boat, 11 Polaris Sportsman 4x4 Quad Bike, 2 x 6 Mtr Shipping Containers, 6 Mtr Portable Ablution Block, On Site Portaloo, 6Ft Slasher, Trash Rake, Roofing Iron, Forming Timber, Assorted Building Materials**

**AND SO MUCH MORE...**

**OPEN FOR VIEWING THURSDAY 8<sup>th</sup> 3-6PM**

Visit our website to subscribe for our Flyer & Catalogue

[www.quidauctioneers.com.au](http://www.quidauctioneers.com.au)

*Note: A 15% Buyers Premium will be added to the knockdown price of each lot sold, excluding Vehicles to which a 10% Premium will apply. Vehicles are sold without Statutory Warranty and are not subject to a Cooling off Period. This is a GST Inclusive Sale. E-mail catalogue requests to: [auctions.support@quaid.com.au](mailto:auctions.support@quaid.com.au). Check us out on Facebook.*

**Quaid**  
AUCTIONEERS

**AUCTIONEERS & VALUERS**

401 Sheridan Street, Cairns North - Phone 4051 3300

## TERMS AND CONDITIONS OF AUCTION SALE

Quaid Real Estate Pty Ltd T/As **QUAID AUCTIONEERS (ACN: 010331423)**

### AS AGENT FOR THE SELLER (Hereinafter "the Company")

1. The highest approved bidder for each lot shall be the Purchaser subject to the approval of the Vendor and the reserve price if any.
2. If any dispute or difference shall arise as to the highest bidder the Auctioneer may re-open the bidding and resubmit the lot for sale commencing with the highest amount previously bid for the lot or the Auctioneer may decide on the highest bidder in such other manner as he in his absolute discretion shall deem fit. The decision of the Auctioneer shall be final and no bidder shall have any right of recourse against the Auctioneer, the Company or the Vendor.
3. Where any person is bidding on behalf of another person, the bidder must first provide the Auctioneer with a copy of his written authority to bid to the Auctioneer prior to the commencement of the Auction otherwise the bidder is deemed to be acting on his own behalf.
4. The Auctioneer may at his discretion refuse to accept any bid from any person and no bid if accepted shall be retracted without the consent of the Auctioneer. The Auctioneer may decline the offer for any lot or withdraw any lot or lots from sale prior to the fall of the hammer for the particular lot or lots.
5. Each purchaser shall immediately after the fall of the hammer for a lot show to the Auctioneer their bidder registration number.
6. Immediately after the fall of the hammer a contract for the sale and purchase of the lot between the Vendor and the Purchaser shall be deemed to be formed at the purchase price upon the terms advised.
7. If the Property is not sold at Auction the Vendor may personally, or by the Company or by any agent negotiate freely with any one or more of the bidders or any other person(s) without incurring liability to any of the bidders.
8. The whole of the lots having been available for inspection prior to the auction no allowance or refunds will be made nor will any Purchaser be permitted to reject any lot on the ground that it is not correctly described in the catalogue. **The said lots are to be taken with all faults and defects (if any) and will be at the risk of the Purchaser on the fall of the hammer and thereafter the Vendor will be free of all responsibility for safe guarding the lot and will not be liable for any loss of or damage to the lot sold whether such loss or damage is caused or contributed to be any act neglect or default of the vendor its servants employees or agents.**
9. Neither the Vendor nor the Company make any representation express or implied or give any warranty express or implied as to the state condition or suitability of the lot or any part of it either as it exists or for any proposed usage. Any bidder/Purchaser must rely entirely upon their own inspection searches enquiries or advices as to any matter affecting the lot or any part of it. Any information given in relation to the lot by the Vendor or the Company or any agent on their behalf is given and accepted entirely without responsibility.
10. The purchaser accepts all risk and responsibility for losses, damages, personal injury and other consequences resulting directly or indirectly from the purchase of any lot and indemnifies the Vendor and the Company against all expenses, losses, damages and costs the Vendor or the Company may incur directly out of or in connection with: a) any personal injury caused to any person as a result of the use of the lot purchased from the Vendor/Company; b) any damage caused as a result of the use of any lot purchased from the Vendor/Company; and c) any negligence, breach of duty or breach of statute by the purchaser in connection with the use of the lot purchased from the Vendor/Company. To the maximum extent permitted by law, the Vendor/Company excludes all liability arising directly or indirectly from the purchase of the lot by the Purchaser.
11. The balance of the purchase price shall be paid by the Purchaser in cash, direct debit, eftpos, credit card (visa or mastercard), no later than 4.00pm AEST on the day of the sale (unless prior arrangements have been made by the Purchaser with the Vendor). In the event of delivery being made or possession obtained by the purchaser prior to payment in full of the purchase price title to and property in the lot does not pass to the Purchaser until payment has been made in full.
12. Should any deficiency arise between the quantity of goods described at the time of sale and that available at the time for delivery the Purchaser shall take and the Auctioneer shall be required to effect delivery of only the quantity actually so available. No compensation will be paid in respect of any such deficiency but the Purchaser may claim a pro-rata adjustment of the purchase price. No adjustment will be made unless the Purchaser makes this claim at or before the time of delivery.
13. All lots which have been paid for in full must be removed by the Purchaser at the Purchaser's expense by 4.30pm AEST on the day of the sale (unless prior arrangements have been made by the Purchaser with the Vendor) or as specified at the time of sale.
14. Upon any Purchaser failing to comply with any of the above conditions all monies received in part payment of the purchase price shall be absolutely forfeited to the Vendor and all lots not removed as aforesaid may be re-sold by public auction or private contract and the deficiency in price (if any) on such resale together with all costs and charges incurred in attending thereto shall be paid forthwith by the defaulting Purchaser and if not paid the Vendor has the right to recover such amount from the defaulting Purchaser as a debt and the Purchaser shall have no claim against the Vendor or the Company as a result of same.
15. Time shall be of the essence of the sale of any lot.
16. The Auctioneer reserves the right to one bid.
17. Terms are strictly cash before delivery.
18. Special Conditions Regarding: Electrical Appliances: These appliances are in a used condition and no warranty is given that their present condition complies with the safety requirements of the State Electricity Commission or that they are otherwise fit for use. It is pointed out that under the State Legislation the Purchaser is required before re-sale or use to have the appliance examined and repaired by a registered electrical contractor.
19. The Purchaser acknowledges that all lots purchased are subject to a "Buyers Premium" at a rate as stated in the Company's advertisements and catalogues. The Buyers Premium will be payable at the same time as the purchase price and is payable to the Company in consideration for services and facilities provided to the Purchaser by the Company.
20. A right to bid by or on behalf of the Vendor is expressly reserved.
21. Unless otherwise stated, goods are sold on a GST Inclusive basis.
22. The purchaser acknowledges that the Company is acting as authorised agent of the Vendor and any rights of action he may have in respect to the lots purchased by him lie against the Vendor and not the Company.
23. No servant or agent of the Company is authorised to waive, add to or vary these conditions without the written authority of the Managing Director.
24. \* Denotes that the Company has a beneficial interest.  
**These conditions are to be read in conjunction with any special conditions outlined in the sales catalogue. Where there is inconsistency between the conditions herein and the Auction Catalogue, the Catalogue will take precedence.**

**NOTE TO BUYERS:**

- THIS IS A GST INCLUSIVE SALE. A 15% BUYERS PREMIUM APPLIES TO THE KNOCKDOWN PRICE OF EACH LOT SOLD EXCLUDING VEHICLES TO WHICH A 10% BUYERS PREMIUM & SELECTED MOBILE PLANT TO WHICH AN 11% BUYERS PREMIUM WILL APPLY.
- VEHICLES/MOBILE PLANT ARE SOLD WITHOUT A STATUTORY WARRANTY, ARE NOT SUBJECT TO A COOLING OFF PERIOD AND ARE SOLD UNREGISTERED AND WITHOUT A ROADWORTHY CERTIFICATE. "CP" INDICATES VEHICLES AUSTRALIAN COMPLIANCE DATE.
- TESTING FACILITIES FOR ELECTRICAL ITEMS ARE AVAILABLE ON THE DAY OF INSPECTION. PLEASE SEE OUR STAFF FOR ASSISTANCE.
- PURCHASERS OF ALCOHOL MUST BE OVER 18 YEARS OF AGE.
- PURCHASERS OF MOBILE PHONES/TABLETS ARE REMINDED THAT GOODS ARE SOLD IN AN "AS IS" CONDITION AND IT IS THE RESPONSIBILITY OF THE BUYER PRIOR TO SALE TO ENSURE THE CONDITION AND SUITABILITY OF THE PHONES/TABLETS PURCHASED. NO ASSISTANCE CAN BE PROVIDED WITH ANY PIN OR LOCK CODES REQUIRED FOR THE OPERATION OF PHONES/TABLETS.
- PLEASE NOTE SOME LOTS ARE SOLD ON BEHALF OF THE LOSS ADJUSTORS. IT IS RECOMMENDED THAT INTENDING PURCHASERS INSPECT INDIVIDUAL ITEMS PRIOR TO BIDDING.
- PLANT SAFETY INFORMATION: EQUIPMENT OFFERED FOR SALE AT THIS AUCTION MAY NOT COMPLY WITH WORKPLACE HEALTH & SAFETY STANDARDS. PRIOR TO RE-USE PURCHASERS ARE REMINDED OF THEIR OBLIGATIONS AS AN OPERATOR OF PLANT UNDER RESPECTIVE STATE BASED OHS LEGISLATION TO COMPLETE PLANT RISK ASSESSMENTS FOR THE INSTALLATION, COMMISSIONING AND OPERATION FOR THE PLANT ITEMS PURCHASED.
- WHERE MULTIPLE QUANTITIES ARE OFFERED AT AUCTION, LOTS ARE SOLD ON A PER EACH BASIS, WITH THE HIGHEST BIDDER GIVEN THE OPPORTUNITY TO TAKE 1, OR MORE AT THE BID PRICE, OR IN MINIMUM QUANTITIES AS NOMINATED BY THE AUCTIONEERS AT THE TIME OF SALE.
- ANY MENTION OF PRECIOUS METALS AND/OR GEMS, CARAT OR WEIGHTS CONTAINED IN THE CATALOGUE IS A GUIDE ONLY. NO SALE SHALL BE INVALIDATED AND NO COMPENSATION SHALL BE PAID IN RESPECT OF ANY FAULT (WHETHER ASCERTAINABLE ON INSPECTION OR LATENT), OR ERROR OF DESCRIPTION IN THE AUCTION CATALOGUE OR OTHERWISE. THE MENTION OF PRECIOUS METALS, GEMS, CARATS OR WEIGHTS IS INCLUDED TO ASSIST POTENTIAL BIDDERS TO DECIDE WHETHER OR NOT TO ATTEND THE AUCTION AND DOES NOT CONSTITUTE ANY WARRANTY AS TO QUALITY, FITNESS FOR PURPOSE OR ACCURACY, ALL CONDITIONS AND WARRANTIES IMPOSED BY STATUTE (IN RELATION TO THE STATE, QUALITY OR FITNESS OF THE GOODS AND OF EVERY OTHER KIND) ARE HERBY EXPRESSLY EXCLUDED. NO RESPONSIBILITY IS ACCEPTED BY THE AUCTIONEER OR HIS PRINCIPAL FOR THE ACCURACY OF ANY STATEMENT, OPINION OR INFORMATION CONTAINED IN THIS CATALOGUE AND POTENTIAL BIDDERS SHOULD RELY ON THEIR OWN ENQUIRIES ON INSPECTION BEFORE BIDDING.
- PAYMENT ACCEPTED CASH, DIRECT TRANSFER, EFTPOS, VISA & MASTERCARD ONLY.
- BANK ACCOUNT DETAILS FOR DIRECT DEPOSITS:

BANK:	ANZ
BRANCH:	ABBOTT STREET, CAIRNS
BANK ACCOUNT NAME:	QUAID REAL ESTATE TRUST ACCOUNT
BRANCH NO.:	014 734
ACCOUNT NO.:	3818 39175

---

LOT NO	QTY	DETAILS
--------	-----	---------

---

## SALE STARTS AT LOT 1 AT 9.30AM

### SPECIAL LOT 692 TO 812 WILL BE OFFERED AT 12 NOON

1	6	<b>Samsung TAB Active T365 Tablets</b> 16Gb
2	2	<b>Apple iPad 2</b> 4G, 16Gb
3	1	<b>Apple iPhone 5</b> 16Gb
4	1	<b>Apple iPhone 5</b> 16Gb
5	2	<b>Apple iPhones 5c</b> 16Gb
6	1	<b>iPhone 4S</b> Model A1387, 64Gb, Unlocked, Charging Dock, Ear Phones, Car Charger
7	1	<b>iPod Touch</b> Model A1288, 8Gb, Charger, Manual, in Box
8	3	<b>Timber Laminate Office Drawers</b> with (3) Drawers, 480 x 500 x 680mm
9	1	<b>Digital Clock</b> Date/Day/Temperature
10	1	<b>Panasonic SIP Cordless Phone</b> Model KT-TGP600AL
11	1	<b>Portable Phone Charger</b> with Internal Card Holder
12	1	<b>Pair of Yamaha Headphones</b> Model HPH-MT120, Manual & Wavelab LE7 Audio Editing & Mastering Software
13	1	<b>Sony Cybershot Digital Camera</b> Model DSC-W530, 14.1Mp, Charger
14	1	<b>LEAP Motion Controller</b> Model LM-010
15	1	<b>Nintendo DS</b> with Charger & (9) Assorted Games
16	1	<b>Timber Desk</b> with Leather Inlay, (3) Drawers & Cupboard, Note: Handle Missing, 1600 x 850 x 850mm
17	1	<b>Set of (2) Logitech 2.0 Stereo Speaker System</b> incl. Manual



LOT NO	QTY	DETAILS
18	1	<b>Western Digital My Book External Hard Drive (As New)</b> 250Gb, in Box
19	1	<b>Livescribe Pulse Smartpen</b> incl. (2) Journals of Dot Paper & Pen Pad
20	1	<b>Ectaco iTravel Handheld Electronic Language Teacher/Dictionary/Audio Phrasebook/Travel Guide</b> Model ITRAVLTL-6, in Case, Power Cable
21	1	<b>Digitech Digital Voice Recorder (As New)</b> Model XC-0381, MP3 Storage, Earphones, in Box
22	1	<b>Microphone</b>
23	1	<b>Dell Inspiron 1150 Laptops</b> with Intel Celeron 2.4Ghz Processor, 512Mb RAM, 25Gb HDD, with Bag, Note: No Charger
24	1	<b>Toshiba Portege Laptops Model Z930</b> Intel Core i5 1.8Ghz Processor, 10Gb RAM, 100Gb HDD
25	1	<b>Timber Laminate Office Tables</b> 2000 x 900 x 740mm
26	1	<b>Dell Optiplex 990 Desktop Computers</b> with Intel Core i7 3.4Ghz Processor, 4Gb RAM, 100Gb HDD, Note: No Cables
27	1	<b>Dell Optiplex 780 Desktop Computers</b> with Intel Core 2 vPro Processor, 4Gb RAM, 250Gb HDD, Note: No Operating System or Power Cable
28	1	<b>Asus Desktop Computer</b> with Intel Core i3 3.7Ghz Processor, 4GB RAM, Note: No HDD
29	1	<b>Qty of (4) Computer Items</b> incl. Antec Desktop, MSI Graphics Card, Motherboard and Keyboard
30	1	<b>D Link Network Attached Storage</b> Model DNS-343, No Power Cable
31	1	<b>Samsung Syncmaster LED 23" Monitor</b> Model BX2335, with Power & DVI Cable
32	1	<b>Soniq 43" LED Television</b> Model E43V15D-AU, Note: No Remote Control
33	1	<b>Samsung 32" Television</b> Model UA32D4000NM, Note: No Remote Control
34	1	<b>Dick Smith 31.5" LED Television</b> Model GE6876, Note No Remote Control
35	1	<b>Samsung 22" Television</b> Model LA22A450C1, No Remote Control

---

LOT NO	QTY	DETAILS
36	1	<b>Dick Smith 19" LED Television</b> Model GE6820, with Built in DVD Player, Remote Control & Manual, Note: DVD Player Not Working
36.1	23	<b>Boxes of (3) Venturi Television Wall Brackets</b> Model VP-T150
37	2	<b>Quest Point of Sale Systems</b> incl. Cash Till and Printer
38	1	<b>Aloha Point of Sale System</b> incl. (2) Screens, (2) Printers, (2) Cash Drawers, Printer Rolls & Manual, Power Cable
39	1	<b>Dell 19" Monitor</b> Model 1908FPB, Note: No Cable
40	1	<b>Dell 19" Monitor</b> Model 1908FPB, Note: No Cable
41	1	<b>Dell 19" Flat Panel Monitor</b> Model 1908FPT, Note: No Power Cable
42	1	<b>LG Flatron Monitor</b> Model L1930SQ
43	2	<b>Dell 19" Monitors</b> Model 1908FPB, Power Cable & VGA Cable
44	1	<b>Audiosonic TV Sound Bar</b> with Remote & Cables
45	1	<b>Denon DJ Mixing Device</b> Model DN-2600F
46	1	<b>Akai DVD Player</b> Model ADVD11BLACK, Note: No Remote Control
47	1	<b>Denon Integrated Network AV Receiver</b> Model AVR-1713 incl. Remote & Power Cable
48	1	<b>Yamaha Natural Sound 5 Disc CD Player</b> Model CDC-575
49	1	<b>Timber Office Desk</b> 1800 x 900 x 730mm
50	1	<b>Digitek 7" Wide Screen Colour Video Door Phone</b> Model 17VDP7, with Accessories in Box
51	2	<b>Mouse Pads</b> with Cordless Phone Charger
52	1	<b>Qty of (2) Telephone Items</b> incl. Nortel Conference Phone & Headset
53	1	<b>Qty of (4) Magellan External Antennas</b>

---

LOT NO	QTY	DETAILS
54	2	<b>Thales Mobile Mappers</b> incl. Magellan Vehicle Mounting Bracket
55	1	<b>Savior G7 Remote Control Buggy</b> with Remote Control
56	1	<b>Kogan Flying Ball (As New)</b> with Transmitter, Charger & Manual, in Box
57	33	<b>Cisco Catalyst 3600 Series Access Points</b> with Integrated Antennas, Wireless Access Point LED Indicator, Ram 256UB, Model Aircap 36021-N-KW
58	5	<b>Timber Laminate Drawers with (3) Drawers</b> Note: No Key, 400 x 450 x 520mm
59	8	<b>Cisco Dual Band 4 Element Mimo Antennas</b> Model AIR-AUNT2565-R
60	1	<b>Qty of (60) Assorted DVDs</b> incl. Chaos, Rambo Trilogy, Aliens, 16 Blocks, The Mummy Returns
61	1	<b>Timber Laminate Office Desk</b> 1240 x 590 x 740mm
62	1	<b>Qty of Assorted Nintendo Wii Console &amp; PSP</b> incl. 16 Games, Wii Accessories, Bag
63	1	<b>Canon Pixma Printer</b> Note: No Power Cord
64	1	<b>Timber Laminate Office Desk</b> 1500 x 700 x 760mm
65	1	<b>Timber Laminate Office Desk</b> 1600 x 610 x 720mm
66	1	<b>Canon Pixma Multifunction Centre</b> Model MX436, Power & USB Cables
67	2	<b>HP Photosmart 5520 Multifunction Printers</b> Model SNPRH-1103, with Power Cable
68		<b>Vacant Lot</b>
69	1	<b>Draper Baronet Motorised Projector Screen</b> 2440 x 1830mm
70	1	<b>Office Chair</b> on Castors, Fabric Seat & Back
71	3	<b>Office Chairs</b> Gas Lift, on Castors, Green Fabric Seat & Back
72	1	<b>Telstra T700 Corded Telephone</b>
73	1	<b>Timber Laminate Office Drawers</b> with (3) Drawers, on Castors, Note: No Keys, 465 x 450 x 690mm

---

LOT NO	QTY	DETAILS
74	1	<b>White Computer Desk</b> on Castors, with Under Shelf, 900 x 445 x 720mm
75	17	<b>Stainless Steel Tension Catch Bangles</b> Etching
76	54	<b>Stainless Steel Engraved Tension Catch Bangles</b> with Diamante
77	14	<b>Assorted Stainless Steel Bangles</b>
78	13	<b>14ct Rold Gold Bangles</b> on Base Metal
79	1	<b>Silver Necklaces</b>
80	17	<b>Silver Chain Bracelets</b>
81	2	<b>Silver Bracelets</b>
82	1	<b>Gold Costume Necklace</b> with Pearl & Cubic Zirconia Pendant
83	9	<b>Stainless Steel Double Bangles</b>
84	46	<b>Silver Chain Necklaces</b>
85	1	<b>Timber Laminate Cabinet</b> with (4) Drawers, 670 x 1040 x 490mm
86	1	<b>Timber Laminate Hutch</b> with (2) Shelves, 1250 x 720 x 490mm
87	1	<b>Qty of (3) Assorted Items</b> incl. Ocarina Musical Instrument, HD Action Camera & Selfie Stick
88	1	<b>Red Barron Model Plane Kit</b>
89	1	<b>Black Desk Lamp</b> Model MF6379, 240V
90	1	<b>Wynston Sit/Stand Desk</b> 600 x 580mm
91	1	<b>Paper Shredder</b> Model OW510SC
92	1	<b>Canon LBP600 Printer</b> Model F158200
93	1	<b>TDE Systems Laminator</b> Model L303
94	1	<b>Fellowes Paper Shredder</b> Model P-35C
95	1	<b>Timber Laminate Office Desk</b> 1800 x 900 x 740mm

---

LOT NO	QTY	DETAILS
96	1	<b>Precision Filing Cabinet</b> with (4) Drawers, with Key, 1310 x 500 x 640mm
97	1	<b>Brownbuilt Metal Filing Cabinet. 4 Drawer</b> Lockable with Key
98	1	<b>Elitebuilt Metal Filing Cabinet</b> with (4) Drawers & Key, 460 x 610 x 1320mm
99	1	<b>Precision Metal Filing Cabinet</b> with (4) Drawers, No Key, 490 x 640 x 1310mm
100	1	<b>Precision Filing Cabinet</b> with (3) Drawers, No Key, 860 x 370 x 1565mm
101	3	<b>Office Chairs</b> Gas Lift, on Castors, Beige Fabric Seat & Back
102	1	<b>Office Chair</b> Gas Lift on Castors, Fawn Fabric Seat & Back
103	24	<b>Boxes of (10) Sony CD-R 700Mb CDs</b>
104	1	<b>Metal Cash Box</b> Lockable with Key
105	1	<b>Godfrey Metal Filing Cabinet</b> with (2) Drawers, Lockable with Key
106	1	<b>Timber Laminate Office Cabinet</b> with (2) Drawers & Under Shelf, 480 x 500 x 670mm
107	1	<b>Qty of (12) Assorted LP Vinyl Records</b> incl. (6) Elvis Presley, Peter Paul & Mary, Rod Stewart
108	1	<b>Precision Filing Cabinet</b> with (2) Drawers, 495 x 645 x 730mm
109	1	<b>Qty of Assorted Office Items &amp; Accessories</b> incl. Screen Protectors, Head Phones & Filing Rack
110	1	<b>Elite Built Metal Filing Cabinet</b> with (4) Drawers, with Keys
111	1	<b>Brownbuilt Yellow Filing Cabinet</b> with (4) Drawers, Note: No Key
112	2	<b>Precision Filing Cabinets</b> with (4) Drawers, Note: No Keys, 1310 x 500 x 650mm
113	1	<b>Server Cabinet</b> 620 x 900 x 1210mm
114	1	<b>Hallway Table</b> with Metal Frame, Concrete Top, 920 x 610 x 775mm
115	1	<b>Qty of (5) Assorted Framed Pictures &amp; Photo Frame</b>

LOT NO	QTY	DETAILS
116	1	<b>Hallway Table</b> with Metal Frame, Concrete Top, 1020 x 410 x 820mm
117	1	<b>Beurer Foot Massager</b> Model M15601
118	1	<b>Qty of (13) Assorted DVDs</b> incl. South Park, Flash Gordon, The Night of the Hunter, etc
119	13	<b>Abstract Framed Artworks</b> 500 x 500mm
120	1	<b>Dining Table</b> with Metal Frame & Concrete Top, 910 x 910 x 775mm
121	1	<b>Qty of (5) Boxes of Assorted Travel Pack Items</b> incl. Choyer Lotion & Shampoo, Shower Caps
122	486	<b>New Elements of Makeup Brush Sets 8 Brushes Per Set</b> in Case
123	1	<b>Timber Table</b> 910 x 1500 x 780mm
124	1	<b>Qty of (5) Assorted Framed Artworks</b> Moonlight Waters, Anton Tieck, etc
125	4	<b>Timber Laminate Desks</b> with (4) Drawers, 2500 x 640 x 750mm
126	1	<b>Qty of (20) Assorted Framed Artworks</b> incl. Gilbert Kitten, Indian Horse Riders, etc
127	1	<b>Qty of (5) Assorted Framed Artworks</b> incl. Royal Painting of Hut, Two Dogs, Wedding Portrait
128	1	<b>Timber Table</b> with Metal Frame, 1520 x 900 x 750mm
129	1	<b>Qty of Assorted Remote Control Toys</b> incl. Helicopter & Plane with Controls
130	1	<b>Circular Table</b> 1100 x 745mm
131	1	<b>Coastal Navigation Guide</b> for Australian Mariners, incl. Books & VHS Video
132	1	<b>Qty of (30) Assorted Fast Lane Toy Cars</b> in Plastic Suitcase
133	1	<b>Qty of (9) Assorted DVDs</b> incl. Bonanza Series, Madagascar, etc
134	1	<b>Artificial Intelligence AI UFO</b> with Remote

LOT NO	QTY	DETAILS
135	1	<b>White Laminate Office Desk</b> with (3) Drawers, 1205 x 600 x 735mm
136	9	<b>Square Rattle &amp; Hum Branded Timber Tables</b> with Metal Legs, 790 x 800 x 760mm
137	28	<b>Chrome Polished Handles</b> 298 x 32mm
138		<b>Vacant Lot</b>
139	15	<b>Chrome Brushed Handles</b> 180 x 49mm
140	30	<b>Chrome Polished Handles</b> 90 x 22mm
141	39	<b>Chrome Brushed Handles</b> 232 x 32mm
142	30	<b>Chrome Brushed Handles</b> 299 x 30mm
143	23	<b>Matt Chrome Bar Handles</b> 392 x 35mm
144	1	<b>Qty of (2) Bags</b> incl. Backpack & Laptop Bag
145	33	<b>Boxes of (5) Abstract Framed Artworks</b> 800 x 350mm
146	8	<b>Student Desks</b> Metal Frame & Laminate Top, 700 x 530 x 730mm
147	8	<b>Boxes of (10) Assorted Abstract Framed Artworks</b>
148	44	<b>Boxes of (5) Assorted Abstract Framed Artworks</b> 550 x 550mm
149	1	<b>Rosewood Foldout Writing Desk</b> with (2) Drawers, 920 x 430 x 1070mm
150	20	<b>Timber Framed Mirrors</b> 1200 x 1970mm
151	1	<b>King Size Bed</b> with Leather Bed Head & Wonderest PS200 Mattress
152	6	<b>Hour Glass Style Glass Vases</b>
153	2	<b>Timber Bedside Tables</b> with Under Shelf
154	6	<b>Glass Display Bowls</b>
155	1	<b>Coffee Table</b> with Metal Frame, Concrete Top, 920 x 510 x 445mm



LOT NO	QTY	DETAILS
156	5	<b>Glass Vases</b>
157	1	<b>Rosewood Foldout Hand Carved Writing Desk</b> with (3) Drawers, 760 x 440 x 1070mm
158	5	<b>Net Curtains</b> 1050 x 2150mm
159	15	<b>Assorted Reef Artworks</b> Timber Frame, 1200 x 960mm
160	5	<b>Timber Suitcase Stands</b> 620 x 540 x 470mm
161	1	<b>Timber Childrens Bike</b>
162	6	<b>Solid Timber Entertainment Units</b> with Granite Top, (3) Cupboard Doors & (2) Drawers, 1750 x 615 x 1100mm
163	1	<b>Qty of Assorted Childrens Toys &amp; Books</b>
164	11	<b>Timber Grain Bedside Tables</b> with Drawer, 600 x 500 x 510mm
165	6	<b>Steel Framed Leather Chairs</b>
166	20	<b>Vinyl Brown Swivel Chairs</b> with Chrome Legs
167	1	<b>Metal Stool</b> Gas Lift, with Leather Seat & Back
168	2	<b>Two Seater Lounges</b> with Metal Legs, Blue Fabric & Navy/White Throws
169	64	<b>Timber &amp; Green Fabric Arm Chairs</b>
170	1	<b>Qty of Assorted Homeware Items</b> incl. Telefunken Speakers, Clock, Pompadour Bowl, Box Contents
171	1	<b>Qty of Assorted Music Books</b> incl. Ten Test Papers, God is So Good, Box Contents
172	1	<b>Qty of Assorted Books</b> incl. History of WWII, Australian Encyclopedia Volume 2, Pears Cyclopaedia, etc, Box Contents
173	1	<b>Qty of Assorted Glassware Items</b> incl. Lamp Shade, Light Cover, Parfait Glasses, Box Contents
174	1	<b>Qty of Assorted Homeware Items</b> incl. Cane Baskets, Doll Furniture & Hats
175		<b>Vacant Lot</b>
176	1	<b>Qty of (7) Assorted Framed Artworks</b> incl. Gilt Framed French Tapestry, Dr W G Grace, Birds in Bush

---

LOT NO	QTY	DETAILS
177	1	<b>Qty of Assorted Vintage Style Items</b> incl. Vases, Ceramic Items, Trays, Box Contents
178	1	<b>Qty of Assorted Vintage Style Homeware Items</b> incl. New Zealand Tea Towel, Oven Mitts, Pillowcase, Box Contents
179	1	<b>Qty of Assorted Glassware Items</b> incl. Retro Style Smoked Glass, Retro Style Black Glass, Vintage Style Ruby Wine Glass
180	1	<b>Qty of Assorted Homeware Items</b> incl. J & G Meakin Victoria Terrine, Crown Devon Leaf Dish, Royal Albert Milk Pourer, Box Contents
181	1	<b>Qty of Assorted Homeware Items</b> incl. Retro Style Travel Cup, Leather Case, Marvel 8 Ply Cotton, Royal Winton Pink Petuma Butter Dish Under Plate, Box Contents
182	1	<b>Yamaha Digital Piano</b> Model P-105, Timber Laminate Stand, with Stool, Power Cables, Manual & Alfreds Basic Piano Course Book
183	1	<b>Timber Hand Carved Giraffe Shaped Walking Stick</b>
184	1	<b>Timber Walking Stick</b>
185	1	<b>Bburago Volkswagen 2000 Metal Model Car (As New)</b> Model 7029, in Box, Made in Italy
186	1	<b>Collapsible Music Sheet Stand</b> with Carry Bag
187	1	<b>Timber Coffee Table</b> 745 x 745 x 380mm
188	5	<b>Three Seater Lounges</b> with Single Arm Rest & Ottoman
189	5	<b>Two Seater Brown Fabric Lounges</b>
190	1	<b>White Timber Entertainment Unit</b> with (2) Doors & (2) Shelves, 1800 x 455 x 425mm
191	11	<b>Cylinder Style Vases</b>
192	9	<b>Rectangular Style Vases</b>
193	1	<b>Qty of (4) Assorted Cushions</b>
194	1	<b>Three Seater Fawn Lounge</b>
195	2	<b>Two Seater Fawn Fabric Lounges</b>
196	1	<b>Timber Framed Mirror</b> 1520 x 250mm

---

LOT NO	QTY	DETAILS
197	1	<b>Timber Entertainment Unit</b> 8 Drawer, Two Cupboards, 2015 x 555 x 800mm, Note: Cupboards Locked, No Key
198	1	<b>Timber Laminate Cabinet</b> with (4) Doors & Shelf, 800 x 415 x 2000mm
199	1	<b>Timber Laminate Cocktail Cabinet</b> with (2) Glass Doors & (3) Timber Doors, 800 x 415 x 2000mm
200	1	<b>Timber Step Up Single Bed</b> with Pull Out Under Shelf
201	1	<b>Timber Queen Bed Frame</b>
202	1	<b>Qty of (8) Assorted Pillows</b>
202.1	1	<b>Bayliss Floor Rug</b> Cream/Blue/Brown, 2280 x 1600mm
203	1	<b>Timber Bedside Table</b> on Castors, with Drawer, Tile Inlay & Under Shelf
204	2	<b>Metal Red Stools</b> 290 x 450mm
205	2	<b>Dell Terra Round Black Metal Stools</b>
206	1	<b>Cane Basket</b> with Lid & Latch
207	1	<b>Wicker Cane Laundry Basket</b>
208	1	<b>Qty of (2) Assorted Bedside Tables</b> incl. (3) Drawer Beside Cabinet & Timber Table with Drawer & Cupboard
209	1	<b>Ping Pong Set</b> incl. (2) Racquets, Net & Ball
210	1	<b>Solid Timber Square Coffee Table</b> 1100 x 1100 x 400mm
211	2	<b>Assorted Timber Bread Boards</b>
212	1	<b>Vintage Style Telephone</b>
213	2	<b>Assorted Timber Bread Boards</b> with Metal Handles
214	1	<b>Blue Homemaker Fan</b> Model HEG20M, 240V
215	1	<b>Homemaker Everyday Sewing Machine</b> Model HMFY900LCD, 240V, with Cover
216	1	<b>See Through Padlock</b> with (2) Keys and Lock Picking Tools

LOT NO	QTY	DETAILS
217	1	<b>Timber Bar Stool</b>
218	1	<b>Timber Entertainment Unit</b> on Castors, (2) Doors & Under Shelf, 1070 x 615 x 770mm
219	1	<b>Mortar &amp; Pestle</b>
220	3	<b>Timber Highback Chairs</b>
221	1	<b>Timber Chair</b>
222	1	<b>Timber Double Bed Frame</b> Note: No Slats
223	1	<b>Timber Cabinet</b> with (3) Cupboards, Shelves, Mirrored Back, with Light, 900 x 430 x 2030mm
224	1	<b>Timber Cabinet</b> with (2) Sets of Glass Doors & Timber Doors, incl. Shelves & Light, 880 x 420 x 2025mm
225	4	<b>Single Bed Ensemble Bases</b> on Castors
226	1	<b>Vintage Style Leather Lockable Case</b> with Key
227	1	<b>Framed Water Painting "Farm"</b> 475 x 410mm
228	1	<b>Qty of (2) Assorted Homeware Items</b> incl. Glass Digital Scales & Wasche Butler Clothes Folder
229	1	<b>Nine Pce Timber Dining Setting</b> incl. Table & (8) Timber High Back Chairs, 1500 x 1500 x 770mm
230	1	<b>Timber Towel Stand</b> with Under Shelf, 400 x 1040mm
231	1	<b>Mont Marte Professional Series Timber Artist Easel</b>
232	1	<b>Qty of Approx. (90) Assorted Kitchenware Items</b> incl. Plates, Bowls, Cups & Mugs
233	1	<b>Five Pce Dining Setting</b> incl. Timber Top Table & (5) Chairs, 1100 x 1100mm
234	1	<b>Timber Laminate 3 Pce Childrens Dining Setting</b> incl. Round Table & (2) Round Stools
235	1	<b>Timber &amp; Metal Trolley</b> on Castors with (2) Shelves, 500 x 330 x 710mm
236	1	<b>Portsea 3 Pce Leather Recliner Lounge</b> incl. (2) Recliner Arm Chairs
237	1	<b>La-Z-Boy 3 Seater PU Leather Lounge</b>

LOT NO	QTY	DETAILS
238	1	<b>Five Pce Timber Dining Setting</b> incl. Timber Table & (4) Highback Dining Chairs, 1500 x 1500 x 770mm
239	2	<b>Plastic &amp; Metal Extendable Jewellery Cases</b> with Handles
240	1	<b>Qty of (2) Artworks "Beach Side"</b> 400 x 300mm & 410 x 410mm
241	1	<b>Timber Hand Carved Painted Bird Figurine</b>
242	1	<b>White Timber Framed Mirror</b> 900 x 595mm
243	1	<b>Timber Framed Mirror</b> 515 x 970mm
244	3	<b>Timber Framed Mirrors</b> 920 x 720mm
245	1	<b>Moderna Karmin Floor Lamp</b> Metal with Red Shade
246	1	<b>Seven Pce Timber Dining Setting</b> with Metal Legs & (6) Chairs, 1960 x 950 x 760mm
247	1	<b>Naomo 3 Pce Recliner Lounge</b> incl. 3 Seater Fabric Lounge & (2) Recliner Arm Chairs
248	1	<b>Three Seater Lounge</b> Red Corduroy Fabric
249	1	<b>Coffee Table</b> Metal Base & Glass Top, 700 x 700 x 500mm
250	14	<b>Packs of (5) Single Mattress Protectors</b>
251	22	<b>Packs of (5) Double Mattress Protectors</b>
252	9	<b>Packs of (5) Single Doonas</b>
253	18	<b>Packs of (5) Double Doonas</b>
254	10	<b>Packs of Assorted Queen &amp; King Sheets</b> Approx. (10) Per Pack
255	17	<b>Packs of Single Doona Covers</b> Approx. (10) Per Pack
256	1	<b>Qty of Assorted Linen</b> incl. (3) Single Doonas, Double Mattress Protector & (2) Single Mattress Protectors
257	1	<b>Qty of Assorted Towels</b> incl. (4) Bath Towels & (5) Bath Mats
258	1	<b>Qty of (28) Assorted Pillow Cases</b>

LOT NO	QTY	DETAILS
259	22	<b>Packs of Assorted Double Doona Covers</b> Approx. (5) Per Pack
260	1	<b>Qty of (18) Assorted Double Sheets</b> incl. (10) Flat Sheets & (8) Fitted Sheets
261	1	<b>Qty of Assorted Lace &amp; Fabric</b>
262	14	<b>Rolls of Polyester Cream Lace</b>
263	6	<b>Boxes of DMC Crochet Cotton</b> 10 Rolls Per Box
264	1	<b>Qty of Assorted Linen</b> incl. (3) Double Doonas & Double Blanket
265	1	<b>Qty of (10) Assorted Sheets</b>
266	8	<b>Packs of Assorted Double Flat Sheets</b> Approx. (10) Per Pack
267	30	<b>Packs of Assorted Sheets</b> Approx. (10) Per Pack
268	27	<b>Packs of Assorted Single Flat Sheets</b> Approx. (10) Per Pack
269	38	<b>Packs of Assorted Pillow Cases</b> Approx. (50) Per Pack
270	2	<b>Orange &amp; Blue Laundry Bags</b>
271	1	<b>18ct Ladies Gold Dress Ring</b> Channel Set Diamonds and Synthetic Emeralds with Valuation
272	1	<b>Billabong Majestique Branded Watch (As New)</b> 100 Mtr Water Resistant, Stainless Steel Case & Band
273	1	<b>Sterling Silver Chain</b> with Silver Pendant
274	1	<b>Diva Branded Watch</b> with Diamantes, Note: Some Diamantes Missing
275	1	<b>Jijia Branded Mens Stainless Steel Watch</b> Water Resistant, in Box
276	2	<b>10ct Yellow Gold Bangles</b>
277		<b>Vacant Lot</b>
278	1	<b>Gold Necklace</b>
279	1	<b>Gold Necklace</b>
280	1	<b>Quartz Watch</b>
281	1	<b>Silver Bangle</b>

---

LOT NO	QTY	DETAILS
282	1	<b>Seiko Branded Stainless Steel Watch</b> Date, Water Resistant, Manual, in Box
283	1	<b>Pearl Necklace</b> with Sterling Silver Clasp
284	1	<b>Zeblaze Branded Smart Android Mens Watch (As New)</b> Alarm, Storm Watch, Date, Instruction Manual, in Box
285	1	<b>Walt Disney Childrens Watch "Tale as Old as Time"</b> with Gold Band
286	1	<b>Silver Ring</b> with Blue Stone
287	1	<b>Gold Chain</b> with Gold Crucifix Pendant, in Box
288	1	<b>9ct Ladies Gold Dress Ring</b> with Diamonds and Single Emerald with Diamond Guarantee
289	1	<b>Fossil Branded Authentic Original 30th Anniversary Quartz Watch</b> with Leather Band
290	1	<b>Gold Ring</b> with (5) Cubic Zirconia
291	1	<b>Gold Plated Sterling Silver Ring</b> with Cubic Zirconia
292		<b>Vacant Lot</b>
293	1	<b>Tissot Branded Titanium Mens Watch</b> Model PR100, Date, 100 Mtr Water Resistant, Swiss Made
294	1	<b>Silver Ring</b> with Diamante
295	1	<b>Cairns Ports Branded 1981-2008 Commemorative Watch</b> with Leather Band, Water Resistant
296	1	<b>Pair of Kazu Pearl Earrings</b> with Gold Pierced Back, RRP: \$400
297	1	<b>Silver &amp; Gold Watch</b>
298	1	<b>Sterling Silver Ring</b> with Cubic Zirconia, in Box
299	1	<b>Pair of 9ct Gold Hoop Earrings</b> in Box, Made in Italy
300	1	<b>Qty of (5) Assorted Bangles</b> incl. (2) Silver & (3) Gold
301	8	<b>Sterling Silver Round Bangles</b>

---



---

LOT NO	QTY	DETAILS
302	1	Pair of Sterling Silver Cultured Pearl Stud Earrings in Box
303	1	Qty of Assorted 9ct Gold Jewellery Items incl. Earring & Necklace, Note: Requires Repair
304	1	Pair of Pewter Earrings
305	1	Qty of Assorted Gold Nuggets & Gold Leaf
306	1	Quartz Gold Ladies Watch with Diamante Face
307	1	9ct Gold Signet Ring with Blue Stone
308	1	Quartz Gold Ladies Watch with Elastic Band
309	1	Elite Branded Quartz Nurses Watch Date, Chain & Clasp
310	1	Sterling Silver Ring
311	1	Samor Branded Sports Watch (As New) 30 Mtr Water Resistant, Dual Time, Manual
312	1	Sterling Silver Knot Ring
313	1	Silver Ring
314	1	Sterling Silver Bangle with Pink Shell Inlay, in Box
315	1	Quartz Branded Watch
316	1	Qty of (7) Assorted Costume Bangles
317	1	Pair of Silver & Turquoise Stud Earrings in Box
318	1	Gold Heart Shaped Pendant
319	1	Gold Ring
320	1	Focus Branded Mens Watch 2ATM, Date, Water Resistant
321	1	Gold Ring
322	1	Ripcurl Branded Ladies Watch 100M Water Resistant, Date
323	6	Sterling Silver Oval Embossed Bangles
324	1	18ct Yellow Gold Heart Shaped Pendant
325	1	Silver Love Lighter

---

LOT NO	QTY	DETAILS
326	1	<b>Qty of (3) Assorted Retro Style Containers</b> incl. Cigarette Case & Trinket Boxes
327	2	<b>Kangaroo Lighters</b>
328	1	<b>Silver Signet Ring</b>
329	1	<b>Qty of (6) Assorted Watches &amp; Parts</b> Note: Require Repair
330	1	<b>Qty of Assorted Costume Jewellery</b> incl. Earrings, Necklaces, Bracelet
330.1	1	<b>Timber Framed Print "Window &amp; Wildflowers"</b> 440 x 580mm
330.2	1	<b>Metal Framed Print "Sailing into the Wharf"</b> 610 x 510mm
331	2	<b>Framed Vespa Scooter Prints</b> incl. New York & Roma, 400 x 300mm
332	1	<b>PNG Timber Hand Carved Shield</b> with Shell Inlay
333	1	<b>Australian Flag</b> 820 x 1650mm
334	1	<b>Timber Indonesian Hand Carved Painted Story Board</b> 1990 x 390mm
335	1	<b>Canvas Print "Tulips"</b> 800 x 800mm
336	1	<b>Gold Timber Framed Mirror</b> 700 x 1000mm
337	1	<b>Timber Framed Queensland State of Origin 2012 Memorabilia</b> 970 x 770mm
338	1	<b>Yamaha Acoustic Guitar</b> Model C40, (2) Picks
339	1	<b>BBC Doctor Who Series "Tardis Safe" (As New)</b> with Key, in Box
340	1	<b>Pressed Copper Artwork "Wagon"</b> 860 x 560mm
341	1	<b>Timber Framed Mirror</b> 325 x 430mm
342	1	<b>Timber Framed Print "Marilyn Monroe"</b> with Replica \$1M Gold Note, 320 x 400mm
343	1	<b>Qty of (2) Timber Hand Carved Tribal Artworks</b> in Timber Frame, 160 x 450mm

LOT NO	QTY	DETAILS
344	1	Set of (15) Royal Australian Mint Anzac Spirit Official 2018 Coin Collection "Final Centenary Commemoration Set" in Foldout Catalogue
345	1	Royal Australian Mint 2016 Collection Anzac to Afghanistan Military Moments 14 Coins in Foldout Catalogue
346	1	Olympus Tough Digital Camera Model TG-310, 14Mp, 3.6 Wide Optical Zoom, 1.5 Mtr Shockproof, 3 Mtr Waterproof, Charger
347	1	Pair of Magno 8x22 Binoculars
348	1	Gold Plated Triplet Jewellers Loupe
349	1	Pair of Glasses Type Watch Repair Magnifier (As New) with LED Light, in Box
350	1	Qty of Assorted Coins incl. Canadian, American, Singapore
351	2	Double Lense Jewellers Loupes 10x18mm
352	1	Pair of Camman 3x28 Binocular Glasses
353	1	Qty of (2) Assorted Pocket Knives incl. Browning & Buck, in Plastic Sleeve
354	2	Swiss Army Pocket Knives
355	1	Qty of (5) Coloured \$2 Coins "2016 Australian Olympic Team" in Sleeve
356	1	Defender Extreme Knife with Sheath
357	1	Royal Australian Mint \$5 Commemorative Anzac 25th Anniversary Coin in Sleeve
358	1	Black Leather Police Belt
359	1	Timber Hand Carved Easel
360	1	Old Town London Glass Wall Clock 570mm Diameter
361	2	Aboriginal Painted Didgeridoos 500mm
362	1	Qty of (10) Australian \$1 Notes in Consecutive Order, in Pouch
363	1	Tribal Decorative Ceremonial Hat
364	1	Renniks Coin Album with Assorted Coins & Collectables

LOT NO	QTY	DETAILS
365	1	<b>Timber Pyramid Shaped Set of Drawers</b> with (4) Drawers, Mother of Pearl Inlay, 400 x 190 x 560mm
366	1	<b>Timber Model Sailing Ship</b>
367	1	<b>Qty of (2) White Glass Vases</b>
368	1	<b>Home &amp; Co Cement Base Lamp</b> Model F001552
369	1	<b>Carramar Lighting Naomi Touch Light</b> 240V
370	1	<b>Timber Jewellery Box</b> with (4) Drawers, Mirror & Ring Compartment
371	1	<b>Metal Glass &amp; Ceramic Hooker Pipe</b>
372	1	<b>Timber Hand Carved Praying Man Figurine</b>
373	1	<b>Vintage Style Glass Kerosene Lamp</b> with Wick
374	1	<b>Hand Carved Timber Figurine "Boy Playing Fiddle"</b>
375	1	<b>Hand Crafted Timber Framed Star Fish Artwork</b> Crafted in Changi Prison, Singapore, 200 x 200mm
376	1	<b>Sun Star 1971 Ford Mustang Sportsroof Diecast Model Car</b> on Stand
377	1	<b>Stone Hand Carved African Bust</b>
378	1	<b>Stone Hand Carved Mother &amp; Daughter Figurine</b>
379	1	<b>Natural Sine Brass Brunton Compass</b> by Stanley of London, in Timber Box
380	1	<b>Qty of (5) Assorted Glass Paper Weights</b> incl. Australia, New Zealand, Sky Rail, etc
381	2	<b>Assorted Belts</b> incl. Louis Vuitton Paris Belt & Western Leather Belt
382	1	<b>Pinart Board (As New)</b>
383	2	<b>Diecast Model Cars</b> incl. Chev Corvette & Chevrolet Chevelle
384	1	<b>Jewellery Box</b> with Ring Shelf
385	1	<b>Noahs Ark Timber Indian Chai Tea Box</b> with Painted Lid Made from Crushed Gems
386	1	<b>Qty of (2) Ceramic Chicken Figurines</b>

LOT NO	QTY	DETAILS
387	1	<b>Jindian Yandou Mater Pipe (As New)</b> Model JD-128, in Box
388	1	<b>Ned Kelly Figurine</b>
389	1	<b>Katy Perry Killer Queen Perfume Pack (As New)</b> incl. Body Lotion, Shower Gel & Eau De Perfume Spray
390	1	<b>Indian Style Timber &amp; Copper Trinket Box</b> with Drawer
391	1	<b>Qty of (2) Timber Hand Carved Figurines</b> incl. Giraffe & Deer
392	1	<b>Silver Velvet Lined Jewellery Box</b>
393	1	<b>Sure Catch DW425 Deep Water Stainless Steel Level Wind System Game Trawling Reel with Braid Line</b>
394	1	<b>Qty of (2) Vintage Style Items</b> incl. Guillotine on Timber Base by W.A. Tyzack & Co Sheffield & Metal Apple Corer
395	1	<b>Vintage Style Adze</b>
396	1	<b>Replica Brass Nautical Port Hole Mirror</b> 280 x 170mm
397	1	<b>Qty of (7) Hand Carved Animals</b> incl. Elephant, Camel, Donkey
398	1	<b>Timber Carved Camel</b> with Inkwell, Made in Palestine
399	2	<b>Leather Belts</b> incl. Knoxin
400	1	<b>Qty of (2) Brass Bells</b>
401	1	<b>Original Barthel Fullmenge Soldering Iron</b> Model 0181
402	1	<b>Set of Prestige Number Plates QLD "FERARY"</b> incl. Slim Size 3, 100 x 372mm, Regular Size 3 134 x 372mm, Silver on Black, in Anodised Frame & Brackets with Accessory Number Plate
403	1	<b>Set of Prestige Number Plates QLD "WOT A QT"</b> incl. Slim Size 3, 100 x 372mm, Regular Size 3 134 x 372mm, Black on Gold, in Anodised Frame & Brackets
404	1	<b>Motorcycle Number Plates QLD "65 OMB"</b> incl. Standard 93 x 84mm, Yellow on Black
405	1	<b>Three Seater PU Leather Chaise Lounge</b> with (1) Electric Recliner Chair & Power Cable
406	1	<b>Timber Laminate Table</b> with Metal Frame, (2) Under Shelves, 1200 x 600 x 755mm

---

LOT NO	QTY	DETAILS
407	1	<b>Timber Laminate Table</b> with Metal Frame, 800 x 300 x 725mm
408	1	<b>Three Pce Fawn Lounge Setting</b> incl. 3 Seater Lounge & (2) Single Chairs with Cushions
409	1	<b>Sealy Posturepedic Queen Ensemble Bed</b>
410	2	<b>Sleepmaker Single Ensemble Beds</b>
411	2	<b>Restorable 3 Seater Balinese Teak Timber Lounges</b> with Leather Cushion & Wicker Inlay Back
412	2	<b>Single Recliner Arm Chairs</b>
413	1	<b>Three Seater Lounge</b> with Foldout Bed
414	6	<b>Anaheim Highback PU Leather Dining Chairs</b> Note: Some Peeling
415	1	<b>White Plastic Chair</b> with Metal Legs
416	3	<b>Gas Lift Stools</b>
417	4	<b>White Plastic Outdoor Chairs</b>
418	1	<b>Chest of Drawers</b> with (4) Drawers, Floral Shell Inlay, 1075 x 506 x 905mm
419	1	<b>Fisher &amp; Paykel Refrigerator Freezer</b> Model E522BAWWWWW812
420	2	<b>Linda Pedestal Fans</b> Model LPF40-WH
421	2	<b>40cm Pedestal Fans</b> Model TESPFW18
422	1	<b>Kambrook Arctic Cooling Advantage Fan</b> Model KFA837, with Remote Control
423	1	<b>Singer 80cm Tower Fan</b> Model SIFT5-32M
424	1	<b>Haier 4Kg Dryer</b> Model HDV40A1
425	1	<b>Rheem Filtered Boiling/Cold Instant Water System</b>
426	1	<b>LG Bar Fridge</b> Model NS30LAEG
427	1	<b>Zip Econoboil</b> Model EB007, 240W, 7.5 Ltr Capacity

---

LOT NO	QTY	DETAILS
428	1	<b>Simpson Eziset 5.5Kg Washing Machine</b> Model SWT5541
429	1	<b>Simpson 8Kg Washing Machine</b> Model SWT8043
430	1	<b>Woodson Cold Buffet Refrigerator</b> Model SP.WCSF25SS
431	1	<b>Westinghouse 320 Ltr Freezer</b> Model WCM3200WA
432	8	<b>LG Solar DOM Microwave/Convention Ovens</b> Model MP-9485SA
433	1	<b>Panasonic Microwave</b> Model NN-ST671S
434	1	<b>LG Intellrowave Microwave</b> Model MS#1942G
435	1	<b>Simpson Eziset 350 Dryer</b> Model 39P350
436	1	<b>Semak Chicken Rotisserie</b> Model M8
437	1	<b>Iceblue Refrigerated Display Cabinet</b> Single Phase, 1160 x 1240 x 750mm
438	3	<b>Cafe Tables</b> Timber Laminate Top with Metal Fold Down Base, 600 x 600 x 740mm
439	1	<b>NEC Microwave Oven</b> Model N924P
440	1	<b>Contempo Stainless Steel 4 Slice Toaster</b>
441	1	<b>Kema Espresso Coffee Maker</b> Model S04
442	9	<b>12 Cup Muffin Tins</b>
443	1	<b>Qty of (2) Assorted Homeware Items</b> incl. Mandolin & Mouli Vegetable Mill
444	1	<b>Qty of (2) Assorted Homeware Items</b> incl. Kambrook Rice Express Rice Cooker & Home & Co Sandwich Maker
445	1	<b>5-Star Chef Air Fryer</b> Model AF-K-801-A-BL
446	1	<b>Timber Bench</b> 2100 x 1130 x 930mm
447	1	<b>Qty of (8) Assorted Plastic Bain Marie Trays</b>



LOT NO	QTY	DETAILS
448	1	<b>Breville Juice Fountain</b> Model JE95MY, with Attachments
449	1	<b>Breville Juicer</b> Model JE90J, with Accessories
450	1	<b>Sheffield Vertical Rotisserie</b> Model PLA1064
451	1	<b>Hobart Commercial Food Processor</b> Model FB41
452	1	<b>Pastorkalt Commercial Refrigerated Cabinet</b> with (3) Shelves & Pull Down Blind, 2580 x 820 x 1580mm
453	2	<b>Food &amp; Drinks Vending Machines</b> Note: Parts Only, 1080 x 790 x 1960mm
454	1	<b>Pastorfrigo Refrigerated Curved Glass Display Cabinet</b> Model AVS-V30, with (3) Doors, Made in Italy, 3050 x 1010 x 1310mm
455	1	<b>Boema 2 Group Coffee Machine</b> Model B08591, 360W, 15Amp, with Attachments
456	1	<b>Leone 2 Group Coffee Machine</b> Model W2600
457	1	<b>Woodson Stainless Steel Counter Top Bain Marie</b> Serial No.: 12223CATE24P, Single Phase, 240V, 1350 x 680 x 610mm
458	1	<b>Woodson Stainless Steel Counter Top Bain Maire</b> Model WHFS24, Single Phase, 240V, 1350 x 720 x 600mm
459	3	<b>Espresso Essential Automatic Coffee Machines</b> incl. Cabinets to Suit 900 x 410mm, Note: Only 2 Keys
460	1	<b>Qty of Assorted Homeware Items</b> incl. Glasses, Jars & Cooking Utensils
461	1	<b>Stainless Steel L Shaped Benchtop</b> with Sink & Stainless Steel Splash Back, Under Shelf Fridge Compartment, incl. Brackets, 2180 x 2100mm
462	1	<b>Suzumo Sushi Machine</b> Model SSG-GTA
463	1	<b>Suzumo Robot Sushi Machine</b> Model SVR-NNY
464	78	<b>Accent White Square Dinner Plates</b>
465	1	<b>Qty of (3) Assorted Homeware Items</b> incl. Electric Frypan, Home Maker Sandwich Maker, Knife Block Set
466	3	<b>Timber Trestle Tables</b> 1800 x 940 x 800mm

LOT NO	QTY	DETAILS
467	1	<b>Qty of (2) Assorted Homeware Items</b> incl. Stainless Steel Jug & Elta Slow Cooker
468	1	<b>Stainless Steel Bench Top Bar Cork Extractor</b>
469	1	<b>Qty of (5) Assorted Kitchen Knives</b> in Red Metal Knife Block
470	1	<b>Home &amp; Co Blender (As New)</b> Model BL3320
471	1	<b>Telebrands Slice O Matic</b>
472	1	<b>Set of Scales</b> 5kg Capacity
473	1	<b>Qty of (5) Assorted 10 Ltr Bottles of Cleaning Supplies</b> incl. Floor Finish & Stripper
474	2	<b>Oates Oval Pedal Rubbish Bins</b> 20 Ltr
474.1	1	<b>Mop &amp; Bucket</b>
475	1	<b>Hobart Ecomax 500 Commercial Dishwasher</b> Model ECOMAX500915561, 570 x 610 x 820mm
476	1	<b>Blue Seal Gas 2 Burner Flat Top Grill</b>
477	1	<b>Meiko Compact Auto Rack Stainless Steel Dishwasher</b> Model K200P, 90 Degrees Angle Dryer, Insulated Hood, Electronic Control System
478	1	<b>Icematic Ice Machine</b> Model N202M, with Ice Storage Container
479	1	<b>Unimac Commercial Washing Machine</b> 18.8 Amps, Model UXU100PNHCU1E01
480	3	<b>Outdoor Metal Framed Chairs</b> with Fabric Seat & Back
481	47	<b>White Metal Cafe Chairs</b> with Metal Base & Slat Metal Back
482	1	<b>Electrolux Commercial Convection Ovens</b> Model FCE102, on Castors, 890 x 1220 x 1640mm
483	2	<b>Zanussi Commercial Convection Ovens</b> Stainless Steel, 3 Phase, on Castors, 880 x 1210 x 1620mm
484	1	<b>Qty of (2) Disney Pixar Childs Patio Sets</b> incl. (2) Fold Out Chairs, Table & Umbrella
485	1	<b>Lifespan Kids Value Seesaw (As New)</b> 1.71 Mtrs, in Box
486	2	<b>Actionsports 13Ft Trampoline Enclosures</b> Model S000431N

LOT NO	QTY	DETAILS
487	3	10 Ltr Plastic Water Pourers
488	1	Anko Inflatable Hotdog Float 1850 x 1070mm
489	1	Rod & Reel Combo incl. Shakespeare Encore Reel on Contender Rod
490	1	Alvey Superior Surf Reel Model 500B, Made in Australia, with Braid Line
491	1	Halogen Lamp 140mm
492	1	Spotlight
493	1	Dorcy Battery Powered Lantern
494	1	Black Motorcycle Helmet Size M
495	1	Pair of Redback Flippers Size L
496	1	Impact Sport Shooting Earmuffs
497	2	Rosebank Out to Play Skateboard/Scooter Helmets Size XS
498	1	Prince Vendetta Lite Comp Series Tennis Racquet with Cover
499	4	Fountain Multipurpose Shell for Sand Pit, Wading Pool, etc
500	1	Tarpaulin 6660 x 5620mm
501	1	Set of Tecno Pro Carve 8.5 Snow Skis with Gripon Ski Poles
502	2	Happy Hop Air Flow Play & Splash Centres (As New) with Water Slide & Pool Area, 3500 x 2800mm, with Air Blower
503	2	Action Sports Free Unit Swing Sets Model S001332
504	3	Action Sports Freestanding Metal Slides Model S001277V
505	2	Fisher-Price 2 in 1 Slide to Rocker
506	1	Plum Giant Timber Sand Pit (As New) In Box, 1.77 x 1.77 x 0.23 Mtrs
507	1	Hinterland 4 Person Folding Tent 2.4 x 2.1 x 1.6 Mtrs

LOT NO	QTY	DETAILS
508	1	<b>HID Spot Light</b> 230mm
509	1	<b>Piping Hot Australia Childrens Life Jacket</b>
510	3	<b>Active &amp; Co 9 Ltr Eskies</b>
511	1	<b>Qty of (2) Assorted Scuba Diving Items</b> incl. Scubapro R190 Regulator & (3) Diving Weights with Belt
512	1	<b>Pair of Tusa Solla Fins (As New)</b> Model SF-22, Size XS-S
513	1	<b>Push Golf Buggy</b>
514	1	<b>Dog Pacer Treadmill</b> with Power & Safety Cable
515	1	<b>Ab Doer Twist (As New)</b> incl. Resistance Band & Handles, DVD, Motivational Calendar, Manual
516	1	<b>Jackeroo 3 Burner Gas Cooker (As New)</b>
517	1	<b>Hinterland Portable Kettle BBQ (As New)</b>
518	1	<b>Outdoor Connection Foldout Camp Bed</b>
519	1	<b>Zero Driver 2 Pro HP Tyre Pump</b>
520	1	<b>22 Ltr Plastic Jerry Can</b> with Superworks Funnel
521	1	<b>Ammunition Component Box MK2</b> 375 x 290 x 360mm
522	1	<b>Qty of (2) Tarpaulins</b> 1600 x 1700mm & 3400 x 3400mm
522.1	1	<b>Self Inflatable Camping Mattress</b>
523	5	<b>Disney Pixa Monsters University Childs Patio Sets</b> incl. (2) Fold Out Chairs, Table & Umbrella
524	1	<b>Qty of Assorted Dumbbells</b> incl. (4) 2.3Kg Weights & (2) 1.5Kg Dumbbells
525	1	<b>Cat Play House</b>
526	1	<b>Razor E300 Electric Scooter</b> 24V, 250W, Charger
527	1	<b>Jumbuck 4 Burner BBQ</b> incl. 8.5kg Swap & Go Gas Bottle
528	1	<b>Esky</b> on Stand with Wheels, 780 x 380 x 820mm

---

LOT NO	QTY	DETAILS
529	1	<b>Icey-Tek Esky</b> Model 120D, 120 Ltr
530	1	<b>Willow 25 Ltr Esky (As New)</b>
531	1	<b>Grillworks Company Spit Roaster</b> incl. Instruction Manual, 600 x 630mm
532	1	<b>Qty of (4) Electronic Mosquito Traps</b>
533	1	<b>Army Style Hiking Backpack</b>
534	1	<b>Hand Basin</b> 480 x 240 x 150mm
535	3	<b>White Ceramic Hand Basin</b> 610 x 465 x 135mm
536	1	<b>Mondella 620mm Chrome Rococo Single Towel Rail (As New)</b> in Box
537	3	<b>White Ceramic Hand Basin</b> 810 x 465 x 135mm
538	1	<b>Hand Basin</b> with Taps, 1210 x 470mm
539	1	<b>Stylus Indoor Spa Baths</b> incl. Onga Pumps
540	1	<b>4 Person Spa Pool</b> Waterco Heater Pump, 1.25Hp Spa Quip Supercharge Pump, 1950 x 1060 x 690mm
541	1	<b>Left Side Kitchen Sink</b> with Drain Attachment & Mounting Brackets, 720 x 480mm
542	2	<b>Right Side Kitchen Sinks</b> 760 x 480mm
543	1	<b>Left Hand Stainless Steel Double Sink</b> 1385 x 470mm
544	3	<b>Stainless Steel Laundry Tubs</b> 580 x 470 x 140mm
545	1	<b>Caroma Hand Basin</b> 570 x 470mm
546	11	<b>Toilet Cisterns</b> with Assorted Parts
547	8	<b>Bathroom Side Cabinets</b> with (2) Cupboards, Soft Close, 2 Pac, 380 x 320 x 1300mm
548	19	<b>Assorted Toilet Bowls</b>

---

---

LOT NO	QTY	DETAILS
549	1	<b>Caroma Toilet</b> with Top Cistern
550	4	<b>MBI Bath Tubs</b> 1675 x 735 x 420mm
551	8	<b>High Bay Lights</b>
552	1	<b>Pierlite High Bay Light</b> Model HL400MVCG
553	1	<b>Kincrome Checker Plate Tool Box</b> on Castors, Note: No Key, 1450 x 520 x 580mm
554	1	<b>Starkeys Silent Knight Electric Insect Trap</b> Model SK961
555	37	<b>Air Conditioner Wall Mounted Ceiling Type Fan Coil Units Water Cooled</b> Model FP-68
556	1	<b>JB Ballast HPS1000</b> Wattage Control Unit for Hydroponic Lamps
557	1	<b>Qty of (3) Air Vents</b> incl. (1) Frame, 710 x 325 x 370mm
558	3	<b>Vinidex Drain Coil Sub-Soil Drainage Pipes</b> 65mm x 20 Mtrs
559	1	<b>Ironing Board</b> with Stand
560	1	<b>Rheem 35 Ltr Outdoor Gas Hot Water Cylinder</b>
561	1	<b>Dux Forte 125 Ltr Hot Water Cylinder</b> Model 125F1-24
562	4	<b>24" Rims</b> with Assorted Tyres, Lexani, Winrun & Sunny
563	6	<b>Boxes of Eco Lab Hygiene Aircare Mystique Air Freshener</b> (12) 74g Spray Cans Per Box
564	15	<b>500ml Bottles of Ecolab Spirigel Antiseptic Alcohol Gel</b>
565	1	<b>Qty of (12) 300g Raid Commercial Insecticide Spray Cans</b>
566	3	<b>Boxes of (10) 475ml Tor Premium Toilet Seat Cleaner</b> to Suit S2 System
567	19	<b>350ml Dispenser Bottles of Ecolab Hand Soap</b>
568	24	<b>250ml Packs of Eco Lab Mantle Barrier Cream</b> for Dispenser
569	1	<b>5Kg Tub of Goldstein Vision Active Cleaner</b>
570	1	<b>Qty of Assorted Length of Chain</b>

---

---

LOT NO	QTY	DETAILS
571	1	<b>Davey Sump Pump</b> Model D40A-2
572	1	<b>Qty of Assorted Hardware Items</b> incl. Galvanised Barbed Staples, Timber Screws, Wellmate Splits & Grips
573	1	<b>Hi Vis Lufkin Metric Measuring Wheel</b>
574	1	<b>Ecolab Geosystem 900 Solid Fusion Industrial Liquid Dispenser (As New)</b> with Accessories, Manual, in Box
575	2	<b>Vintage Style Rebate Planes</b>
576	1	<b>Qty of (4) Assorted Hardware Items</b> incl. Schlage Door Handle, Passage Set, Cavity Door Lock Set & Filter Cover
577	1	<b>Qty of (9) Plastic WHS Signs</b> incl. Danger Confined Space, Prepare to Stop & Drive Safely, Assorted Sizes
578	1	<b>Qty of Assorted Hardware Items</b> incl. Tile Cutter, Axe, Level, etc, Box Contents
579	250	<b>Assorted Plastic Bins</b>
580	1	<b>Standard Insulation Continuity Meter</b> Model 1832IN, Carry Case & Cables
581	1	<b>24V Alternator</b>
582	1	<b>Black Metal Lockable Letterbox</b> with Keys, 260 x 90 x 310mm
583	36	<b>Pairs of Frontier Rubber Gloves</b> Size L
584	1	<b>Qty of Assorted Hardware Items</b> incl. Saws, Hammers, Spanners, Cargo Net, Towbar & Steering Wheel Lock in Box
585	2	<b>Sash Clamps</b>
586	1	<b>Straight Crowbar &amp; Scrapping Tool</b>
587	1	<b>Bailey Foldout 2200mm Ladder</b>
588	1	<b>Qty of (2) Hardware Items</b> incl. Sledge Hammer, Pick Axe & Spare Handle
589		<b>Vacant Lot</b>
590	3	<b>Aluminium Utility Drop Side Trays</b> 1800 x 250mm
591	1	<b>Qty of (2) Assorted PVC Drains</b> 255 x 765mm & 255 x 685mm
592	1	<b>Pipe Clamp</b> Approx. 320-360mm

---



---

LOT NO	QTY	DETAILS
593	1	<b>Pipe Clamp</b> Approx. 220-250mm
594	1	<b>Ecolab Geosystem 900 Solid Fusion Industrial Liquid Dispenser</b>
595	3	<b>Irrigation Pipe Couplings</b> 350mm Diameter
596	1	<b>AVK Pipe Coupling</b> 300mm Diameter
597	2	<b>Viking Johnson Irrigation Pipe Couplings</b> incl. O.D. Range 315-349mm
598	4	<b>Iwaki Metering Pumps</b> Model EWN-B16VCARA, 100-240V, 0.7Mpa, Air Vents
599	1	<b>Qty of Assorted Hardware Items</b> incl. Roof Screws & Nails, Box Contents
600	10	<b>Reflex Assorted Pressure &amp; Temp Relief Valves</b> incl. RPTR1400, RPTR850 & RPTR1000
601	1	<b>Onga Spa Pump</b> Model 2381-1, with Heater, Installation Manual
602	1	<b>Tile Cutter</b>
603	1	<b>Toolsmith Carpenters Tool Belt</b>
604	1	<b>Ozito Air Random Orbital Pneumatic Sander</b> Model ASR-150
605	1	<b>Air Drill</b>
606	1	<b>Stanley Drill Bit</b> with Hand Brace
607	1	<b>Dorma Pneumatic Door Closer</b> Model TS68EN2-4BC, in Box
608	1	<b>Qty of Assorted Hardware Items</b> in Bag, incl. Screwdriver, Spanners, etc
609	1	<b>Timber Handles Hatchet</b> incl. 200mm Bench Oil Stone
610	1	<b>Ark Submersible Trailer Lamp (As New)</b> in Box
611	1	<b>Straight Line Stud Finder &amp; Laser Level</b> in Case
612	1	<b>Stanley Plane Combo</b> Model 13-052, with (10) Blades
613	1	<b>Eslon 100 Mtr Tape</b>

---

LOT NO	QTY	DETAILS
614	1	<b>Red Metal Toolbox</b> with Assorted Tools, incl. Spanners, Screwdrivers, etc
615	1	<b>24V Battery Charger</b> Model 4C24080A
616	1	<b>Makita Portable Work Radio</b> Model DMR102, 18V
617	1	<b>Qty of (3) Assorted Trade Tools</b> incl. Reciprocating Saw, Rechargeable Light and Cordless Drill
618	1	<b>Qty of (2) Assorted Hilti Power Tools</b> incl. Cordless Drywall Drill with (2) Batteries & Charger & Magazine, Assorted Drill Bits, in Carry Case
619	1	<b>Hilti Manual Dispenser</b> in Carry Case
620	2	<b>Hilti Manual Dispensers</b> Model MD2000 & MD2500, in Carry Case
621	1	<b>Hilti Cordless Drill</b> Model SF4000-8, (2) Batteries & Carry Case
622	1	<b>Hilti Electric Hammer Drill</b> Model TE15-C, in Carry Case
623	1	<b>Hilti Rotary Hammer</b> Model TE7-C
624	1	<b>Macsolar Inverter</b> Model MCS2-TL2K
625	1	<b>Ryobi Electric Screwgun</b> Model ESD600K, in Carry Case
626	1	<b>Paslode Impulse Utility Framing Nailer</b> with Battery, in Case, Note: No Charger
627	1	<b>SCA Turbine 240V Air Compressor (As New)</b> in Box
628	1	<b>Qty of DeWalt Power Tools</b> incl. Powered Screwdriver, Cordless Jigsaw, Cordless, Circular Saw & Rechargeable Light, Heavy Duty, Plastic Carry Case, Note: No Batteries
629	2	<b>Aluminium Security Screen Doors</b> Note: No Keys, 795 x 2010mm
630	1	<b>Black Metal Roll Bars</b> with Seat Belts
631	1	<b>Set of Aluminium Wall Grates</b> with Brackets
632	1	<b>Crown Battery Powered Hand Operated Fork Lift</b> Model TOMTA, Serial No.: B836292, Max Lift 2.3M, Note: No Batteries

LOT NO	QTY	DETAILS
633	1	Hytsu 2500Kg Pallet Jack
634	1	2500kg Pallet Jack
635	3	SCA Powder Coated Shelf Units 5 Tier, 150Kg
636	1	Qty of (2) Rolls of Fortex Shrink Film incl. Full 800 Mtr Roll & Quarter Roll with Dispenser
637	1	Ozito Electric Mower Model ELM-1000, with Catcher
638	1	Automatic 4 Stroke Lawn Mower Model A16SC, 118cc, Self Priming
639	1	Masport Utility 460 Mower Powered by Briggs & Stratton Motor, Note: Tagged Out
640	1	Qty of (3) Assorted Outboard Motors incl. (2) Chrysler 45Hp & 6Hp Outboard Motors & Johnson 9Hp Outboard Motor
641	1	18Hp Vanguard Generator Model 350447, 9Kva, Single Phase, Petrol
642	1	Aluminium Checker Plate Undertray Tool Box Lockable, Note: No Key, 580 x 400 x 250mm
643	1	Bosch Aquatak 100+ Gerni with Attachments
644	1	Yard Machines Brush Cutter Model LT31CS, Straight Shaft with Steel Blade,
645	1	Shindaiwa Straight Shaft Line Trimmer Model T260X, Note: Tagged Out
646	2	Stihl FS450 Whipper Snippers
647		Vacant Lot
648	4	Qtys of Assorted Hardware Items incl. Shovel, Broom & Rake
649	1	Whacker Jack Hammer Model BH24, Note: Requires Repair
650	1	Edco Concrete Planer Model CPM8-GLP, 200mm, 8", Petrol, 9Hp
651	1	Rover Muncher Model 97365, 1500W Heavy Duty Motor, 240V, 6.4Amp, on Trolley
652	1	BOC Industrial Mig Welder 190c
653	1	Powamac 250Amp Welder on Fabricated Trolley

---

LOT NO	QTY	DETAILS
654	1	<b>Mikasa Tamping Rammer</b> Model MTX-70, Powered by Honda GX 100Hp Motor, Note: Tagged Out
655	1	<b>Straight Crowbar</b>
656	1	<b>Skilsaw Electric Circular Saw</b> with 8 1/4" Blade
657	1	<b>Qty of (2) Jacks</b> incl. Nissan
658	1	<b>4.5kg Quell Fire Extinguisher</b>
659	1	<b>Qty of Assorted Hardware Items</b> incl. General Purpose Cement, Quick Wall Render, Lyndons RFA Water Based Concrete Curing Membrane,
660	2	<b>Echo Power Blower</b> Model PB-2155
661	1	<b>Makita Concrete Saw</b> Model DPC7331, Note: No Blade, Tagged Out
662	1	<b>Durst Superior Electric Bench Grinder</b> Model 30220, Wire Brush & Polishing Wheel
663	1	<b>Electric Bench Grinder</b> with Brush & Sander Attachment
664	1	<b>Honda Inverter Generator</b> Model EU 26i
665	2	<b>Generators</b> Approx. 2kVA, (2) 240V Outlets & DC 12V Outlet
666	1	<b>Honda EU Inverter 20i Generator</b>
667	1	<b>Honda EU Inverter 20i Generator</b>
668	1	<b>Generator</b> Approx. 2kVA with (2) 230V Outlets & DC 12V Outlet
669	1	<b>Qty of Assorted Hardware Items</b> incl. Hammers, Spanners, Sockets, etc
670	1	<b>Performance Garden Products Electric Blower/Vac</b> with Extension Cable, Note: No Vacuum Bag
671	1	<b>GMC Electric Vac/Blower</b> with Bag
672	1	<b>20 Ltr Container of Stihl Synth Plus Chainsaw Oil</b> Note: Opened
673	1	<b>Petrol Generator</b> Powered by Briggs & Stratton 6Hp Motor, Model 117432

---

---

LOT NO	QTY	DETAILS
674	1	<b>Petrol Generator</b> Powered by Honda GX340 Motor, with (2) Power Outlets
675	1	<b>Qty of Assorted High Tensile Nuts &amp; Bolts</b> 87 x 14mm & 37 x 14mm
676	1	<b>Qty of Assorted High Tensile Nuts &amp; Bolts</b> 150 x 8mm, Bucket Contents
677	1	<b>Saxon 48L Multipurpose Cart</b>
678	1	<b>Qty of (8) Assorted Garden Tools</b> incl. Hedge Clippers & Scythe
679	1	<b>Qty of (9) Assorted Saws</b>
680	1	<b>Bostitch M111FS Secret Flooring Staple Gun</b> 38-50mm
681	1	<b>Ramset Fastening Tool</b> Model JP88, in Orange Metal Case, Explosive Charge, Instruction Manual
682	1	<b>2.2M Platform Ladder</b>
683	1	<b>Homelite Mighty Lite 2 Stroke Petrol Blower</b> Model HBL26BVN
684	1	<b>Homelite Mighty Lite 2 Stroke Blower</b> Model HBL26YBNB
685	1	<b>Stihl HS45 Hedge Trimmer</b> Note: Requires Tuning & New Plug
686	2	<b>Stihl HS45 Hedge Trimmer</b>
687	2	<b>Yellow Air Compressor Hoses</b> with Opitma PP1500 Claw Coupling
688	1	<b>Echo Chainsaw</b> Model CS-420ES, Spare Blade & (8) Spare Chains
689	1	<b>Poulan Chain Saw</b> 2050 2.0 C.I.
690	1	<b>Stihl Chainsaw</b> Model MS250, Spare Chain
691	3	<b>Echo Chainsaws</b> Model CS-310ES, Spare Chains

END OF SALE

LOT NO	QTY	DETAILS
--------	-----	---------

## SPECIAL LOT 692 TO 812 WILL BE OFFERED AT 12 NOON

692	1	<p><b>CP 2007 Yamaha FZ1 1000cc Motorcycle</b>            Silver, Manual, 4 Cylinder, Petrol            Engine No.: N513E038634            VIN: JYARN16748A000362            Indicating: 20,000 Kms            Vehicle is sold without a statutory warranty, is not subject to a cooling off period and is sold unregistered and without a rwc            BUYERS PREMIUM: 10%</p>
693	1	<p><b>CP 2010 Ford Ranger Dual Cab Utility</b>            Blue, Manual, 4 Cylinder, Diesel, Nudge Bar, Ladder Racks, Side Steps, Tow Bar, Tray Cover            Engine No.: WEAT1152336            VIN: MNAUSFE90AW903003            Indicating: 169,071 Kms            Vehicle is sold without a statutory warranty, is not subject to a cooling off period and is sold unregistered and without a rwc            BUYERS PREMIUM: 10%</p>
694	1	<p><b>CP 2010 Toyota Landcruiser 200 Series Wagon</b>            Silver, Automatic, 8 Cylinder, Diesel            Engine No.: 1VD0080242            VIN: JTMHV095205007437            Indicating: 320,095 Kms            Vehicle is sold without a statutory warranty, is not subject to a cooling off period and is sold unregistered and without a rwc            BUYERS PREMIUM: 10%</p>
695	1	<p><b>CP 2008 Ford Falcon Utility</b>            Grey, Automatic, 6 Cylinder, Petrol            Engine No.: JGCM6Y28558            VIN: 6FPAAAJGCM8Y28558            Indicating: 399,174 Kms            Vehicle is sold without a statutory warranty, is not subject to a cooling off period and is sold unregistered and without a rwc            BUYERS PREMIUM: 10%</p>
696	1	<p><b>CP 2011 Mitsubishi Triton Utility</b>            White, Manual, 4 Cylinder, Petrol, Aluminium Tray with Lockable Canopy/Cage, Nudge Bar, Ladder Rack            Engine No.: 4G64UCAL6898            VIN: MMAENKA50CD002400            Indicating: 162,256 Kms            Vehicle is sold without a statutory warranty, is not subject to a cooling off period and is sold unregistered and without a rwc            BUYERS PREMIUM: 10%</p>
697	1	<p><b>CP 2006 Ford Courier Utility</b>            Silver, Automatic, 4 Cylinder, Petrol            Engine No.: 16V000780            VIN: AFAEXXMJ2E6Y00150            Indicating: 5,901 Kms            Vehicle is sold without a statutory warranty, is not subject to a cooling off period and is sold unregistered and without a rwc            BUYERS PREMIUM: 10%</p>

LOT NO	QTY	DETAILS
698	1	<p><b>CP 1997 BMW Z3 Roadster Coupe</b>            Blue, Automatic, 4 Cylinder, Petrol            Engine No.: 003286W919451            VIN: WBACH72080LB04410            Indicating: 155,201 Kms            Vehicle is sold without a statutory warranty, is not subject to a cooling off period and is sold unregistered and without a rwc            BUYERS PREMIUM: 10%</p>
699	1	<p><b>CP 2006 Isuzu NKR200 Tipper Truck</b>            White, Manual, 4 Cylinder, Diesel            Engine No.: 4JH1345444            VIN: JAANKR77E57100199            Indicating: 147,943 Kms            Truck is sold without a statutory warranty, is not subject to a cooling off period and is sold unregistered and without a rwc            BUYERS PREMIUM: 11%</p>
700	1	<p><b>CP 2006 Toyota Hilux 4x2 Workmate Utility</b>            Silver, Manual, 4 Cylinder, Petrol            Note: No Key            Engine No.: 2TR6260308            VIN: MROCX12G700014097            Indicating: Unknown Kms            Vehicle is sold without a statutory warranty, is not subject to a cooling off period and is sold unregistered and without a rwc            BUYERS PREMIUM: 10%</p>
701	1	<p><b>CP 2002 Nissan Navara D22 DX V6 Dual Cab Utility</b>            Red, Automatic, 6 Cylinder, Petrol            Note: No Key            Engine No.: VG30264535Y            VIN: JN1CFGD22A0020153            Indicating: Unknown Kms            Vehicle is sold without a statutory warranty, is not subject to a cooling off period and is sold unregistered and without a rwc            BUYERS PREMIUM: 10%</p>
702	1	<p><b>CP 2004 Toyota Camry 36 Series Altise Sedan</b>            Blue, Automatic, 4 Cylinder, Petrol            Note: No Keys            Engine No.: 2AZA195699            VIN: 6T153BK360X065118            Indicating: Unknown Kms            Vehicle is sold without a statutory warranty, is not subject to a cooling off period and is sold unregistered and without a rwc            BUYERS PREMIUM: 10%</p>
703	1	<p><b>CP 2011 Hyundai I-30 Hatch</b>            Blue, Manual, 4 Cylinder, Petrol            Engine No.: G4FCBU337020            VIN: KMHDB51DLCU364395            Indicating: 145,776 Kms            Vehicle is sold without a statutory warranty, is not subject to a cooling off period and is sold unregistered and without a rwc            BUYERS PREMIUM: 10%</p>

LOT NO	QTY	DETAILS
704	1	<p><b>CP 2006 Ford Fiesta Hatch</b>            Red, Automatic, 4 Cylinder, Petrol            Engine No.: 6Y71355            VIN: WF0HXXGAJH6Y71355            Indicating: 198,073 Kms            Vehicle is sold without a statutory warranty, is not subject to a cooling off period and is sold unregistered and without a rwc            BUYERS PREMIUM: 10%</p>
705	1	<p><b>CP 2006 Hyundai Getz 3DR XL Hatch</b>            Silver, Manual, 4 Cylinder, Petrol            Note: No Key            Engine No.: G4ED6471458            VIN: KMHBT31BR6U149177            Indicating: Unknown Kms            Vehicle is sold without a statutory warranty, is not subject to a cooling off period and is sold unregistered and without a rwc            BUYERS PREMIUM: 10%</p>
706	1	<p><b>CP 2010 Holden Commodore Sedan</b>            Yellow, Manual, 6 Cylinder, Petrol            Engine No.: LLT103140364            VIN: 6G1EK5EV8BL516816            Indicating: 138,604 Kms            Vehicle is sold without a statutory warranty, is not subject to a cooling off period and is sold unregistered and without a rwc            BUYERS PREMIUM: 10%</p>
707	1	<p><b>CP 2013 Foton 85Hp 4WD Loader Tractor</b>            Red, Manual, 4 Cylinder, Diesel, incl. Quickshift Quickshift Forward &amp; Reverse 12 Forward 4 Reverse Gears, Difflock Creeper Gear 2 Speed PTO, 2 Hydraulic Remotes, 4 in 1 Self Levelling Loader Bucket            Engine No.: HC513856YN08            VIN: FTTC5A74CDM000267            Indicating: 313.6 Hrs            Tractor is sold without a statutory warranty, is not subject to a cooling off period and is sold unregistered and without a rwc            BUYERS PREMIUM: 11%</p>
708	1	<p><b>Mobile Liquid Rubber Membrane Pumping Enclosed Tandem Axle Trailer</b>            incl. Liquid Rubber HVLP 2000 Membrane Pump with (2) Comet Pumps (MP30, MP20) Delivery Hose and Twin Nozzle, Mounted on Fabricated Steel Frame, Powered by 5.5Hp Honda 4 Stroke Petrol Engine            Chassis No.: OP1339            Note: No Vin Number Plate            Trailer is sold without a statutory warranty, is not subject to a cooling off period and is sold unregistered and without a rwc</p>
709	1	<p><b>CP 2007 Trailers 2000 Box Trailer</b>            Diamond T Aluminium Tool Box, Spare Wheel, Timber Dividers, Jockey Wheel            VIN: 6TCBXT1T27M021083            Trailer is sold without a statutory warranty, is not subject to a cooling off period and is sold unregistered and without a rwc</p>
710	1	<p><b>Field Chief 3 Point Linkage Trash Rake</b>            1450mm Wide</p>



LOT NO	QTY	DETAILS
711	1	<b>Field Chief 3 Point Linkage 6' Tractor Slasher</b> with Galvanised Deck
712	1	<b>6 Mtr Portable Ablution Block</b> incl. 4 Toilets & 2 Showers
713	1	<b>CP John Deere 1565 4WD 72" Front Deck Mower</b> Green, Automatic, 3 Cylinder, Diesel Engine No.: 152588 VIN: ITC1565DKBT100 Indicating: 2,118.2 Hrs BUYERS PREMIUM: 11%
714	1	<b>New Holland G6030 4WD Front Deck Mower</b> Powered by Diesel Engine, with Sprayer Attachment Serial No.: YCWJE0005 Engine No.: N843142652 Indicating: 2,307.8 Hrs BUYERS PREMIUM: 11%
715	1	<b>Club Cadet Zero Turn Lawn Mower</b> Yellow, Automatic, 2 Cylinder, Petrol Engine No.: FH721VB41000 Chassis No.: FH721VB41000 Indicating: 825 Hrs
716	1	<b>Jacobsen Greens King IV Ride On Greens Mower</b> Powered by Diesel Engine Serial No.: 622294321 Indicating: 2,952.9 Hrs
717	1	<b>2011 Polaris Sportsman 400 4x4 Quad Bike</b> VIN: 4XAMH4SA2CA355775 Indicating: 383.6 Kms Quad is sold without a statutory warranty, is not subject to a cooling off period and is sold unregistered and without a rwc BUYERS PREMIUM: 11%
718	1	<b>CP 2005 Polaris Ranger Utility</b> Green, Automatic, Petrol Engine No.: Unidentifiable VIN: 4XARD50A16D750680 Indicating: 804 Hrs Utility is sold without a statutory warranty, is not subject to a cooling off period and is sold unregistered and without a rwc BUYERS PREMIUM: 11%
719	1	<b>Poly Portable Toilet</b> Serial No. EE16923, 2400 x 1100 x 1120mm
720	1	<b>Pickers Lot Container Contents Only (In Situ)</b> incl. Chains Saws, Quad Bike, Bicycles, Clothing, Bed Ensemble, Refrigerator, Household Goods, Sporting & Fishing Equipment, Garden Tools etc. Condition of Sale requires that the container is to be left empty upon collection.

LOT NO	QTY	DETAILS
721	1	<p><b>CP 2004 Kia Rio Sedan (Sold In Situ)</b>            Location: Hopevale Police Station            Black, Manual, 4 Cylinder, Petrol            Engine No.: A5D360880            VIN: KNADC223246350500            Indicating: 195,090 Kms            Vehicle is sold without a statutory warranty, is not subject to a cooling off period and is sold unregistered and without a rwc            BUYERS PREMIUM: 10%</p>
722	1	<p><b>CP 1995 Jeep Cherokee Wagon (Sold In Situ)</b>            Location: Coen Police Station            White, Automatic, 6 Cylinder, Petrol            Engine No.: SL512789408MX19            VIN: 1J4FJB8S3SL512789            Indicating: 360,659 Kms            Vehicle is sold without a statutory warranty, is not subject to a cooling off period and is sold unregistered and without a rwc            BUYERS PREMIUM: 10%</p>
723	1	<p><b>CP 2017 Aurora 3.8 Mtr Inflatable Boat</b>            Note: No Engine            HIN: CNAURO8939F111            Boat is sold without a statutory warranty is not subject to a cooling off period and is sold unregistered and without a rwc</p>
724	1	<p><b>CP 2006 Aquapro DMOR 4.2 Mtr Inflatable Boat</b>            40Hp Yamaha 4 Stroke O/B Motor            Engine No.: 67CL1021968            HIN: NZ-XVII794F606            Boat is sold without a statutory warranty is not subject to a cooling off period and is sold unregistered and without a rwc</p>
725	1	<p><b>CP 2008 Ally Craft 3.75 Mtr V Nose Punt</b>            on Dunbier Boat Trailer, 15Hp Yamaha 2 Stroke O/B Motor            Engine No.: 684KS1070910            HIN: AUJALY20760J805            Trailer VIN: 6FJDDD33382243738            Boat is sold without a statutory warranty is not subject to a cooling off period and is sold unregistered and without a rwc</p>
726	1	<p><b>CP 2013 Gemini 505 Waverider Rigid Lightweight Boat</b>            on Sales Boat Trailer, 2012 70Hp Yamaha 68kw O/B Motor            Engine No.: 6CJL1017868            Indicating: 88 Hrs            HIN: AUJWWA176874FD2            VIN: 6J8SALEBTDM000151            Boat &amp; Trailer are sold without a statutory warranty are not subject to a cooling off period and are sold unregistered and without a rwc            BUYERS PREMIUM: 11%</p>
727	4	<p><b>Atco Internal Office Dongas</b>            Skid Mounted, Split Air Conditioner, Single Room &amp; Common Room, 12 x 3 Mtrs, Category 3            BUYERS PREMIUM: 11%</p>
728	1	<p><b>Qty of Assorted Hardware Items</b>            incl. PVC Pipes &amp; Con-Form Boards</p>

LOT NO	QTY	DETAILS
729	1	<b>Qty of Assorted Aluminium &amp; Metal</b> incl. Rods, Galvanised Pipes, Angles, Pallet Contents
730	1	<b>Qty of Rio</b> for Construction
731	32	<b>Ceiling Batten</b> 6100 x 600mm
732	5	<b>Lengths of Forming Timber</b> 4540 x 130 x 15mm
733	1	<b>Qty of (19) Assorted Lengths Timber</b> incl. Pine
734	15	<b>Assorted Lengths of Pine Timber</b>
735	13	<b>Assorted Lengths of Nelson Pine Timber</b>
736	2	<b>Metal Gate Doors</b> with Barb Wire Top, 1950 x 2200mm
737	4	<b>Metal Sheets</b> (2) with D Shackle & (2) Mounted on Metal Tube, 3000 x 740mm
738	6	<b>Brick Layers Scaffold</b>
739	1	<b>Qty of (2) Assorted Rolls of Fencing Wire</b> Various Sizes, Pallet Contents
740	8	<b>Assorted Colourbond Corrugated Roofing Iron Sheets</b> Assorted Sizes
741	1	<b>Rheem Pool/Spa Heat Pump</b> Model RA8358TI-E-PD
742	2	<b>Sets of (2) Metal Tilting Car Ramps</b> 5100 x 465 x 830mm
743	6	<b>Assorted Black Plastic Builders Sheets</b> Various Sizes
744	1	<b>6 Mtr Shipping Container</b> Serial No.: FBXU8947388
745	1	<b>6 Mtr Shipping Container</b> Serial No.: CRXU1950794
746	1	<b>Qty of (20) Assorted Safety Items</b> incl. Stop & Slow Sign, (3) Witches Hat, 17 Safety Bollard with 6Kg Base
747	1	<b>Metal Scaffold Plank</b> 2410 x 230 x 60mm
748	173	<b>Star Pickets</b> 900mm

---

LOT NO	QTY	DETAILS
749	1	<b>Qty of (36) Assorted Star Pickets</b> 610mm
750	14	<b>Assorted Star Pickets</b> Various Sizes
751	1	<b>Qty of Assorted Timber Boards</b> Various Sizes, Pallet Contents
752	1	<b>Qty of Assorted Timber</b> incl. Architraves, Various Sizes
753	1	<b>Qty of Assorted Timber</b> incl. Architraves, Various Sizes
754	4	<b>Assorted Cut Off Steel</b>
755	1	<b>Qty of (2) Assorted Hardware Items</b> incl. Plastic Corrugated Pipe & Plastic Drain
756	7	<b>Qty of (7) Assorted Green Shade Cloths</b> Various Sizes
757	1	<b>Qty of Assorted Hardware Items</b> incl. Black Builders Plastic, Heavy Duty Plastic, Thermal Brane 4 Foil, Pallet Contents
758	1	<b>Qty of Assorted Road Sign</b> incl. (2) Stands
759	1	<b>Speakman Combination Shower Eye/Face Wash Bowl Hand/Foot System SE-607</b>
760	1	<b>Qty of (6) Assorted Construction Signs</b> incl. Edge on Collins, etc
761	11	<b>Assorted Timber Doors</b> Various Sizes
762	7	<b>Assorted Doors</b> incl. MDF, Assorted Sizes
763	1	<b>Five Tier Timber Shelving Unit</b> 1270 x 500 x 1750mm
764	1	<b>Qty of (2) Assorted Garden Hoses</b> Various Sizes
765	2	<b>Lay Flat Hose Rolls</b> with Connection, Approx. 14 Mtrs
766	1	<b>Qty of (2) Assorted Orange Mesh</b> Various Sizes
767	1	<b>Heavy Duty Hose</b> Approx. 36 Mtrs
768	1	<b>Lenix 3 Phase 1 Tonne Hoist</b> with 156 Ft Cable

---

LOT NO	QTY	DETAILS
769	1	<b>Qty of Assorted Building Items</b> incl. Building V Tie, Galvanised Wire, Ramset Oxy Grout
770	1	<b>Timber Shelving Unit</b> 3 Tier, 1270 x 500 x 1750mm
771	1	<b>Bartell Concrete Trowelling Machine</b> Powered by Honda GX270 Motor
772	1	<b>Flextool Concrete Vibrator</b> Model UE26-20, Powered by Honda GX160 Motor, Note: Parts Only
773	1	<b>Flextool Concrete Vibrator</b> Model UE26-20, Powered by Honda GX160 Motor
774	2	<b>Metal A-Frames</b>
775	1	<b>Otis 3 Phase Electric Belt Drive</b> Serial No.: 48090
776	1	<b>Childrens Playground</b> with Slide, Note: Disassembled
777	1	<b>Qty of Bromeliads</b>
778	1	<b>TJM Roof Rack</b> 1850 x 170mm
779	1	<b>LadaMax 6M Single Industrial Ladder</b>
780	4	<b>5M Aluminium Concrete Screeds</b>
781	7	<b>Star Pickets</b> 2450mm
782	15	<b>Star Pickets</b> 1350mm
783	9	<b>Star Pickets</b> 1640mm
784	9	<b>Star Pickets</b> 1790mm
785	2	<b>Wheelbarrows</b>
786	1	<b>Wheelbarrow</b>
787	1	<b>Wheelbarrow</b>
788	1	<b>Outdoor Glass Table</b> with Metal Frame, 900 x 900 x 700mm
789	1	<b>Outdoor Table</b> with Glass Top & Metal Frame, 1525 x 965 x 700mm
790	1	<b>Giant Boulder Disc 24 Speed Mountain Bike</b> Aluxx 6000 Series

---

LOT NO	QTY	DETAILS
791	1	<b>Norco Katmandu Mountain Bike</b> 6061 Aluminium, 21 Speed
792	1	<b>Giant Thermo 2 24 Speed Mountain Bike</b> 6061 Aluxx Aluminium
793	1	<b>Haro V-3 24 Speed Mountain Bike</b>
794	1	<b>Norco 24 Speed Mountain Bike</b> 6061 Aluminium, Note: Only One Pedal
795	2	<b>Repco Torrent 18 Speed Mountain Bikes</b>
796	1	<b>GT Aggressor 21 Speed Mountain Bike</b>
797	1	<b>Everest XCR 21 Speed Mountain Bike</b>
798	1	<b>Tourex X-Train 66 18 Speed White/Blue Mountain Bike</b> with Front Suspension
799	1	<b>Tourex X-Train 66 18 Speed White/Blue Mountain Bike</b> with Front Suspension
800	1	<b>Diamondback Impression 18 Speed Silver/White Mountain Bike</b> with Front Suspension
801	1	<b>Kojima 16 Speed Road Bike</b> Model KR1000
802	1	<b>Tourex X-Train 60 18 Speed Blue/Pink/White Mountain Bike</b> with Front Suspension
803	1	<b>Samito Works DSR 8 Speed Mountain Bike</b> with Front Suspension
804	1	<b>Explorer 6 Speed White Mountain Bike</b> with Front Suspension
805	1	<b>Southern Star Terrain 18 Speed Mountain Bike</b> with Front & Rear Suspension
806	1	<b>Repco Blaze 18 Speed Red/White/Blue Mountain Bike</b> with Front Suspension
807	1	<b>Southern Star Trixter BMX</b>
808	1	<b>Dirt Burner 02 7 Speed Yellow/Black Mountain Bike</b> Note: No Seat
809	1	<b>Airwalk Girls Bike</b>
810	1	<b>Huffy 16" Cream Soda Girls Bike</b> with Training Wheels & Basket, Tassels & Bell
811	1	<b>Childrens Cyclops Balance Bike</b>
812	1	<b>Maxxis Medusa Bicycle Tyre &amp; Rim</b> with Disc Brake

---

# Quaid

## REAL ESTATE

*"Serving North Queensland  
for over 65 years"*

### 502/279 Esplanade, Cairns North



### COMING SOON! LUXURY AT NAUTILUS

- Located on the fifth floor in prestigious Natulius on the Esplanade. 2 bedroom, 2 bathroom, 2 car with Views!
- Inground pool, BBQ area + full sized tennis court
- Siemens and Bosch appliances + 900mm porcelain tiles throughout
- 2 carparks, storage cage and security access with lift



Paula Campion

0409 267 756

[paula.campion@quaid.com.au](mailto:paula.campion@quaid.com.au)

# **IMPORTANT NOTICE**

## **Electrical Power Tools and Equipment (Inc. electrical leads)**

The electrical articles in this auction have not been proved to be electrically safe. The electrical articles have not been tested by a qualified electrical worker and have not been proved to be electrically safe.

### **General advice on how to use second-hand electrical power tools and equipment (including electrical leads) safely**

**General safe use** advice for electrical power tools and equipment etc. intended for use with rated voltage of not more than 250V for single phase appliances and 480V for other appliances.

This advice is not intended to replace specific manufacturer's information but can be used as a general guide.

This advice does not cater for young children or people who are physically weak.

You are urged to:

- Use the power tool only for its intended purpose.
- If the power tool is for indoor use only, do not use outdoors.
- Do not immerse the power tool in water unless it is designed for this purpose.
- Keep hands, fingers, feet, toes and hair away from dangerous moving parts, cutting blades and the like.
- Do not use electrical power tools in the rain.
- Make sure you have dry hands when operating an electrical power tool.
- Do not use a damaged power tool.
- A power tool may not be intended for use by children or people with an illness or disability without supervision.
- Young children should not be allowed to play with the power tool.
- Some power tools require special precautions for installation or user maintenance or both.
- The plug must be removed from the socket-outlet before any cleaning or maintenance is done.
- Do not place cord extension sockets or portable power outlet boards where they may be splashed or where moisture may get in.
- Ensure ventilation holes or outlets are not blocked or partially obstructed.
- If a fixed power tool does not have a supply cord and plug or other means for disconnection from the supply, a means for disconnection must be incorporated into the fixed wiring according to the Wiring Rules.
- If the supply cord or plug is damaged:
  - The manufacturer or its service agent or a similarly qualified person must replace the cord to prevent an accident.
  - Power tools with specially prepared cords must be replaced by a special cord or assembly available from the manufacturer or its service agent.
  - Other power tools that have a supply cord that cannot be replaced should be scrapped.
- The power tool should be maintained in order to ensure a long, useful life and to protect the operator against electric shock or mechanical mishaps.
- A safety switch can enhance electrical safety when using electrical power tools.