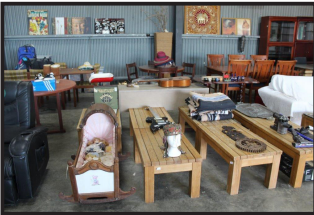


# PUBLIC AUCTION

On instructions from Govt Depts, Administrators, QLD Police, Importers & Private Vendors

**FRIDAY 31 MAY - 9.30AM START**

**ZHUOYUAN 9D INTERACTIVE CINEMA, AUDIO EQUIPMENT**



**OFFICE:** Sound Bar & Bluetooth Subwoofer, Bose, Near & Fusion Outdoor Speakers, Allen & Heath Mixing Consoles, Eventix Switcher & Mixers, Remote Key Pad, Data Projectors & Lenses, Computers, Desks. **CATERING:** Curved Glass Refrigerated Cabinet, Williams 2 Door S/S Refrigerator, LG Solar Dom Convection Microwave Ovens. **FURNITURE:** Entertainment Units, Outdoor Tables, Bench Seats, Fabric Lounges, Hallway Tables, Chest of Drawers, Rugs, Victorian Chairs, Dining Setting, Rocking Chair, Occasional Tables, Display Cabinets, Carved Glory Box. **VEHICLES:** 13 Mahindra 4X4 Utility, 11 Hyundai iLoad, 11 Holden Commodore Wagon, 11 Ford Ranger Dual Cab 2WD, 06 Mitsubishi Outlander LS ZF Wagon, 06 Nissan Patrol, 03 Subaru Forester Wagon, 97 Holden Commodore Utility, 82 Jeep CJ7 Hawk Hardtop. **08 Snorkel SR4084 Rough Terrain Scissor Lift, Apollo 1104 4WD Loader Tractor, Suzuki 60Hp 4 Stroke O/B Motor, 3 Point Linkage Backhoe Attachment, Row Marker, Machinery Trailer, Refrigerated Vending & Automatic Coffee Machines.**

**AND SO MUCH MORE ...**

**OPEN FOR VIEWING THURSDAY 30<sup>th</sup> 3-6PM**

Visit our website to subscribe for our Flyer & Catalogue

[www.quidauctioneers.com.au](http://www.quidauctioneers.com.au)

*Note: A 15% Buyers Premium will be added to the knockdown price of each lot sold, excluding Vehicles to which a 10% Premium will apply. Vehicles are sold without Statutory Warranty and are not subject to a Cooling off Period. This is a GST Inclusive Sale. E-mail catalogue requests to: [auctions.support@quaid.com.au](mailto:auctions.support@quaid.com.au). Check us out on Facebook.*

**Quaid**  
AUCTIONEERS

**AUCTIONEERS & VALUERS**

401 Sheridan Street, Cairns North - Phone 4051 3300

## TERMS AND CONDITIONS OF AUCTION SALE

Quaid Real Estate Pty Ltd T/As **QUAID AUCTIONEERS (ACN: 010331423)**

### AS AGENT FOR THE SELLER (Hereinafter "the Company")

1. The highest approved bidder for each lot shall be the Purchaser subject to the approval of the Vendor and the reserve price if any.
2. If any dispute or difference shall arise as to the highest bidder the Auctioneer may re-open the bidding and resubmit the lot for sale commencing with the highest amount previously bid for the lot or the Auctioneer may decide on the highest bidder in such other manner as he in his absolute discretion shall deem fit. The decision of the Auctioneer shall be final and no bidder shall have any right of recourse against the Auctioneer, the Company or the Vendor.
3. Where any person is bidding on behalf of another person, the bidder must first provide the Auctioneer with a copy of his written authority to bid to the Auctioneer prior to the commencement of the Auction otherwise the bidder is deemed to be acting on his own behalf.
4. The Auctioneer may at his discretion refuse to accept any bid from any person and no bid if accepted shall be retracted without the consent of the Auctioneer. The Auctioneer may decline the offer for any lot or withdraw any lot or lots from sale prior to the fall of the hammer for the particular lot or lots.
5. Each purchaser shall immediately after the fall of the hammer for a lot show to the Auctioneer their bidder registration number.
6. Immediately after the fall of the hammer a contract for the sale and purchase of the lot between the Vendor and the Purchaser shall be deemed to be formed at the purchase price upon the terms advised.
7. If the Property is not sold at Auction the Vendor may personally, or by the Company or by any agent negotiate freely with any one or more of the bidders or any other person(s) without incurring liability to any of the bidders.
8. The whole of the lots having been available for inspection prior to the auction no allowance or refunds will be made nor will any Purchaser be permitted to reject any lot on the ground that it is not correctly described in the catalogue. **The said lots are to be taken with all faults and defects (if any) and will be at the risk of the Purchaser on the fall of the hammer and thereafter the Vendor will be free of all responsibility for safe guarding the lot and will not be liable for any loss of or damage to the lot sold whether such loss or damage is caused or contributed to be any act neglect or default of the vendor its servants employees or agents.**
9. Neither the Vendor nor the Company make any representation express or implied or give any warranty express or implied as to the state condition or suitability of the lot or any part of it either as it exists or for any proposed usage. Any bidder/Purchaser must rely entirely upon their own inspection searches enquiries or advices as to any matter affecting the lot or any part of it. Any information given in relation to the lot by the Vendor or the Company or any agent on their behalf is given and accepted entirely without responsibility.
10. The purchaser accepts all risk and responsibility for losses, damages, personal injury and other consequences resulting directly or indirectly from the purchase of any lot and indemnifies the Vendor and the Company against all expenses, losses, damages and costs the Vendor or the Company may incur directly out of or in connection with: a) any personal injury caused to any person as a result of the use of the lot purchased from the Vendor/Company; b) any damage caused as a result of the use of any lot purchased from the Vendor/Company; and c) any negligence, breach of duty or breach of statute by the purchaser in connection with the use of the lot purchased from the Vendor/Company. To the maximum extent permitted by law, the Vendor/Company excludes all liability arising directly or indirectly from the purchase of the lot by the Purchaser.
11. The balance of the purchase price shall be paid by the Purchaser in cash, direct debit, eftpos, credit card (visa or mastercard), no later than 4.00pm AEST on the day of the sale (unless prior arrangements have been made by the Purchaser with the Vendor). In the event of delivery being made or possession obtained by the purchaser prior to payment in full of the purchase price title to and property in the lot does not pass to the Purchaser until payment has been made in full.
12. Should any deficiency arise between the quantity of goods described at the time of sale and that available at the time for delivery the Purchaser shall take and the Auctioneer shall be required to effect delivery of only the quantity actually so available. No compensation will be paid in respect of any such deficiency but the Purchaser may claim a pro-rata adjustment of the purchase price. No adjustment will be made unless the Purchaser makes this claim at or before the time of delivery.
13. All lots which have been paid for in full must be removed by the Purchaser at the Purchaser's expense by 4.30pm AEST on the day of the sale (unless prior arrangements have been made by the Purchaser with the Vendor) or as specified at the time of sale.
14. Upon any Purchaser failing to comply with any of the above conditions all monies received in part payment of the purchase price shall be absolutely forfeited to the Vendor and all lots not removed as aforesaid may be re-sold by public auction or private contract and the deficiency in price (if any) on such resale together with all costs and charges incurred in attending thereto shall be paid forthwith by the defaulting Purchaser and if not paid the Vendor has the right to recover such amount from the defaulting Purchaser as a debt and the Purchaser shall have no claim against the Vendor or the Company as a result of same.
15. Time shall be of the essence of the sale of any lot.
16. The Auctioneer reserves the right to one bid.
17. Terms are strictly cash before delivery.
18. Special Conditions Regarding: Electrical Appliances: These appliances are in a used condition and no warranty is given that their present condition complies with the safety requirements of the State Electricity Commission or that they are otherwise fit for use. It is pointed out that under the State Legislation the Purchaser is required before re-sale or use to have the appliance examined and repaired by a registered electrical contractor.
19. The Purchaser acknowledges that all lots purchased are subject to a "Buyers Premium" at a rate as stated in the Company's advertisements and catalogues. The Buyers Premium will be payable at the same time as the purchase price and is payable to the Company in consideration for services and facilities provided to the Purchaser by the Company.
20. A right to bid by or on behalf of the Vendor is expressly reserved.
21. Unless otherwise stated, goods are sold on a GST Inclusive basis.
22. The purchaser acknowledges that the Company is acting as authorised agent of the Vendor and any rights of action he may have in respect to the lots purchased by him lie against the Vendor and not the Company.
23. No servant or agent of the Company is authorised to waive, add to or vary these conditions without the written authority of the Managing Director.
24. \* Denotes that the Company has a beneficial interest.  
**These conditions are to be read in conjunction with any special conditions outlined in the sales catalogue. Where there is inconsistency between the conditions herein and the Auction Catalogue, the Catalogue will take precedence.**

**NOTE TO BUYERS:**

- THIS IS A GST INCLUSIVE SALE. A 15% BUYERS PREMIUM APPLIES TO THE KNOCKDOWN PRICE OF EACH LOT SOLD EXCLUDING VEHICLES TO WHICH A 10% BUYERS PREMIUM & SELECTED MOBILE PLANT TO WHICH AN 11% BUYERS PREMIUM WILL APPLY.
- VEHICLES/MOBILE PLANT ARE SOLD WITHOUT A STATUTORY WARRANTY, ARE NOT SUBJECT TO A COOLING OFF PERIOD AND ARE SOLD UNREGISTERED AND WITHOUT A ROADWORTHY CERTIFICATE. "CP" INDICATES VEHICLES AUSTRALIAN COMPLIANCE DATE.
- TESTING FACILITIES FOR ELECTRICAL ITEMS ARE AVAILABLE ON THE DAY OF INSPECTION. PLEASE SEE OUR STAFF FOR ASSISTANCE.
- PURCHASERS OF ALCOHOL MUST BE OVER 18 YEARS OF AGE.
- PURCHASERS OF MOBILE PHONES/TABLETS ARE REMINDED THAT GOODS ARE SOLD IN AN "AS IS" CONDITION AND IT IS THE RESPONSIBILITY OF THE BUYER PRIOR TO SALE TO ENSURE THE CONDITION AND SUITABILITY OF THE PHONES/TABLETS PURCHASED. NO ASSISTANCE CAN BE PROVIDED WITH ANY PIN OR LOCK CODES REQUIRED FOR THE OPERATION OF PHONES/TABLETS.
- PLEASE NOTE SOME LOTS ARE SOLD ON BEHALF OF THE LOSS ADJUSTORS. IT IS RECOMMENDED THAT INTENDING PURCHASERS INSPECT INDIVIDUAL ITEMS PRIOR TO BIDDING.
- PLANT SAFETY INFORMATION: EQUIPMENT OFFERED FOR SALE AT THIS AUCTION MAY NOT COMPLY WITH WORKPLACE HEALTH & SAFETY STANDARDS. PRIOR TO RE-USE PURCHASERS ARE REMINDED OF THEIR OBLIGATIONS AS AN OPERATOR OF PLANT UNDER RESPECTIVE STATE BASED OHS LEGISLATION TO COMPLETE PLANT RISK ASSESSMENTS FOR THE INSTALLATION, COMMISSIONING AND OPERATION FOR THE PLANT ITEMS PURCHASED.
- WHERE MULTIPLE QUANTITIES ARE OFFERED AT AUCTION, LOTS ARE SOLD ON A PER EACH BASIS, WITH THE HIGHEST BIDDER GIVEN THE OPPORTUNITY TO TAKE 1, OR MORE AT THE BID PRICE, OR IN MINIMUM QUANTITIES AS NOMINATED BY THE AUCTIONEERS AT THE TIME OF SALE.
- ANY MENTION OF PRECIOUS METALS AND/OR GEMS, CARAT OR WEIGHTS CONTAINED IN THE CATALOGUE IS A GUIDE ONLY. NO SALE SHALL BE INVALIDATED AND NO COMPENSATION SHALL BE PAID IN RESPECT OF ANY FAULT (WHETHER ASCERTAINABLE ON INSPECTION OR LATENT), OR ERROR OF DESCRIPTION IN THE AUCTION CATALOGUE OR OTHERWISE. THE MENTION OF PRECIOUS METALS, GEMS, CARATS OR WEIGHTS IS INCLUDED TO ASSIST POTENTIAL BIDDERS TO DECIDE WHETHER OR NOT TO ATTEND THE AUCTION AND DOES NOT CONSTITUTE ANY WARRANTY AS TO QUALITY, FITNESS FOR PURPOSE OR ACCURACY, ALL CONDITIONS AND WARRANTIES IMPOSED BY STATUTE (IN RELATION TO THE STATE, QUALITY OR FITNESS OF THE GOODS AND OF EVERY OTHER KIND) ARE HERBY EXPRESSLY EXCLUDED. NO RESPONSIBILITY IS ACCEPTED BY THE AUCTIONEER OR HIS PRINCIPAL FOR THE ACCURACY OF ANY STATEMENT, OPINION OR INFORMATION CONTAINED IN THIS CATALOGUE AND POTENTIAL BIDDERS SHOULD RELY ON THEIR OWN ENQUIRIES ON INSPECTION BEFORE BIDDING.
- PAYMENT ACCEPTED CASH, DIRECT TRANSFER, EFTPOS, VISA & MASTERCARD ONLY.
- BANK ACCOUNT DETAILS FOR DIRECT DEPOSITS:

BANK:	ANZ
BRANCH:	ABBOTT STREET, CAIRNS
BANK ACCOUNT NAME:	QUAID REAL ESTATE TRUST ACCOUNT
BRANCH NO.:	014 734
ACCOUNT NO.:	3818 39175

---

LOT NO	QTY	DETAILS
--------	-----	---------

---

## SALES STARTS AT LOT 1 AT 9.30AM

SPECIAL LOTS 815 TO 902 WILL BE OFFERED AT 12 NOON

1	1	<b>Kenwood HD Dash Camera (As New)</b> Model DRV-N520, Micro SD Adapter
2	1	<b>Brunos Batteries Jumpstart</b> with Charger
3	1	<b>Panasonic Lumix Digital Camera</b> Model DMC-Tz110, Optex Carry Case
4	1	<b>Garmin Nuvi 200 Series Navigation System</b> with Charger & User Manual
5	1	<b>Timber Office Desk</b> 1800 x 900 x 730mm
6	1	<b>Blue Microphone</b>
7	1	<b>Canon Sigma Camera Lense</b> 10-20mm, in Sigma Case
8	1	<b>BSB Portable Bluetooth Speaker</b> Model SOUNDTUBE, Note: No Charger
9	1	<b>Digitech UHF Hand Held Radio</b>
10	1	<b>Andoer HD Digital Video Camera</b> 16Mp, Note: No Charger
11	1	<b>Car Multifunction Vehicle GPS Tracking Device (As New)</b>
12	3	<b>Sound Craft 8 Channel Audio Mixers</b> Model SPIRITM8
13	1	<b>JVC Portable Bluetooth Speaker</b> Model XS-XN30AB, Note: No Charger
14	1	<b>Anko Bluetooth Portable Speaker</b> Note: No Charger
15	1	<b>Binatone 4.3" LCD Touch Screen GPS</b> Model U435, incl. Accessories
16	1	<b>LTL Acorn Scouting Camera</b> Model LT-5210A
17	1	<b>Smartronic Flat Panel Sound Bar</b> Model 7373, with iPod Dock
18	1	<b>Logitech Stereo Subwoofer System</b> Model Z313

LOT NO	QTY	DETAILS
19	4	<b>Dell Optiplex 9010 All In One Computers</b> with 3.30 Ghz Intel Core i5 Processor, 250 Gb HDD, 22" Monitor, Keyboard, Mouse & Power Cable
20	1	<b>Timber Laminate Office Tables</b> 2000 x 900 x 740mm
21	1	<b>LG 300W High Resolution Sound Bar</b> Model SH5B, with Bluetooth Wireless Subwoofer, Remote Control, User Manual & Power Cables
22	1	<b>Dell 23" Monitor</b> Model E2314HF, with Power Cables
23	1	<b>Samsung 22" Monitor</b> Model S22D300HY
24	1	<b>Dell 15" Monitor</b> Model E153FPC, with Power Cable
25	1	<b>Dell 17" Monitor</b> Model 1704FPTT, with Power Cable
26	1	<b>Qty of (2) Samsung 19" Monitors</b> Model LS19MYKEBQ/XSA
27	4	<b>Dell Precision T3610 Towers</b> with Intel Xeon Processor, 4 Gb RAM, 1000 Gb HDD, Wireless Keyboard, Mouse, Note: No Power Cable
28	6	<b>Dell Optiplex 9010 Desktop Computers</b> with 3.6 Ghz Intel Core i5 Processor, 4 Gb RAM, 500 Gb HDD, 22" Monitor, Keyboard & Mouse, Note: No Power Cable
29	3	<b>Dell Optiplex 790 Desktop Computers</b> with 3.6 Ghz Intel Core i5 Processor, 4 Gb RAM, 500 Gb HDD, 22" Monitor, Keyboard & Mouse, Note: No Power Cable
30	4	<b>Dell Optiplex 9020 Desktop Computers</b> with 3.6 Ghz Intel Core i5 Processor, 8 Gb RAM, 500 Gb HDD, 22" Dell Monitor, Keyboard & Mouse, Note: No Power Cable
31	1	<b>Soniq 43" LED Television Model E43V15C-AU</b> with Stand & Remote Control
32	1	<b>Awa 26" LCD Television</b> Model MSDV2611-03, with Built-in DVD Player, Remote Control
33	1	<b>Grundig Misuro 22" HD LCD Television</b> with DVD Player, Remote Control, Wall Mount & Accessories
34	1	<b>Kogan 19" Television</b> Model KALED19DVDVB, with Built-in DVD Player, Note: No Remote Control
35	1	<b>Fusion Subwoofer Boom Box</b>
36	1	<b>Low Powered Aureol Stage Spot Light</b>

LOT NO	QTY	DETAILS
37	1	<b>Qty of (4) Bose Speakers</b> incl. (2) Subwoofers
38	5	<b>N.E.A.R. Stage Speakers</b> Part No.: 5,335,287 D432,522
39	1	<b>Super Star Multi Colour Changing Stage Light</b> Model SL-9844, 230V, 500W
40	3	<b>Color Pro Programmable Stage Lights</b> Model FU3516H3
41	8	<b>JBM Colour Changing Stage Lights</b> Model FU3516H3
42	1	<b>Magenta Kit</b> incl. (3) Multiview AK600 DP with Receiver, (3) Multiview XRTX Transmitters, (6) Power Supplies
43	1	<b>Magenta Kit</b> incl. (2) Multiview AK600 Receivers, (2) Transmitters with (4) Power Cables
44	3	<b>Analog Way Easy Fade Video &amp; Computer Mixer/ Switcher High Resolution Seamless Scaler</b> Model EFD341
45	1	<b>Evenfix Hi-Res Seamless Switcher</b> incl. Mixer 8x2 Universal Scaled Matrix with Manual Model CTX8022
46	1	<b>Realistic Switch Integrated Stereo Amplifier</b> Model SA-155
47	1	<b>Qty of (2) Aver Media iMicro Computer to TV/Video Adapters</b> Model KOC3, with Power Cable & Remote Control
48	1	<b>Extron Inline Distribution Amplifier/Line Driver</b> Model RGBHVDA, with Power Cable
49	1	<b>Qty of (4) XBox 360 Consoles</b> incl. Power Cale, Note: No Power Packs, Controllers or HDMI Cables
50	2	<b>Extron VGA Extender Kits</b> Model MTP1500RL-15HDA, incl. (2) Power Cables
51	1	<b>PC DJ Digital Audio Controller-2</b> Model DAC-2, User Manual
52	1	<b>Analog Way Digi Scan 1600 Computer to Video Converter</b> Model DSV1600
53	2	<b>Extron 2 Input Universal Analog Interface</b> Model GRB202RXI, with Audio Enhanced ADSP, Power Cable
54	1	<b>Extron 2 Way Data Switch</b> Model SW2VGAXI, for VGA/MAC
55	1	<b>Extron Video Distribution Amplifier</b> incl. Power Cable

LOT NO	QTY	DETAILS
56	4	<b>Extron Ground Loop Inhibitor</b> Model GLI2000
57	5	<b>Kramer Tools Comprehensive VP-400N High Resolution XGA Distribution Amplifiers</b> Model VP-400N, with Power Cables
58	2	<b>Extron Universal Interface</b> Model RGB164XI, with ADSP, Power Cable
59	1	<b>Extron 4 Way Data Switch</b> Model SW4VGAXI, for VGA/MAC
60	1	<b>Corio Scan Select</b> Model CSS-0185A, Power Cable & Remote Control
61	2	<b>Extron 3 Input Universal Computer/Video Audio Interfaces</b> Model RGB203RXI, with Enhanced ADSP, Power Cable
62	1	<b>Allen &amp; Heath 32 Channel Sound Audio Mixer</b> Model GL2400
63	2	<b>Allen &amp; Heath 24 Channel Sound Audio Mixer</b> Model GL240
64	1	<b>Sanyo Projection Lamp</b> Model POA-LMP38, to suit Sanyo XP45 Projector
65	1	<b>Sanyo Pro Xtrax Multiverse Projector</b> Model TLC-XP200L, incl. Remote Control, Manual
66	1	<b>Sanyo Projection Lamp</b> Model POA-LMP67, to suit Sanyo XP50/55 Projector
67	1	<b>IPAQ Projector Lamp Light</b> Model LP90
68	1	<b>Extron 2 Output RGB &amp; Sync Analog Distribution Amplifier</b> Model ADA200HV, with Power Cable
69	2	<b>Sanyo XP Series Standard Lens</b> Ratio 1.8-2.3"1
70	2	<b>Sanyo XP Series Wide Standard Lens</b>
71	1	<b>Sanyo XP Motorised Short Throw Zoom Lens</b> Model LMS-W31A, to suit W31A-XP200 Projector
72	2	<b>Sony Data Projectors</b> Model VPL-CX86
73	1	<b>Sanyo XP55 Projector</b> Model PLCXP55 with Lense & Remote
74	1	<b>HPS 1/10 Grampus Electric Brushless 4WD RTR RC Buggy</b> with (2) Batteries, Controller & Charger

LOT NO	QTY	DETAILS
75	1	<b>Qty of (7) Assorted PS4 Games &amp; Accessories</b> incl. (2) Controllers, Headphones, Camera, (2) DVDs
76	1	<b>Qty of (6) Assorted Xbox One Accessories</b> incl. Connect Camera, Controller, (4) Games
77	1	<b>Qty of (11) Assorted PS4 Games</b> incl. Marvel vs Capcom Infinite, Assassins Creed Syndicate
78	1	<b>Apache C1 Flux Electric 4WD Buggy Toy</b> in Parts with all Parts, (2) Batteries, Charger, Remote
79	1	<b>Timber Laminate Office Table</b> with Metal Legs, 1500 x 760 x 740mm
80	1	<b>LG DVD Player (As New)</b> Model DP132 with Manual, Remote & Cords
81	4	<b>JVC DVD Players</b> Model XV-N332S, with Remote Control
82	1	<b>Timber Laminate Office Desk</b> with Metal Legs, 1800 x 800 x 760mm
83	8	<b>Cisco Dual Band 4 Element Mimo Antennas</b> Model AIR-AUNT2565-R
84	8	<b>Sony DVD Players</b> Model DVP-NS780V
85	37	<b>Cisco Catalyst 3600 Series Access Points</b> with Integrated Antennas, Wireless Access Point LED Indicator, Ram 256UB, Model Aircap 36021-N-KW
86	1	<b>Royal 200 Manual Type Writer</b> with Cover
87	1	<b>Epson LCD Projector</b> Model EMP-S5, 100 to 240 Volt incl. Cords & Power Cable in Carry Case
88	8	<b>Cisco 4X4 Multiple Input/Output</b> with Spatial Streams
89	1	<b>Yamaha Multi 5 Disc CD Player</b> Model CDC-575, incl. (2) Remote Controls
90	1	<b>Toshiba TLP-X2000 Projector</b> incl. Carry Case, Manual & Cords
91	2	<b>Eve Fold Back Stage Speakers</b>
92	6	<b>N.E.A.R. Stage Speakers</b> Model AEL1-6A
93	1	<b>Server Cabinet</b> incl. Socomec UPS, Truenet & Krone Modems & Wiring 800 x 1000 x 2000mm
94	5	<b>Assorted Corded Keyboards</b>



LOT NO	QTY	DETAILS
95	1	<b>Digitech 2 Channel UHF Microphone System</b> Model AM-4114, incl. (2) Microphones
96	3	<b>Sets of (2) Dell Computer Speakers</b> Model 8215, Multi Media Speaker
97	1	<b>Qty of (3) Assorted Electronic Items</b> incl. Supercheap Car Mouse, Ottobox Samsung Galaxy S3 Phone Case & Logitech Webcam C200
98	1	<b>Canadian Club Retro Style Headsets (As New)</b>
99	1	<b>Pair of Headphone</b>
100	1	<b>Pair of Headphones</b> Note: No Charger
101	1	<b>Sony FM/AM Walkman</b>
102	1	<b>4 Player Laser X Taser Tag Game</b>
103	2	<b>ipod Digital Music System</b> Model SF-22, to Suit iPod, Power Cable
104	1	<b>Plantronic Bluetooth Headset</b> Model 501S
105	1	<b>Waeco Magic Speed HUD Headup Display (As New)</b> Model MHUD100
106	15	<b>Timber Laminate Office Drawers</b> with (3) Drawers, with Keys, 65 x 450 x 690mm
107	1	<b>Audiosonic Bluetooth Keyboard</b> Model DMC-FX3, 6Mp
108	1	<b>Professional High Grade HiFi Speaker Cable</b> Up to 30 Mtrs
109	1	<b>Aero Antenna Attachment</b>
110	6	<b>Timber Laminate Office Drawers</b> with (3) Drawers, on Castors, Note: No Keys, 465 x 450 x 690mm
111	1	<b>Pioneer Carrozzeria CD/Tuner Head Unit (As New)</b> Model DEH-360
112	1	<b>Kent Adjustable Tripod</b>
113	1	<b>Qty of (2) Assorted Camera Accessories</b> incl. Fuji Film Camera Case, Sandisk Extreme Micro SD Card with Adapter
114	1	<b>K World DVD Maker</b> USB 2.0
115	1	<b>Logitech Speaker Set (As New)</b> Model X-230, incl. (2) Speakers & Subwoofer, in Box

LOT NO	QTY	DETAILS
116	1	<b>Sandleford Electronic Safe</b> Model ES20, with Key & Code
117	1	<b>Nortl IP Audio Conference Phone (As New)</b> Model 2033, with Extended Microphones, in Box
118	1	<b>Timbre Rhythm 61 Key Digital Electronic Keyboard</b> Model QM-6118
119	1	<b>Server Cabinet</b> 620 x 900 x 1210mm
120	1	<b>Precision Metal Filing Cabinet</b> with (4) Drawers, 490 x 640 x 1310mm
121	1	<b>HP DeskJet 3700 Multifunction Centre</b> Model 3721
122	1	<b>HP Multifunction Centre</b> Model SDGOB-1511
123	1	<b>Brownbuilt Metal Filing Cabinet. 4 Drawer</b> Lockable with Key
124	1	<b>Jastek Binder</b> Model 250C, incl. Assorted Binding Combs
125	1	<b>Ibico IBI Master Binder</b> Model 85
126	2	<b>Boxes of Assorted Cash Register Rolls</b>
127	1	<b>Alpine Subwoofer Speaker</b> Model ST12
128	5	<b>Timber Laminate Drawers with (3) Drawers</b> Note: No Key, 400 x 450 x 520mm
129	1	<b>V Tech Telephone</b> with Answering Machine incl. Power Cord & Accessories, Model 15350
130	1	<b>Panasonic Cordless Telephone</b> Model KX-TG1611AL, with Charger
131	4	<b>Canon Pixma Black Ink Cartridges (As New)</b> Model PD-40
132	1	<b>Timber Laminate 3 Pce Office Desk</b> with (6) Drawers, 4190 x 750 x 740mm
133	1	<b>Qty of Assorted Cables &amp; Chargers</b> incl. PC Interface Cables with 9 Pin & Monitor Cable
134	2	<b>FSP Group Incorporated AC/DC Adapters</b> Model FSP050-1AD101C
135	1	<b>Mobile Phone Cradle</b> for Hands Free Car Kit, Model CKC165

LOT NO	QTY	DETAILS
136	1	<b>Plantronics Practica Telephone Head Set</b> Model A100, with Manual
137	1	<b>Magellan Vehicle Mounting Bracket</b> with Charging Cable
138	4	<b>Magellan External GPS Antennas</b> to suit Road Mate Series
139	1	<b>Ram Getac GPS Mounting Bracket</b> with Mount & Cable
140		<b>Vacant Lot</b>
141	1	<b>Magellan Vehicle Mounting Bracket</b> Meridian Series
142	3	<b>Cig Oxy Viva 3 Resuscitators</b> in Stainless Steel Carry Case, Note: May not be Complete
143	4	<b>Timber Laminate Desks</b> with (4) Drawers, 2500 x 640 x 750mm
144	1	<b>Lexmark Multifunction Centre</b> Model LEX-MO3-002
145	1	<b>Panasonic KX-B550SZ Electronic Panaboard</b>
146	3	<b>Projector Screens</b> in Adjustable Stands
147	1	<b>Whiteboard</b> 1190 x 1490mm
148	1	<b>Timber Laminate Book Shelf</b> with (2) Shelves, Note: Slight Damage, 900 x 360 x 1800mm
149	2	<b>Fuji Xerox Docu Print C3290FS Printer</b> Serial No.: 206762, Model C3290
150	1	<b>Canon Pixma Multifunction Centre</b> Model K10355
151	1	<b>Thomson Turntable</b> Model MT-18PC, with PC Link
152	56	<b>Boxes of (10) Sony CD-R 70Mb CDs</b>
153	1	<b>AWA Turntable</b> Model E-6880, with Cassette, CD Player & Recorder
154	1	<b>Elitebuilt Metal Filing Cabinet</b> with (4) Drawers, 460 x 610 x 1320mm
155	1	<b>Metal Filing Cabinet</b> with (3) Drawers, Lockable, Note: No Key, 450 x 620 x 1020mm

LOT NO	QTY	DETAILS
156	1	<b>Godfrey Metal Filing Cabinet</b> with (2) Drawers, Lockable with Key
157	2	<b>Boxes of Assorted Ring Binder Folders</b>
158	1	<b>Staples Paper Shredder</b> Model SPL-DXC5U
159	1	<b>Fellowes Paper Cutter</b> with Ruler, Model CRC54370
160	2	<b>Lexmark Multifunction Centres</b> Model 502734946C66V
161	1	<b>Fellowes Paper Shredder</b> Model P-35C
162	1	<b>Godfrey Metal Filing Cabinet</b> with (2) Drawers, Lockable with Key
163	1	<b>Timber Laminate Filing Cabinet</b> with (2) Drawers, on Castors, Lockable with Key, 490 x 490 x 635mm
164	1	<b>Qty of (2) Office Items</b> Brother Printer Model HL-1110, Marbig Rotary Business Card File
165	1	<b>Samsonite Brief Case</b> with Combination Lock
166	2	<b>Solid Timber Hallway Tables</b> 800 x 400 x 750mm
167	1	<b>Qty of Assorted CDs</b> incl. Ocean Secrets Songs of the Earth, The Body Guard & Other Movie Hits, The James Last Collection
168	2	<b>Boxes of Assorted DVDs</b> incl. Petticoat Junction, Shrek, Blade, Full Metal Jacket, etc
169	1	<b>Timber Laminate Table</b> with Metal Legs, 760 x 380 x 730mm
170	2	<b>Chrome Signage Stands</b> incl. Letters, 1200 x 700mm
171	1	<b>Vision Chart Whiteboard</b> with Adjustable Stand
171.1	1	<b>Qty of (2) Display Racks</b> 2200 x 920mm
172	1	<b>Timber Framed Cork Board</b> 580 x 890mm
173	1	<b>Whiteboards</b> 1190 x 900mm

LOT NO	QTY	DETAILS
174	1	<b>Penrite Whiteboard</b> 1200 x 900mm
175	1	<b>Dalite Fast Fold Projector Screen</b> with Front & Rear Protection Screen, Complete Trussing Kit, Complete Drape Kit Carry Case, (2) Carry Cases, 10 x 7.5 Ft
176		<b>Vacant Lot</b>
177	1	<b>Dalite Fast Fold Projector Screen</b> with Front & Rear Protection Screen, Complete Trussing Kit, Complete Drape Kit Carry Case, (2) Carry Cases, 8 x 6 Ft
178	2	<b>Stumpfi Kits Frame &amp; Screen Only</b> in Heavy Duty Case, 12 x 9 Mtrs
179	1	<b>Gas Lift Stool</b> on Castors
180	1	<b>Office Chair</b> Gas Lift on Castors, Fawn Fabric Seat & Back
181	5	<b>Office Chairs</b> Gas Lift, on Castors, Fabric Seat & Back
182	1	<b>Office Chair</b> on Castors, Fabric Seat & Back
183	4	<b>Office Chairs</b> Gas Lift, on Castors, Fabric Seat & Back, Arm Rest
184	3	<b>Office Chairs</b> Gas Lift, on Castors, Green Fabric Seat & Back
185	7	<b>Office Chairs</b> Gas Lift, on Castors, Beige Fabric Seat & Back
186	1	<b>Zhuoyuan Trena 9D Interactive Cinema Simulator</b> 9 Seats, 15Amp Power, (2) Epson Video Monitors, Splitters, 3D Glasses, AMPL Air Cooler, Speakers, Compressor, Blower, Smoke Machine, Snow Machine, Bubble Machine, Lighting Machine, Monitor, Computer System, Sound System, Effects System, Metal Screen, on Castors, Note: Requires 3 x 6 Mtrs of Space to Run
187	10	<b>Net Curtains</b> 1050 x 2150mm
188	1	<b>Plastic Moulded Crocodile Figurine</b> 2.2 Mtrs
189	1	<b>Office Room Divider</b> 1500 x 1240mm
190	1	<b>Waist to Thigh Mannequin</b>
191	3	<b>Neck to Thigh Mannequins</b>
192	2	<b>Torso Mannequins</b>

LOT NO	QTY	DETAILS
193	1	<b>Casino Game Set</b> incl. Roulette Wheel, Black Jack Table, Cards & Chips
194	6	<b>Solid Timber Entertainment Units</b> with Granite Top, (3) Cupboard Doors & (2) Drawers, 1750 x 615 x 1100mm
195	1	<b>Plastic Toy Childrens Renault F1 Ride On</b>
196	1	<b>Retro Style Timber Laminate Desk</b> with (2) Drawers, 900 x 430 x 720mm
197	2	<b>Retro Style Timber Laminate Bedside Tables</b> with Drawer & Under Shelf, 440 x 350 x 690mm
198	1	<b>Qty of (13) Assorted DVDs</b> incl. South Park, Flash Gordon, The Night of the Hunter, etc
199	9	<b>Solid Timber Outdoor Tables</b> with Umbrella Hole, 980 x 950 x 730mm
200	1	<b>Qty of Assorted Handbags Purses &amp; Earrings</b> Box Contents
201	1	<b>Qty of Assorted Homeware Items</b> incl. Plates, Bowls, Cups, Jugs, etc, Box Contents
202	2	<b>Boxes of Assorted Homeware Items</b> incl. Books, Magazines, etc
203	1	<b>Timber Laminate Dresser</b> with Mirror & Drawer, 880 x 460 x 770mm
204	15	<b>Assorted Reef Artworks</b> Timber Frame, 1200 x 960mm
205	2	<b>Boxes of Assorted Jewellery Display Items</b> incl. Jewellery Boxes
206	1	<b>Qty of Assorted Homeware Items</b> incl. Cameras, Splayds Fork Set, Vivitar Video Compact Light, Vintage Style Hand Mirror
207	1	<b>Qty of Assorted Records</b> Box Contents
208	1	<b>Qty of Assorted Homeware Items</b> Vase, Plates, Bowls, Milk Jugs, etc
209	2	<b>Solid Timber Bench Seats</b> 1740 x 400 x 460mm
210	1	<b>Qty of (20) Assorted Caps</b>
211	1	<b>Timber Laminate Mobile Display Stand</b> on Castors, with Glass Adjustable Shelves, 1800 x 600 x 136mm
212	1	<b>Timber Laminate Wardrobe</b> with Overhead Cupboard & (2) Doors, 120 x 620 x 1900mm

LOT NO	QTY	DETAILS
213	1	<b>Three Pce Lounge</b> with 3 Seater Lounge & (2) Recliner Arm Chairs, Fawn Microfibre Fabric
214	1	<b>Qty of Assorted LP Records</b> incl. Jerry Vale, Juice Newton, Anne Murray
215	1	<b>Timber Cupboard</b> with (2) Doors, Glass Top, (2) Shelves, 800 x 400 x 820mm
216	1	<b>Set of Timber Retro Style Drawers</b> with (3) Drawers, 830 x 430 x 810mm
217	1	<b>Qty of (18) Assorted Childrens Hats</b>
218	1	<b>Timber Laminate Hall Stand</b> with Drawer & Under Shelf, 1600 x 370 x 710mm
219	1	<b>Dyson V6 Slim Original Cordless Vacuum Cleaner</b> Note: No Charger
220	1	<b>Timber Laminate Bedside Table</b> with (2) Drawers, 620 x 400 x 610mm
221	2	<b>Stanley Meccano Packs</b> incl. Racing Car Double Pack & Construction Double Pack
222	1	<b>Qty of (4) Assorted Games</b> incl. Party Roulette, Bingo & Card Shufflers
223	2	<b>Cane Tables</b> with Under Shelf & Tiled Top, 600 x 600 x 570mm
224	1	<b>Timber Laminate Coffee Table</b> on Castors, 620 x 360 x 450mm
225	1	<b>Qty of (9) Assorted Hats</b> incl. Wide Brim & Caps
226	1	<b>Egyptian Style Carpet Rug</b> 900 x 120mm
227	6	<b>Three Seater Lounges</b> with Single Arm Rest & Ottoman
228	1	<b>Qty of (65) Assorted Caps</b>
229	4	<b>Assorted Indian Style Hallway Runners</b> 1840 x 630mm
230	1	<b>Three Seater Lounge</b> with Chrome Legs
231	1	<b>Plush Easter Bunny</b> with Coca Cola Shirt
232	4	<b>Single Lounge Chairs</b> Blue Fabric Cushion, Metal Legs

LOT NO	QTY	DETAILS
233	1	<b>Qty of (4) Assorted Bags</b> incl. Suitcase, Overnight Bag, Backpack & Computer Bag
234	1	<b>Bellow Style Turkish Red Rug</b> 3880 x 800mm
235	2	<b>Two Seater Lounges</b> with Metal Legs, Blue Fabric & Fawn Fabric Cover
236	2	<b>Two Seater Lounges</b> with Metal Legs, Blue Fabric & Navy/White Throws
237	1	<b>Circular Copper Wall Hanging</b> Approx. 900mm
238	1	<b>Qty of Approx. (25) Assorted Fabric Beach Bags Box</b> Contents
239	1	<b>Dr WF White Timber Surgery Wall Hanging Sign</b> 760 x 180mm
240	7	<b>Boxes of Assorted Handmade Timber Plaques</b> incl. Mickey Mouse, Clowns, Monkeys, Kola Bears
241	2	<b>Qtys of Assorted Sarongs</b> Bag Contents
242	17	<b>Qtys of Assorted Thongs</b> Various Sizes & Colours, Bag Contents
243	1	<b>Qty of (8) Assorted Backpacks</b>
244		Vacant Lot 244-245
246	1	<b>Bedroom Full Length Mirror</b> with Metal Frame, 360 x 1500mm
247	1	<b>Blue Ceramic Base Lamp</b> with Blue/Green/Pink Shade
248		Vacant Lot
249	1	<b>2 Pce Timber Laminate Display Shop Stand</b> 1200 x 1200 x 450mm & 800 x 800 x 390mm
250	2	<b>Timber Framed Chairs</b> with Timber Seat & Back
251	2	<b>Vintage Style Brazilian Mahogany Solid Hand Carved Balloon Back Chairs</b> with Hand Tapestry Seat
252	1	<b>Solid Timber Bedside Table</b> with (2) Drawers, 600 x 430 x 440mm
253	1	<b>Mont Marte Artists Easel</b> with Assorted Brushes & Oil Paints



LOT NO	QTY	DETAILS
254	1	<b>Qty of (2) Assorted Restorable Timber Items</b> incl. Foot Stool & Magazine Rack
255	1	<b>Qty of (5) Assorted Picture Frames</b> Various Sizes
256	1	<b>Horn Monarch Timber Laminate Foldout Sewing Cabinet</b> with (2) Cupboards, 950 x 440 x 760mm
257	2	<b>Assorted Round Glass &amp; Silver Hanging Lantern Candle Holders</b>
258	2	<b>Home Maker Lamps</b> with Red Shades
259	1	<b>Timber Swivel Bar Stool</b> with Timber Back & Cushion Seat
260	1	<b>Cane Rocking Chair</b>
261	1	<b>VB Recliner Chair</b> Leather Look with Cup Holders & Side Pocket
262	1	<b>Timber Round Outdoor Table</b> 1270 x 750mm
263	1	<b>Pair of Adidas Skate Shoes</b> Size 8
264	1	<b>Chinese Ornamental Wall Fan</b>
265	1	<b>Pair of Ugg Jumbo Ugg Boots</b> Size 9, Made in Australia
266	1	<b>Qty of (5) Assorted Indigenous Artifacts</b> incl. New Zealand Tiki, Hand Carved Figurine & PNG Plaque
267	1	<b>Qty of (5) Assorted Homeware Items</b> incl. Buddhas, Asian Style Plaque, Assorted Doilies
268	1	<b>Assorted Pigalle Mexican Style Hats</b>
269	1	<b>Seven Pce Timber Dining Setting</b> incl. Extendable Table, 2420 x 510mm & (6) Timber Chairs with Fabric Seat & Back
270	1	<b>Ironman Marvel Comics Canvas Print "The All New Ironman"</b> by McDonnell & Mitchell, 500 x 700mm
271	1	<b>Qty of (2) Assorted Canvas Prints</b> incl. Buddha & Bamboo, 500 x 500mm
272	1	<b>Four Pce Timber &amp; Mother of Pearl Inlay Wall Art</b> 190 x 495mm
273	1	<b>Timber Framed Motorbike Cards of Yesteryear Collectables</b> 390 x 400mm
274	1	<b>Cane Vase</b> with Artificial Branches, 420 x 420 x 1520mm

LOT NO	QTY	DETAILS
275	1	<b>Qty of (12) Assorted Ladies Wide Brim Hats</b>
276	1	<b>Five Pce Timber Dining Setting</b> incl. Round Table & (4) Dining Chairs with Cushion Seat, 1010 x 780mm
277	1	<b>Timber Laminate Hallway Table</b> 1350 x 450 x 670mm
278	1	<b>Acoustic Guitar</b> Note: 1 Sing Missing
279	1	<b>Solid Timber Brazilian Mahogany Table</b> with Hand Carved Turned Pedestal Base, 1040 x 580 x 760mm
280	1	<b>Qty of Assorted Japanese Items</b> incl. Stress Balls & Teacups
281	1	<b>Gas Lift Bar Stool</b>
282	1	<b>Retro Style Timber Hand Carved Dolls Cradle</b> with (2) Porcelain Dolls
283	1	<b>Richard Wagner Der Ring Des Nibelungen Box Records Set</b> incl. John Culshaw Ring Resounding Book & (4) Records & Intro Record
284	1	<b>Qty of (4) Assorted Animal Metal Figurines</b> incl. Owl, Pig, Goanna & Ladybird
285	4	<b>Indian Style Assorted Woven Mats</b> 1660 x 930mm
286	1	<b>Qty of (2) Timber Wall Hanging Buddha Ornaments</b>
287	12	<b>Solid Timber Coffee Tables</b> 850 x 510 x 400mm
288	1	<b>Brass Indian Design Wall Hanging Artwork</b>
289	1	<b>Dyson Animal Digital Slim Cordless Vacuum Cleaner</b>
290	1	<b>Timber Coffee Table</b> 1060 x 460 x 450mm
291	1	<b>Timber Coffee Table</b> 980 x 490 x 460mm
292	1	<b>Qty of (2) Asian Style Pictures</b> with Shell Inlay, 200 x 500mm
293	1	<b>Qty of (125) Assorted Hats</b> incl. Australian, Cairns, Perth, Great Barrier Reef Caps, Wide Brim Hats with Corks
294	1	<b>Three Seater Lounge</b> Red Corduroy Fabric
295	1	<b>Seven Pce Timber Dining Setting</b> incl. Table & (6) Highback Chairs with Blue Fabric Seat, 1880 x 1000 x 730mm

LOT NO	QTY	DETAILS
296	2	<b>Table Lamps</b>
297	1	<b>Timber Framed Indian Tapestry</b>
298	1	<b>Qty of (2) Assorted Timber Native American Artwork</b> 445 x 545mm & 455 x 560mm
299	1	<b>Timber Cabinet</b> with (2) Sets of Glass Doors & Timber Doors, incl. Shelves & Light, 880 x 420 x 2025mm
300	1	<b>Timber Cabinet</b> with (3) Cupboards, Shelves, Mirrored Back, with Light, 900 x 430 x 2030mm
301	1	<b>Seven Pce Dining Setting</b> incl. Glass Top Table (4) Solid Timber Pedestal Legs & (6) Black Leather Chairs with Chrome Base, 2400 x 1000 x 760mm
302	1	<b>Qty of (6) Assorted Fish Prints</b> in Frames
303	1	<b>Qty of (2) Office Items</b> incl. Chrome & Black Tempered Glass Office Desk, with (3) Shelves, Slideout Glass Tray, Black & Metal Foldup Chair, 1100 x 600 x 780mm
304	1	<b>Qty of (3) Glassware Items</b> incl. (2) Platter & Bowl
305	1	<b>Hand Carved Hand Painted Timber Mask</b>
306	32	<b>Timber Grain Bedside Tables</b> with Drawer, 600 x 500 x 510mm
307		<b>Vacant Lot</b>
308	1	<b>Brass &amp; Green Glass Desk Lamp</b>
309	1	<b>Solid Timber Asian Style Hand Carved Trunk</b> with Glass Inlay & Brass Lock, 1060 x 520 x 730mm
310	1	<b>Vintage Style Restorable Cedar Timber Chair</b>
311	1	<b>Timber Bentwood Chair</b>
312	5	<b>Metal Round Dining Chairs</b> with High Metal Back
313	1	<b>Mont Marte Art Easel</b>
314	1	<b>Timber Laminate Chest of Drawers</b> with (7) Drawers, Brass Handles, 450 x 390 x 1240mm
315	2	<b>Timber Framed PNG Paintings</b> by Gigs Wiena 2001, 410 x 670mm
316	1	<b>Super Dream Bedding Double Mattress</b>
317	2	<b>Super Dream Bedding Double Mattresses</b>

LOT NO	QTY	DETAILS
318	1	<b>Timber Laminate Cupboard</b> with (2) Shelves, 400 x 500 x 720mm
319	1	<b>Pool Table</b> incl. Pool Cues, Balls & Scoreboard, 1130 x 2200 x 850mm
320	1	<b>Futon Bed</b>
321	1	<b>Qty of (39) Stanton Caps</b>
322	1	<b>Nest of (3) Timber Coffee Tables</b> 600 x 430 x 540mm
323	1	<b>Timber Chest</b> 700 x 360 x 360mm
324	1	<b>Nest of (3) Timber Laminate Coffee Tables</b> 560 x 360 x 540mm
325	1	<b>Solid Timber Square Coffee Table</b> 1100 x 1100 x 400mm
326	1	<b>The Rain Stick Pack</b> incl. Rain Stick & Rain Stick Pack Book
327	1	<b>Egyptian Style Walking Cane</b> with Brass Head
328	1	<b>Chess Set</b> with Chinese Ceramic Pieces
329	1	<b>Qty of (3) Assorted Glass Paper Weights</b> incl. New York, Statue of Liberty, etc
330	1	<b>Rainbow Wedding/Ball Gown</b> in Carry Bag
331	1	<b>Qty of Assorted Homeware Items</b> incl. Ceramic Vase, Ceramic Sugar Bowl, Glass Paper Weights, Box Contents
332	1	<b>Timber Laminate Table</b> 1200 x 800 x 740mm
333	1	<b>Timber White Painted Chair</b>
334	1	<b>Timber Laminate Corner Shelf</b> with (5) Shelves, Leather Inlay, 540 x 360 x 1320mm
335	1	<b>Michael Hill Branded Mens Gold Watch (As New)</b> 50 Mtr Water Resistant, in Box
336	1	<b>Gold Necklace</b> with Boomerang Pendant
337	1	<b>Qty of (2) Assorted Jewellery Items</b> incl. Necklace & Head Piece

LOT NO	QTY	DETAILS
338	1	<b>Gucci Branded Watch</b> Water Resistant
339	1	<b>Royal Doulton Crystal Clock</b>
340	1	<b>Gold Tiger Ring</b>
341	1	<b>Nixon Branded Quartz Watch (As New)</b> 50M Water Resistant
342	1	<b>Pair of 9ct Gold Ladies Hoop Earrings</b>
343	1	<b>Skull Watch</b>
344	1	<b>Smart Watch (As New)</b> with Charger
345	1	<b>Casio Branded G Shock Mens Watch</b> 100 Mtr Water Resistant
346	1	<b>Michael Hill Branded Mens Gold Watch (As New)</b> with Diamantes, 100 Mtr Water Resistant, in Box
347	1	<b>Gold Necklace</b> with Cubic Zirconia Pendant, in Box
348	1	<b>Sponge Bob Square Pants Childrens Watch</b>
349	1	<b>Stainless Steel Skateboard Pendant "Lords Prey"</b> on Chain
350	1	<b>Pair of Pewter Earrings</b>
351	1	<b>Sterling Silver Bracelet</b> Made in Italy
352	1	<b>Silver Bracelet</b> with Assorted Beads
353	1	<b>Fossil Branded Authentic Original 30th Anniversary Quartz Watch</b> with Leather Band
354	1	<b>Silver Bracelet</b> with Assorted Beads
355	1	<b>Quartz Pocket Watch</b> in Pouch
356	1	<b>Mamiya 8x30 Binoculars</b> Field 7.5, in Carry Case
357	2	<b>Assorted Leather Multitools</b> incl. Leatherman Wave & Leatherman Blast
358	1	<b>Gentleman Hardware Trademark Multitool</b>
359	1	<b>Olympus Digital Camera</b> Model FE-20, 8Mp, Charger & Cables, in Carry Case

LOT NO	QTY	DETAILS
360	1	<b>Stanley Multitool</b> in Pouch
361	1	<b>Pair of Polar Polarised Italian Sunglasses</b> incl. Maui Jim Case
362	1	<b>Ladies Black Wallets</b>
363	2	<b>Brown Leather Belts</b> incl. Cowboy & River Leather Belts
364		<b>Vacant Lot</b>
365	1	<b>World Expo 2010 Shanghai Participating Nations Pavilions Commemorative (15) Medallion Set</b> incl. Collection Certificate, in Box
366	1	<b>Qty of (3) Assorted WWI Silver Macquarie Mint Australian Artillery Medallions</b>
367	1	<b>Qty of (3) Assorted Cast Iron Wall Plaques</b> incl. No Junk Mail
368	1	<b>Framed Map of North Queensland</b> 360 x 760mm
369	1	<b>Timber Framed Chinese Silk Dragon Picture</b> 1210 x 600mm
370	1	<b>PNG Timber Hand Carved Painted Gable Mask</b> with Pigs Teeth & Shell Inlay
371	1	<b>Timber Framed Red Gong Bamboo Print</b> 700 x 700mm
372	1	<b>Rod &amp; Reel Combo</b> incl. Shakespeare Trawling Reel on Senator Rod
373	1	<b>Rod &amp; Reel Combo</b> Penn Ambush 8000 Reel with Braid Line on Sambo Vantage XA Rod
374	1	<b>Cane &amp; Ceramic Demijohn</b> Note: Slight Damage
375	1	<b>Lord of the Rings Excalibur Sword</b>
376	1	<b>Trevor James TJ10x2 Flute</b> in Carry Case
377		<b>Vacant Lot</b>
378	1	<b>Qty of (2) Assorted Bongo Drums</b> incl. Timber & Pig Skin Double Bongo Drum & Native Timber Bongo Drum
379	1	<b>Bonplay Electric Guitar</b>
380	1	<b>DJ Embe Amazing Drumming Monkey Drum</b>

LOT NO	QTY	DETAILS
381	1	<b>Aboriginal Canvas Dot Painting</b> 460 x 610mm
382	1	<b>Timber Hand Carved Painted Buddha Head</b>
383	1	<b>Hand Woven PNG Yam Mask</b>
384	2	<b>Thales Mobile Mappers</b> Model Mapper 02 incl. Chargers & Mounting Brackets
385	1	<b>Harman Kardon Speaker</b> Note: No Charger
386	1	<b>Frankie Heidecke Rolleicord Vintage Style Camera</b> Made in Germany, with Leather Case
387	1	<b>Tasco Zip 7x50 Binoculars</b> in Carry Bag
388	1	<b>Sony Super Steady Shot Camera</b> Model DSC-H2, with Zoom Lense, 2Gb SD Card, in Carry Bag
389	1	<b>Nokia Navi 5230 Mobile Phone</b> with Charger & Car Charger, Unlocked
390	1	<b>Jabra Elite Sport Bluetooth Headphones</b> in Carry Case, Note: No Charger
391	1	<b>Sound Republik Sports Bluetooth Headphones</b>
392	1	<b>Apple 8Gb iPod Touch</b> with Charger & Case
393	1	<b>Pair of Kathmandu Binoculars</b> in Case
394	1	<b>Panasonic Lumix Digital Camera</b> Model DMC-FX3, 6Mp, Note: No Charger
395	1	<b>4K Ultra HD Action Camera</b> with Case
396	1	<b>Nikon Coolpix Digital Camera</b> 13.2Mp, Waterproof 10 Mtr, Note: No Charger
397	1	<b>Qty of Assorted iDigital Video Cameras</b> incl. (2) iDigital Cameras & Case
398	1	<b>Home &amp; Co Sport Hook Earphones</b>
399	1	<b>Canon Powershot Pro 1 Digital Camera</b> Model PC1057, 8Mp, Zoom Lense, Remote Control, Note: No Charger
400	1	<b>Front Row Home Full HD Wearable Camera (As New)</b> to Suit iPhone, in Box
401	1	<b>Jabra Sports Wireless Headphones (As New)</b>

LOT NO	QTY	DETAILS
402	1	Home & Co Bluetooth Earphones (as New)
403	1	iPhone 4 Mobile Phone Unlocked, with Charger
404	1	iTech 3D Virtual Reality Headset (As New) for Smart Phones
405	1	Kson Telescope with Accessories incl. Super Ortho 24mm Lense, on Timber Stand
406	1	Timber Framed Chinese Symbols Picture 330 x 500 x 30mm
407	1	Vintage Style Singer Sewing Machine Model EJ668168, with Timber Laminate Cover
408	1	Scandalli Accordion in Timber Carry Case
409	1	Timber Brazilian Mahogany Hallway Table with (2) Legs, 680 x 360 x 740mm
410	1	Timber Amoco Fuel Bowser Cupboard with (3) Shelves, 180 x 190 x 710mm
411	1	Gardeners Choice Buddha Head Ornament
412	2	Green Glass Vases 400mm
413	1	Brown Vase 500mm
414	1	Home & Co Black & Gold Desk Lamp
415	1	Special Edition 1990 Lamborghini Diablo Diecast Car
416	1	Leadlight Model Glass Sail Boat Model
417	1	Ceramic Buddha
418	1	Aqua Meter Compass Made by Roseland N.J, USA
419	1	Brass & Copper Cupid Figurine
420	1	Giant Conch Shell
421	1	Gumball Dispensing Machine 280mm
422	1	Timber XXXX Bitter Bottle Opener 130 x 350mm
423	1	Turret Hawkeye Rifle Scope & Mounts
424	1	Qty of (5) Assorted Delprado Collectables



LOT NO	QTY	DETAILS
425	1	Fabric Afghanistan Hat
426	1	Qty of (2) Assorted Brass Buddha Ornaments
427	1	Model Yacht
428	1	Qty of (2) Crystal Item incl. Bowl & Vase
429	1	Carac of Japan Hand Held Floating Compass in Box
430	1	Qty of (3) Assorted Bells incl. Dragon & Love Heart
431	1	Beach Sound AM/FM Radio (as New) MP3 Compatible
432	2	Glass Wine Decanters
433	1	Qty of (2) Concrete Elephant Figurines
434	1	Mortar & Pestle
435	1	Qty of (4) Assorted Buddha Ornaments
436	1	Vintage Style Dark Stained Timber Writing Case with 3 Compartments, 300 x 260 x 110mm
437	1	Yuma 2 C Trimble incl. Windows 7 Pro, 1.6 Ghz Processor, 4 Gb Ram/ 64 Gb SSD, 2-4 Mtr GPS, Stylus & Tether International AC Charger, Batteries & Screen Protectors
438	1	Trimble Yuma 2 Rugged Tablet Computer incl. Charger & Instruction Manual in Pelican 1500 Case
439	1	FPV Remote Control Car with Camera Mount
440	1	Timber Carved Elephant Flower Wall Plaque 610 x 530mm
441	7	LG Solar Dom Combination Convention/Grill/ Microwave Ovens Model MP-9485SA
442	1	Homemaker Microwave Oven Model EM720CPI
443	1	Panasonic Microwave Model NN-ST34HW
444	1	LG Microwave Oven Model MS-102XCE
445	1	Williams Diamond Commercial Upright Refrigerator Model HD1SDCB-000

LOT NO	QTY	DETAILS
446	1	<b>Pastorkalt Commercial Refrigerated Cabinet</b> with (3) Shelves & Pull Down Blind, 2580 x 820 x 1580mm
447	1	<b>Fisher &amp; Paykel Chest Freezer</b> Model H701, 698L
448	1	<b>Heller 190L Chest Freezer</b> Model FRCH190, on Stainless Steel Trolley
449	1	<b>Westinghouse Chest Freezer</b> Model WCM1500WA, 150 Ltr
450	1	<b>Fisher &amp; Paykel Bar Fridge</b> Model P120, 115 Ltr
451	1	<b>Rohs Stainless Steel Under Bench Refrigerator</b> Model SS1, 145 Ltrs
452		<b>Liebherr Chest Freezer</b> 170 Litre, Type No.: 2020833
453	1	<b>Williams Stainless Steel 2 Door Commercial Refrigerator</b> with (5) Shelves
454	1	<b>GVA Upright Freezer</b> Model WS-180F, 190L Capacity
455	1	<b>Simpson 4Kg Washing Machine</b> Model 36P428E*03
456	1	<b>Fisher &amp; Paykel 2 Drawer Dishwasher</b> Model UAP762741 incl. Manual & Accessories
457	1	<b>Hobart Ecomax 500 Commercial Dishwasher</b> Model ECOMAX500915561, 570 x 610 x 820mm
458	1	<b>Viking Commercial Mincer</b> with Attachments, 11Amp, 5.5Kw, 415V
459	3	<b>Stainless Steel Bench Mounted Double Shelf Units</b> 1520 x 300 x 810mm
460	1	<b>Stainless Bench</b> with Under Shelf, on Castors, 1200 x 600 x 880mm
461	1	<b>Cookwell Pizza Maker (As New)</b> Model HLMXJ-6K205
462	1	<b>Unimac Commercial Washing Machine</b> 18.8 Amps, Model UXU100PNHCU1E01
463	1	<b>Roband Grill Station</b> Model GSA610S, 230V, 50Hz
464	1	<b>Moretti Stone Base Electric Pizza Oven</b> Single Door, incl. Spare Element

LOT NO	QTY	DETAILS
465	1	<b>Skope Stainless Steel 3 Door Sandwich Bar Refrigerator</b> Model PG400PREP-2-3, 800 x 700 x 880mm
466	1	<b>Pastorfrigo Refrigerated Curved Glass Display Cabinet</b> Model AVS-V30, with (3) Doors, Made in Italy, 3050 x 1010 x 1310mm
467	3	<b>Robinhood Metal Foldout Ironing Board Cabinets</b> Model I3100
468	1	<b>Lifetime Foldup Table</b> Model 80093, on Castors, 1830 x 750 x 790mm
469	1	<b>Qty of Assorted Cafe Items</b> incl. Cutlery, Utensils, Glasses, Wine Glasses, etc
470	1	<b>Solid Timber Rectangle Table</b> with (2) Round Metal Bases, 1785 x 700 x 780mm
471	16	<b>Timber Cafe Chairs</b> with Timber Seat & Back
472	9	<b>12 Cup Muffin Tins</b>
473	1	<b>Ronson Counter Top Toaster Oven</b> Model 9048
474	1	<b>Russell Hobbs Portable Grill</b> Model RHTOV20
475	1	<b>Qty of (2) Ceramic Bowls</b> with Lids
476	1	<b>Breville Bakers Bread Maker</b> Model BBM100
477	1	<b>Rheem Filtered Boiling/Cold Instant Water System</b>
478	7	<b>Stainless Steel Half Bain Marie Trays</b> with Lids, 320 x 260 x 90mm
479	3	<b>Stainless Steel Perforated Steaming Half Bain Marie Trays</b> 260 x 330 x 17mm
480	4	<b>Black Plastic Bain Marie Trays</b> 170 x 320 x Assorted Depths
481	7	<b>Stainless Steel Bain Marie Trays</b> 170 x 320 x 100mm
482	41	<b>Stainless Steel Half Bain Marie Trays</b> 260 x 320 x 60mm
483	4	<b>Aluminium Baking Trays</b> 450 x 650 x 30mm
484	3	<b>Silky Oak Cafe Tables</b> 800 x 800 x 740mm

LOT NO	QTY	DETAILS
485	8	<b>Stainless Steel Half Bain Marie Trays</b> 260 x 320 x 100mm
486	1	<b>Timber Bench</b> 2100 x 1130 x 930mm
487	1	<b>Qty of Assorted Bar Items</b> incl. Ashtrays, Melbourne Demons Football Cup & Hipflask
488	16	<b>Stainless Steel Perforated Steaming Half Bain Marie Trays</b> 320 x 530 x 65mm
489	11	<b>Stainless Steel Full Bain Marie Trays</b> 320 x 520 x 100mm
490	38	<b>Stainless Steel Full Bain Marie Trays</b> 320 x 530 x 20mm
491	76	<b>Stainless Steel Full Bain Marie Trays</b> 320 x 530 x 60mm
492	3	<b>Assorted Metal Umbrella Stands</b>
493	35	<b>Black Plastic Half Bain Marie Trays</b> 320 x 260mm Assorted Depths
494	14	<b>Black Plastic Full Size Bain Marie Trays</b> 320 x 520 x 90mm
495	9	<b>Black Plastic Bain Marie Trays</b> 520 x 320 x 150mm
496	1	<b>Outdoor Cafe Umbrella</b> with Metal Stand
497	1	<b>Stainless Steel L Shaped Benchtop</b> with Sink & Stainless Steel Splash Back, Under Shelf Fridge Compartment, incl. Brackets, 2180 x 2100mm
498	4	<b>Metal Framed Windbreak Barriers</b> 2470 x 820mm
499	1	<b>Metal Framed Windbreak Barrier</b> 1500 x 820mm
500	1	<b>Tooheys Lite Beer Sign</b>
501	1	<b>Hobart Commercial Food Processor</b> Model FB41
502	1	<b>Roband Conveyor Toaster</b> Model TCR16
503	1	<b>Mobile Bench</b> on Castors, Metal Frame, Solid Timber Top, 1000 x 645 x 1100mm
504	1	<b>Olsent Fan</b>

LOT NO	QTY	DETAILS
505	1	<b>Enclosed Commercial Rubbish Bin</b> 600 x 600 x 1015mm
506	1	<b>Home Collections Floor Fan</b> 500mm Diameter, Model FE45-C1
507	8	<b>Kitchen Bar Stools</b> with Metal Frame, Bamboo Bucket Seat
508	4	<b>Dining Chairs</b> Metal Base, Timber Seat & Back
509	18	<b>Timber &amp; Metal Cafe Chairs</b> Timber Seat & Back
510	3	<b>Cafe Tables</b> Timber Laminate Top with Metal Fold Down Base, 600 x 600 x 740mm
511	1	<b>Suzumo Sushi Machine</b> Model SSG-GTA
512	1	<b>Suzumo Robot Sushi Machine</b> Model SVR-NNY
513	4	<b>Stainless Steel Shelf Brackets</b>
514	1	<b>Stainless Steel Shelf</b> with (2) Brackets, 850 x 300mm
515	1	<b>Stainless Steel L Shaped Shelf</b> with (2) Shelves, Note: No Top, 550 x 880mm
516	1	<b>Stainless Steel Benchtop</b> Note: No Frame, 940 x 720mm
517	1	<b>Stainless Steel Shelf</b> with (4) Brackets, 2000 x 500mm
518	1	<b>Metal Foldable Bridge Chair</b>
519	3	<b>Assorted Cafe Umbrellas</b>
520	1	<b>Timber Top Cafe Table</b> with Metal Base, 700 x 700 x 760mm
521	9	<b>Cafe Ideas Square Solid Timber Top Tables</b> with Round Metal Base, 700 x 700 x 780mm
522	5	<b>Espresso Essential Automatic Coffee Machines</b> Note: Only 2 Keys
523	5	<b>Espresso Essential Automatic Coffee Machines</b> incl. Cabinets to Suit 900 x 410mm, Note: Only 2 Keys
524	3	<b>Refrigerated Food Vending Machines</b> Note: Only Keys for 2 Machines, 1080 x 790 x 1960mm

LOT NO	QTY	DETAILS
525	2	<b>Food &amp; Drinks Vending Machines</b> Note: Parts Only, 1080 x 790 x 1960mm
526	4	<b>Round Stainless Steel Cafe Tables</b> with Metal Base, 800mm Diameter
527	1	<b>Stainless Steel Hand Rail</b> 1400 x 900mm
528	5	<b>Electrolux Commercial Convection Ovens</b> Model FCE102, on Castors, 890 x 1220 x 1640mm
529	3	<b>Zanussi Commercial Convection Oven</b> Stainless Steel, 3 Phase, on Castors, 880 x 1210 x 1620mm
530	1	<b>Qty of (2) Homeware Items</b> incl. Capino Espresso Tosia System Coffee Pod Machine & Chocolate Fondue Fountain
531	1	<b>Viewtek 8.8L Hot Water Urn</b> Model HWU088L
532	1	<b>Aluminium Pot</b> with Lid, 340 x 310mm
533	2	<b>MSF Raburn Commercial Dishwasher Cutlery Trays</b>
534	15	<b>Boxes of Huhtamaki Candy Strip Cold Cups</b> Model DEP24, 500 Cups Per Box
535	1	<b>Aluminium Pot</b> Note: No Lid, 190 x 230mm
536	1	<b>Aluminium Pot</b> Note: No Lid, 230 x 250mm
537	1	<b>Aluminium Pot</b> Note: No Lid, 240 x 270mm
538	6	<b>Bravilor Bonamat Glass Coffee Jugs</b>
539	1	<b>Packmatic Electric Sealer</b>
540	1	<b>BKCO Prudence Dinner Set</b>
541	1	<b>Qty of (3) Assorted Asian Style Brown Ceramic Bowls</b>
542	1	<b>Qty of Assorted Homeware Items</b> incl. Cookie Jar, Square Bowls, Glasses, Plastic Bowls & Jugs
543	1	<b>Qty of (10) Glasses Rack</b>
544	2	<b>Willow 44L Laundry Baskets</b>
545	12	<b>Caution Wet Floor Signs</b>
546	3	<b>Cleaning in Progress Signs</b>

LOT NO	QTY	DETAILS
547	8	<b>Brady Wet Floor Signs</b> Model 842041
548	1	<b>Approx. (400) Assorted Round Rubbish Bins</b>
549	1	<b>Leone BV 2 Group Coffee Machine</b> Made in Italy
550	1	<b>DES INT 2 Group Coffee Machine</b> Model SAE.2, Made in Italy
551	1	<b>Douwe Egberts Automatic Coffee Dispenser Machine</b> Note: Parts Only
552	1	<b>Douwe Egbert Automatic Coffee Vending Machine</b> Model EXCLLNCDOP2DE, Made in Italy, Note: Parts Missing
553	61	<b>Oates Plastic Rubbish Bins</b>
554	1	<b>DeLonghi Coffee Pod Machine</b> Model EM680.M
555	1	<b>Saeco Pod Coffee Machine</b> Model MIO, incl. Manual
556	1	<b>Qty of Assorted Homeware Items</b> incl. Caffitaly Espresso Pod Coffee Maker with Latte Milk Frother, Stainless Steel Jug & Coffee Pod Holder, (2) Glass Latte Cups
557	42	<b>Assorted Grey Plastic Rubbish Bins</b>
558	3	<b>Plastic Tubs of Assorted Kitchen Utensils</b>
559	17	<b>Assorted Heavy Duty Plastic Catering Tubs</b>
560	1	<b>Ecolab Rasantomat Mop Feeder</b>
561	24	<b>Matt Chrome Bar Handles</b> 392 x 35mm
562	30	<b>Chrome Brushed Handles</b> 299 x 30mm
563	40	<b>Chrome Brushed Handles</b> 232 x 32mm
564	30	<b>Chrome Polished Handles</b> 90 x 22mm
565	15	<b>Chrome Brushed Handles</b> 180 x 49mm
566	30	<b>Chrome Polished Handles</b> 340 x 29mm
567	30	<b>Chrome Polished Handles</b> 298 x 32mm

LOT NO	QTY	DETAILS
568	4	<b>White Ceramic Hand Basin</b> 610 x 465 x 135mm
569	4	<b>White Ceramic Hand Basin</b> 810 x 465 x 135mm
570	4	<b>Bathroom 2 Door Mirrored Cabinets</b> 600 x 720 x 150mm
571	2	<b>Kolo Ceramic Hand Basins</b> 590 x 470 x 140mm
572	14	<b>Bathroom Side Cabinets</b> with (2) Cupboards, Soft Close, 2 Pac, 380 x 320 x 1300mm
573	1	<b>3Kva Solar System Kit</b> Model SM66-250, incl. (12) Simax 250W, 16Amp, 19Kg Solar Panels, Sunny Boy PV Inverter, Cables, Wall Brackets, Weatherproof Enclosure, 1640 x 922 x 50mm
574	1	<b>SMA Sunny Boy 5kWa Solar Inverter (As New)</b>
575	1	<b>Macsolar Inverter</b> Model MCS2-TL2K
576	12	<b>Eltech Pole Weatherproof Distribution Enclosures (As New)</b> Model ELTCB4MIP66
577	1	<b>Enerdrive Dual Solar Panel Set</b> with Aluminium Fabricated Frame, 1100 x 1080mm
578	1	<b>Ecolab Spill Control Kit</b>
579	1	<b>3S Lighting TC-Dell 220mm</b> 2 x 26 Watt, 220mm incl. DL4 Spring Lock Cover Attachments
580	1	<b>Square Ceiling Lamp</b> 360 x 360mm
581	2	<b>Fluorescent Lights</b> incl. Tubes & Covers, 1240 x 310 x 60mm
582	1	<b>Qty of (9) Assorted Mower &amp; Irrigation Parts</b> incl. Screws, Springs, Washers, Hose Clamp & Bushes, Box Contents
583	1	<b>Qty of Assorted Hardware Items</b> incl. Door Handles, Shower Heads, Taps, Box Contents
584	1	<b>SCA Air Spray Gun (As New)</b> with 10L Paint Tank
585	1	<b>Pierlite Workshop Light</b>
586	1	<b>Pair of Ceiling Shed Lights</b> Part No. M1500-A, with (2) 15W/600V Bulbs
587	1	<b>Associated Lighting Industries Ceiling Lamp</b> 400W, 250V



LOT NO	QTY	DETAILS
588	1	<b>Aluminium Scaffolding Trestle</b> 2430 x 230 x 730mm
589	1	<b>Moretti 40cm Pedestal Fan</b> Model MRD40B
590	1	<b>Moretti 45cm Pedestal Fan</b> Model MRD45C
591	40	<b>Air Conditioner Wall Mounted Ceiling Type Fan Coil Units Water Cooled</b> Model FP-68
592	2	<b>Dynabreeze 450mm Wall Fans</b> Model FA-23181
593	1	<b>Thorn Stradalux Batten Acrylic Lamp</b> 2 x 18W Fluorescent Lights
594	4	<b>Perlite Lamps</b> 1200 x 270mm, Part No.: FSN228P9A4
595	2	<b>Florescent Lamps</b> (2) Philips TL5HE 28W Globes, 1180 x 300mm
596	1	<b>Qty of (2) Assorted Hoses</b> with Metal Attachment
597	1	<b>Metal Hand Trolley</b>
598	1	<b>Aluminium 5 Step Ladder</b>
599	1	<b>Metal Oxy Trolley</b> incl. Oxy Tips
600	1	<b>Dofair Folding Aluminium Ladder</b> Model BP-6108, 120kg Load Rated, 3.70 Mtrs
601	1	<b>Metal Bag Trolley</b>
602	1	<b>Metal Vintage Style Hand Trolley</b>
603	3	<b>Assorted Gorilla Safety Steps</b>
604	1	<b>Oxy Welding Set</b> incl. Trolley, Gauges, Hose & Welding Cutting Lance, Note: Bottles not included
605	1	<b>Qty of (2) Jacks &amp; Chain Block</b> in Aluminium Toolbox
606	5	<b>2016 Toyota Coaster Bus Double Rear Seats</b> incl. Seatbelts, Blue Fabric Seat & Back
607	1	<b>Qty of Approx. (11) 2016 Toyota Coaster Bus Rear Seat Covers</b> Blue Fabric, Box Contents
608	1	<b>Timber Shovel Handle</b> 1300mm

LOT NO	QTY	DETAILS
609	1	<b>Qty of Assorted Building Supplies</b> incl. (8) 20L Bags of Dulux 4001 Medium Flow Render, 20L Bag of 2mm Rockcote, 1/2 Bucket of 15L Rockcote Fast Bond, etc
610	1	<b>Qty of DeWalt Power Tools</b> incl. Screwdriver, Cordless Jigsaw, Cordless Circular Saw & Rechargeable Light, in Heavy Duty Plastic Carry Case, Note: No Batteries
611	4	<b>Tuffmaster Lite Type 1 Safety Helmets</b>
612	1	<b>Ryobi 150mm Double Ended Bench Grinder</b> Model HBG6RC, Single Phase, 240V, 2.5Amp
613	1	<b>GMC 250mm Sliding Mitre Saw</b> Model 255SB
614	1	<b>Makita Electric Hammer Drill</b> Model HR2811FT, incl. Drill Bits, in Plastic Carry Case
615	1	<b>Gehringssage Mitre Saw</b> Model 602
616	1	<b>Ryobi Electric Screwgun</b> Model ESD600K, in Carry Case
617	1	<b>Ozito Rotary Hammer Drill</b> Model OZRH1100A, 1100W, with Attachments, Manual, in Carry Case
618	1	<b>Stanley 104 Pce Socket &amp; Spanner Set</b> Note: Incomplete
619	1	<b>Puma 18 Gauge Braid Nailer Gun</b> Model TA-3012, 50mm, incl. Safety Goggles & Nails, in Carry Case
620	1	<b>Ozito Rotary Hammer Drill</b> Model RHD-6100, 3 Modes, 1500W, Carry Case, Manual & Accessories
621	1	<b>Qty of Assorted Cables &amp; Wire</b>
622	1	<b>Retracta Auto Rewind Hose Reel</b> with Air Hose
623	1	<b>Fabricated Stationary Motor Bracket &amp; Stand</b>
624	1	<b>Ryobi Wet &amp; Dry Vacuum Cleaner</b> Model VC20-HDRG, Note: No Cleaner Head
625	1	<b>Hitachi Electric Jack Hammer</b> Model FH-65A
626	1	<b>Makita Cordless Drill</b> 18V, Note: No Battery or Charger
627	1	<b>Qty of (2) Milwaukee Cordless Tools</b> incl. Cyber Saw & Drill, Note: No Batteries or Charges, Parts Only
628	1	<b>Ozito Demolition Breaker</b> Model OZDB45JA, 18Kg, 1700W, 45 Joule, 30mm Hex

LOT NO	QTY	DETAILS
629	1	<b>Makita Electric Hammer Drill</b> Model HR4011C, Note: Parts Only
630	1	<b>Ybico 19mm Metal Strapping Tool</b>
631	1	<b>Qty of (5) Assorted Cordless Drills</b> incl. Makita, Hitachi, Note: No Batteries or Charges, Parts Only
632	1	<b>Qty of Assorted Allen Keys</b> in Timber Box
633	1	<b>Qty of Assorted of Hardware Items</b> incl. Spanners, Hammer, Screwdriver, Measuring Tape, in Plastic Container
634	4	<b>Axis 12mm Jointers</b> 800g
635	1	<b>Pair of Towing Mirror</b> 190 x 140mm
636	1	<b>Qty of (4) Assorted Cordless Drills</b> incl. Makita, Bosch & Hitachi, Note: No Batteries or Charges, Parts Only
637	1	<b>Collectable Taplin Wood Pole Leakage Tester</b> Model D922
638	1	<b>Trade Flame Wood Burning Kit</b>
639	1	<b>Qty of Assorted Hitachi Tools</b> incl. Reciprocating Saw, (2) Drills, Angle Grinder, (8) Batteries & (2) Chargers, in Carry Bag
640	1	<b>Qty of (6) Assorted Wheel Chock Blocks</b> incl. Plastic & Timber
641	1	<b>Qty of Spray Marking Paint</b>
642	1	<b>Lockable Metal Toolbox</b> incl. Spanners, Pliers, etc, 407 x 310 x 230mm
643	1	<b>Linebacker Cable/Hose Protector</b>
644	1	<b>Qty of (6) Assorted Crafright Engineering Clamps</b>
645	1	<b>Vintage Style Brass Hand Pump</b>
646	1	<b>Qty of (3) Assorted Hand Saws</b> with Timber Handles
647	1	<b>Scorpion Generator</b> Model DY5000L, 240V, 50hz, Single Phase
648	1	<b>Full Boar FBT-1300 Inverter Generator</b> Single Phase, 4.3Hp 4 Stroke Motor, 2200W, with Key
649	1	<b>Westinghouse Generator</b> Model WHXC7000, 8.8Kva, 240V, 50hz, Single Phase

---

LOT NO	QTY	DETAILS
650	1	<b>Homelite Generator</b> Model HGN1200B, 280V, 1100W, Single Phase
651	1	<b>Scorpion Permanent Magnet Generator Pure Sine Wave Technology</b> Model PM6500LX, 5Kva
652	1	<b>Homelite Generator</b> Model HGN1200B, 280V, 1100W, Single Phase
653	1	<b>Conyers Generator</b> Powered by Honda G200 Motor, Max. Hp 5.0, Single Phase
654	1	<b>Yamaha EF1000 Inverter Generator</b> with Cover, Single Phase
655	1	<b>Kubota GH400 Generator</b> Max 13Hp/3600Rpm, on Stand with Castors
656	1	<b>Roll of Expose Wire (As New)</b> Part No.: WB2017, 20 x 1600mm
657	1	<b>Three Phase Western Electric Motor</b> Part No.: 3803460, 415 Volts, 29Kgs, 1413 RPM, 4.72 Amps
658	1	<b>Air Tank</b> Model AC2532-DT, 16L
659	1	<b>Siemens 3 Phase Electric Motor</b> 5.5Kw, 1455Rpm, New Bearings
660	1	<b>Qty of (2) Assorted Electrical Pumps</b> incl. 3 Phase Western Electric Motor, Serial No.: 5B03636 & Electric O'Hair Pumps, Serial No.: 005552
661	1	<b>Makita Chainsaw Motor</b> Model DS4610, Note: Parts Only
662	1	<b>Electric Motor</b>
663	1	<b>Telwin Moderna Stick Welder</b>
664	1	<b>Siemens 3 Phase Electric Motor</b> 0.75Kw, 1295Rpm, New Bearings
665	2	<b>Drain Grills &amp; Brackets</b> 500 x 500mm
666	1	<b>Qty of (4) Fabricated Steel Frame Drain Grills</b>
667	1	<b>Vintage Style Disston of Canada Timber Handled Saw</b> No. 7
668	1	<b>Plastic 90mm Poly Pipe Tee Pee</b>
669	1	<b>Metal Pressure Valve</b> with 2" Inlets

---

LOT NO	QTY	DETAILS
670	2	<b>Delco Remy 24V Starter Motors</b> Part No. 8200330
671	1	<b>MPV Superline Electric Finishing Sander</b> Model T4-0050
672	2	<b>Poly Pipe 3" Joiners</b>
673	1	<b>Qty of (5) Assorted Flanges</b> Part No.: PEBR16110, (4) Galvanised 110mm Diameter & (1) PVC
674	1	<b>PVC 4" Ball Valve</b>
675	4	<b>John Hardie Pope Auto Control 25mm Valve (As New)</b> with Flow Control
676	1	<b>Crompton Parkinson 240V Bore Pump</b> Model 1/SA5852B-P-RF
677	1	<b>Cannister Auger Pipe Cleaner</b>
678	1	<b>Ramset Dyna Drill</b> Model DD544
679	1	<b>AEG Grinder (As New)</b> 1 1/2 Cutters, in Case
680	1	<b>Ryobi Cordless Drill</b> Model RCD1802, with Battery, Note No: Charger
681	1	<b>Maximate Electric Sheet Finishing Sander (As New)</b> Model PBFS135
682	1	<b>Triton Multitool &amp; Combi Hammer Drill Twin Pack</b> incl. Battery, Charger & Manual
683	1	<b>Ozito 152mm Metal Cut Off Saw</b> incl. Attachments
684	1	<b>Makita Cordless Hammer Drill</b> Model BHR200, incl. (2) Batteries & Charger
685	1	<b>Ozito Electric Rotary Hammer Drill</b> Model RHD-6100, incl. Drill Bits, Chisel Bits, User Manual, in Carry Case
686	1	<b>Mattock/Hoe (As New)</b>
687	15	<b>Cyclone Plastic Multipurpose Shovels</b>
688	2	<b>Viking Johnson Irrigation Pipe Couplings</b> incl. O.D. Range 315-349mm
689	3	<b>Irrigation Pipe Couplings</b> 350mm Diameter
690	1	<b>GS Cincinnati Time Collectable Time Card Clock</b>

LOT NO	QTY	DETAILS
691	1	<b>Qty of (2) Assorted PVC Drains</b> 255 x 765mm & 255 x 685mm
692	1	<b>AVK Pipe Coupling</b> 300mm Diameter
693	2	<b>Deks Irrigation Pipe Couplings</b> 158-182mm
694	1	<b>Pipe Clamp</b> Approx. 320-360mm
695	4	<b>Pipe Couplings</b> 100mm Diameter
696	2	<b>Pipe Clamps</b> Approx. 110-130mm
697	1	<b>Pipe Clamp</b> Approx. 220-250mm
698	1	<b>Qty of (2) Irrigation Pipe Couplings</b> incl. 110 & 120mm
699	1	<b>Pipe Clamp</b> Approx. 200-250mm
700	1	<b>Lay Flat Hose</b> with Couplings, 120mm Diameter
701	2	<b>Stainless Steel 3" Ball Valve</b> Part No.: PN25 & DN80
702	1	<b>Pipe Clamp</b> Approx. 150-210mm
703	2	<b>Qtys of Assorted Irrigation Parts</b> incl. Right Angle Couplings, Poly T Pce's, Joiners, etc
704	1	<b>Box of Assorted Items</b> incl. Assorted Pop Up Sprinklers, Barbed Joiners
705	4	<b>Qtys of Assorted Plastic Irrigation Piping</b> Box Contents
706	1	<b>Qty of Assorted Irrigation Items</b> incl. T Pce's, Right Angles, Meter Timer, Sprinklers, Ball Valves, etc
707	9	<b>3" Poly T Pieces</b> for High Pressure Irrigation System
708	1	<b>Qty of Assorted Brass Irrigation Fittings &amp; Piping</b>
709	1	<b>Davey Power Master 250</b> Model PM250-0, 240V, with Silicone Carbide Seal, Single Phase, 2850Rmp
710	5	<b>Hunter Pop Up Sprinklers</b> Model G800

LOT NO	QTY	DETAILS
711	1	<b>Onga Bore Pump</b>
712	9	<b>Rainbird Stators-Screen Kits</b> Model STATSCR700-S
713	1	<b>Qty of Assorted Irrigation Sprinkler Bushings</b> 1/4-1/2", Box Contents
714	1	<b>Onga Spa Pump</b> Model 2381-1, with Heater, Installation Manual
715	4	<b>Iwaki Metering Pumps</b> Model EWN-B16VCARA, 100-240V, 0.7Mpa, Air Vents
716	1	<b>Lowara 240V Submersible Pump</b> with 7.5 Mtr Head, with Loat Switch, Made in Italy
717	1	<b>Homelite Blower Vac</b> Model GBV2400, 2400V
718	2	<b>Tow Bars</b> Note: No Balls
719	1	<b>Qty of (3) Assorted Machinery Items</b> incl. Tractor Tyne
720	1	<b>24V Alternator</b>
721	3	<b>Alternators</b> incl. Cargo Part No. 111295 & Daylec Part No. 65-0021
722	1	<b>Qty of Assorted Hardware Items</b> incl. Stanley Level, Hammer, Spanners, Box Contents
723	1	<b>Rigid Pipe Threading Machine &amp; Tools</b>
724	1	<b>Aluminium Concrete Screed/Straight Edge</b> 2420mm
725	18	<b>Copper Rods</b> 10 x 1800mm
726	1	<b>Trojan Spade</b>
727	2	<b>White Fire Safety Doors</b> with Window, 2640 x 940 x 45mm
728	1	<b>Qty of (3) Assorted Outboard Motors</b> incl. (2) Chrysler 45Hp & 6Hp Outboard Motors & Johnson 9Hp Outboard Motor
729	1	<b>Two Pce Metal Toolbox</b> on Castors, with Assorted Tools
730	1	<b>Kawasaki TD24 Straight Shaft Brush Cutter</b>
731	1	<b>Kawasaki TG25 Straight Shaft Brush Cutter</b>

LOT NO	QTY	DETAILS
732	1	<b>Ryobi Whipper Snipper</b> Bench Shaft, Model PTL3043YW
733	1	<b>Chain Pipe Vice/Clamp</b>
734	1	<b>Qty of Assorted Ropes</b> incl. Igloo Esky
735	1	<b>DeWalt Concrete Mixer Drill</b> Model D21520-XE, 230V, 530Rpm
736	1	<b>Qty of (2) Extension Cables</b>
737	1	<b>Adam Lawn Edger</b> with 2 Stroke Petrol Engine
738	1	<b>Timber Tool Box</b> with Handle & Assorted Tools, incl. Level, Spanners, Crescents, Shifters, etc
739	1	<b>Qty of Assorted Rain Weather Clothing</b> incl. Rain Coats, Trousers & Assorted Gumboots
740	1	<b>Foldup 2 Step Ladder</b>
741	1	<b>Johnson 25Hp Long Shaft Boat Motor</b>
742	1	<b>2013 Suzuki 60Hp 4 Stroke Outboard Motor</b> Model DF60AV, Serial No. 06003F-410210
743	4	<b>Patio Terrace Retractable Privacy Side Screens</b> 1800 x 3000mm
744	1	<b>Holden Cargo Barrier</b>
745	1	<b>Hearts Sport Train Hard Boxing Bag</b> on Stand
746	1	<b>Shuttle Series X Type Golf Cart</b>
747	1	<b>Yard Works Gas Bottle Trolley</b>
748	2	<b>Bins of Used Golf Balls</b>
749	1	<b>Qty of Assorted Putt-Putt Items</b> incl. Putters & Balls
750	1	<b>Qty of Assorted Golf Balls &amp; Tees</b>
751	1	<b>Vintage Style Metal Trunk</b> 840 x 500 x 350mm
752	1	<b>Boat Sand Anchor</b>
753	1	<b>Aspire Pedal Exerciser</b>
754	1	<b>Kaymar Toyota 100 Series Rear Wheel Carrier</b>



LOT NO	QTY	DETAILS
755	1	<b>Fold Up Camping Table</b> with Space for Basin, 1000 x 500 x 770mm
756	1	<b>SCA 12V Air Compressor</b> incl. Hose, Pressure Gauge, Carry Bag
757	1	<b>Autostart Multifunction Jump Starter</b> incl. Assorted Adapters, Chargers, in Carry Case
758	1	<b>Airhawk Automatic Hand Held Tyre Inflator</b> Model AHP-MC6/2, with Digital Pressure Gauge
759	2	<b>Lightforce LED Spotlight</b>
760	1	<b>Campmaster Cast Iron 3 Burner</b> Model CM1093
761	1	<b>Ningbo Toolux Lighting Co Ltd LED Work Light</b> Model TLX-1531
762	1	<b>Tactix Tackle Box (As New)</b> incl. (5) Assorted Lures
763	6	<b>Coca Cola Backpacks</b>
764	3	<b>Trafalgar First Aid Kits</b>
765	1	<b>Pair of Tusa Solla Fins (As New)</b> Model SF-22
766	1	<b>Qty of (2) Assorted Metal Jerry Can Holders</b>
767	1	<b>Roof Rack Metal Tray</b> 1050 x 900 x 130mm
768	1	<b>Victoria Bitter Series Cricket Set</b> with Team Signatures on Bat
769	1	<b>Glass Fish/Reptile Tank</b> with Lid, 550 x 300 x 310mm
770	1	<b>Plastic First Kit Container</b> Note: No Accessories
771	1	<b>First Aid Kit</b>
772	1	<b>Active &amp; Co Floor Pump</b> with Gauge
773	13	<b>Tiedown Straps</b>
774	6	<b>Retractable Umbrellas</b> with Cover
775	1	<b>Paddymade 2 Man Tent</b>
776	1	<b>Skateboard</b>

LOT NO	QTY	DETAILS
777	1	Metal Trafalgar First Aid Kit
778	1	Childrens Play Swing Rocker
779	1	Repeco Sport Floor Pump
780	1	Qty of (3) Assorted Toolboxes incl. (2) Plastic & Metal
781	1	Prolite Inductive Timing Advanced Tester
782	1	Fishing Tackle Box with Assorted Tackle
783	1	Qty of Assorted Bicycle Accessories incl. Jetblack Pump & Active & Co Combo Light Pack
784	1	Qty of (2) Assorted Helmets incl. No Fear
785	1	Fun4Four Electronic Games Tables Model FUN4FOUR, Serial No.: GE0053783, for up to 6 Players, incl. 80 Games, Extrawide 42" Multi Touch Screen, High Quality Sound System, Coin Validator, 1180 x 800 x 1060mm
786	1	Swag Note: No Mattress
787	1	24 LED Camping Lantern
788	1	ICOM IC-440N Mobile UHF Radios
789	2	Rova Media Stainless Steel Number Plate Holder with LED Light, 380 x 180mm
790	40	Jim Beam Stubbie Coolers
791	1	Harrows Darts with Flights
792	1	Steven Ring Master Leather Speed Ball Made in India
793	1	Climbing Harness
794	1	Karcher Gerni Model K2180
795	1	Double Burke & Willis Outfitters Canvas Swag
796	2	Timber Oars
797	1	Qty of (4) Assorted Vintage Style Fishing Rods & Reel incl. (3) Vintage Style Rods & Hand Reel
798	1	Black Open Face Motorbike Helmet Size S & L

---

LOT NO	QTY	DETAILS
799	1	<b>Rod &amp; Reel Combo</b> incl. Silverspin Plus 4000 Reel on Daiwa Silverspin Plus 702NHRS Rod
800	1	<b>Rod &amp; Reel Combo</b> incl. Rish Reel on Arb Garcia C-3 Rod
801	1	<b>Rod &amp; Reel Combo</b> incl. Abu Garcia Ambassadeur 6500C3 Reel on Rovex Altus Rod
802	1	<b>Rod &amp; Reel Combo</b> incl. Daiwa Digigear EG8000 Reel on Pflueger Contender Rod
803	1	<b>Rod &amp; Reel Combo</b> incl. Abu Garcia Black Max Reel on Abu Garcia Black Max Interceptor Rod
804	1	<b>Rod &amp; Reel Combo</b> incl. Jarvis Walker Reel on Abu Garcia Turbo Rod
805	1	<b>Rod &amp; Reel Combo</b> incl. Stratus 2 2001 Reel on Shimano Rex Hunt 7 General Purpose Rod
806	1	<b>Woolshed Creek Driza-Bone Jacket</b>
807	1	<b>Red Feather Adjustable Trekking Walking Stick</b>
808	1	<b>Oztrail Tourer 9 4 Person Tent</b> incl. Carry Bag
809	1	<b>Mares Vector Buoyancy Diving Vest</b> Size L
810	2	<b>Apollo Yepoon Life Buoys</b>
811	1	<b>Portable BBQ</b>
812	2	<b>Vance &amp; Hines Harley Davidson Mufflers</b>
813	1	<b>Campmaster Portable Gas Stove</b> in Carry Case
814	1	<b>Kincrome Tool Chest &amp; Trolley Combo</b> with (10) Drawers

END OF SALE

---

LOT NO	QTY	DETAILS
--------	-----	---------

---

## SPECIAL LOTS 815 TO 902 WILL BE OFFERED AT 12 NOON

- |     |   |  |
|-----|---|--|
| 815 | 1 | <b>CP 2006 Nissan Patrol Wagon</b><br>White, Manual, 4 Cylinder, Diesel<br>Engine No.: ZD30064039K<br>VIN: JN1TESY61A0387381<br>Indicating: 168,253 Kms<br>Vehicle is sold without a Statutory Warranty, is not subject to a cooling off period and is sold unregistered and without a rwc<br>BUYERS PREMIUM: 10%  |
| 816 | 1 | <b>CP 2011 Ford Ranger Dual Cab 2WD Utility</b><br>White, Automatic, 4 Cylinder, Diesel, Tow Bar, Light Bar, LED Driving Lights<br>Engine No.: WEAT1169769<br>VIN: MNALSFE90BW940020<br>Indicating: 167,456 Kms<br>Vehicle is sold without a Statutory Warranty, is not subject to a cooling off period and is sold unregistered and without a rwc<br>BUYERS PREMIUM: 10%  |
| 817 | 1 | <b>CP 2011 Hyundai iLoad Van</b><br>White, Automatic, 4 Cylinder, Diesel<br>Engine No.: D4CBB866879<br>VIN: KMFVBX7JMCU388256<br>Indicating: 177,847 Kms<br>Vehicle is sold without a statutory warranty, is not subject to a cooling off period and is sold unregistered and without a rwc<br>BUYERS PREMIUM: 10%   |
| 818 | 1 | <b>CP 1988 Nissan Patrol Wagon</b><br>White, Manual, 6 Cylinder, Petrol & LPG, Bull Bar, Spotlights, Uniden UH-077 2-Way Radio, Aerial, Side Steps, Tow Bar, Spare Tyre, Front Diff Lock, 4WD Tyres, Extra Seats Can be Added<br>Engine No.: TB42010280<br>VIN: WGY60003602<br>Indicating: 419,145 Kms<br>Vehicle is sold without a statutory warranty, is not subject to a cooling off period and is sold unregistered and without a rwc<br>BUYERS PREMIUM: 10% |
| 819 | 1 | <b>CP 1982 Jeep CJ7 Hawk Hardtop</b><br>Mustard, Manual, 4 Cylinder, Petrol<br>Safety Certificate: LV-30317798-5<br>Engine No.: 100121995<br>VIN: 1JFBM87E0BT077001<br>Indicating: 61,346 Kms<br>Vehicle is sold without a Statutory Warranty, is not subject to a cooling off period and is sold unregistered and with a current safety certificate<br>BUYERS PREMIUM: 10%  |

LOT NO	QTY	DETAILS
820	1	<p><b>CP 2006 Mitsubishi Outlander LS ZF Wagon</b>            Grey, Automatic, 4 Cylinder, Petrol            Engine No.: B8584G69MC5650            VIN: JMFXRUCU5W7U000776            Indicating: 162,611 Kms            Vehicle is sold without a Statutory Warranty, is not subject to a cooling off period and is sold unregistered and without a rwc            BUYERS PREMIUM: 10%</p>
821	1	<p><b>CP 2003 Subaru Forester Wagon</b>            White, Manual, 4 Cylinder, Petrol            Engine No.: B858616            VIN: JF2SG9KK33G017434            Indicating: 199,840 Kms            Vehicle is sold without a Statutory Warranty, is not subject to a cooling off period and is sold unregistered and without a rwc            BUYERS PREMIUM: 10%</p>
822	1	<p><b>CP 2011 Holden Commodore Wagon</b>            White, Automatic, 6 Cylinder, Petrol            Engine No.: LFW110820044            VIN: 6G1EK8E54BL540080            Indicating: 174,826 Kms            Vehicle is sold without a Statutory Warranty, is not subject to a cooling off period and is sold unregistered and without a rwc            BUYERS PREMIUM: 10%</p>
823	1	<p><b>CP 1997 Holden Commodore Utility</b>            Black, Automatic, 6 Cylinder, Petrol            Engine No.: VH664213            VIN: 6H8VSK80HVL219576            Indicating: 323,430 Kms            Vehicle is sold without a Statutory Warranty, is not subject to a cooling off period and is sold unregistered and without a rwc            BUYERS PREMIUM: 10%</p>
824	1	<p><b>CP 2013 Mahindra 4x4 Pickup Dual Cab Utility</b>            Red, Manual, 4 Cylinder, Diesel            Engine No.: 0802BMO330H            VIN: MA1TE4HGNC6E61146            Indicating: 158,000 Kms            Vehicle is sold without a Statutory Warranty, is not subject to a cooling off period and is sold unregistered and without a rwc            BUYERS PREMIUM: 10%</p>
825	1	<p><b>CP Savage 5.5 Mtr Half Cabin Fibreglass Boat</b>            on 1987 Marlin Boat Trailer, 125Hp O/B Motor, Fixed Aluminium Framed Bimini            Engine No.: A1358459            HIN: AUDD000273215            Trailer VIN: 6T6MARL1NY1W00188            Boat and Trailer are sold without a statutory warranty, are not subject to a cooling off period and are sold unregistered and without a rwc            BUYERS PREMIUM: 11%</p>

LOT NO	QTY	DETAILS
826	1	<b>CP 1996 Tilt Deck Plant Trailer</b> with Loading Racks VIN: 6H9T2000T2PC5001 Trailer is sold without a Statutory Warranty, is not subject to a cooling off period and is sold unregistered and without a rwc
827	1	<b>CP 2008 Snorkel SR4084 Rough Terrain Scissor Lift</b> Engine No.: D9057T1379 Serial No.: 50808010390 Indicating: 228.7 Hrs Snorkel is sold without a statutory warranty, is not subject to a cooling off period and is sold unregistered and without a rwc BUYERS PREMIUM: 11%
828	1	<b>CP 2016 Apollo 1104 Cab Loader Tractor</b> Red, Manual, 4 Cylinder, Diesel, 4 in 1 Bucket, Sota Tractor Fork Tynes Chassis No.: A8ET9E00119/BO2718 Indicating: 85.2 Hrs Tractor is sold without a Statutory Warranty, is not subject to a cooling off period and is sold unregistered and without a rwc BUYERS PREMIUM: 11%
829	1	<b>DEL Marino 3 Point Linkage Backhoe Attachment</b> Model RES50, incl. 400mm Bucket
830	1	<b>Two Row Marker</b> with Spring Tyne Rippers
831	1	<b>Square Fabricated Platform</b> with Grid Walkway & Lift, 2100 x 2100 x 1000mm
832	1	<b>Mobile Liquid Rubber Membrane Pumping Enclosed Tandem Axle Trailer</b> incl. Liquid Rubber HVLP 2000 Membrane Pump with (2) Comet Pumps (MP30, MP20) Delivery Hose and Twin Nozzle, Mounted on Fabricated Steel Frame, Powered by 5.5Hp Honda 4 Stroke Petrol Engine Chassis No.: OP1339 Note: No Vin Number Plate Trailer is sold without a statutory warranty, is not subject to a cooling off period and is sold unregistered and without a rwc
833	1	<b>CP 1983 Box Trailer</b> Chassis No.: BE83039 Trailer is sold without a Statutory Warranty, is not subject to a cooling off period and is sold unregistered and without a rwc
834	1	<b>CP 2018 Home Made Box Trailer</b> VIN: 6T9T20ADGJ0MR8001 Trailer is sold without a statutory warranty, is not subject to a cooling off period and is sold registered and without a rwc
835	1	<b>Husqvarna 26Hp Ride On Mower</b> Model CTH2642TRE, indicating: 46.7 Hrs, with Charger
836	1	<b>Suzuki Quad Bike</b> Indicating: 2,873 Kms

LOT NO	QTY	DETAILS
837	1	<b>CP 2011 TGB Scooter</b> Engine No.: GH5*694003 VIN: RFCBH1BHFAY694003 Indicating: 11,795 Kms Scooter is sold without a statutory warranty, is not subject to a cooling off period and is sold unregistered and without a rwc
838	1	<b>Greenfield Evolution NK2A 8.5Hp 30" Ride On Mower</b> Series Ell30
839	1	<b>CP Adly 600 XCE Quad Bike</b> Engine No.: 4X2002/24X2551 VIN: RFLBD6020DA000577 Indicating: 518 Kms Vehicle is sold without a statutory warranty, is not subject to a cooling off period and is sold unregistered and without a rwc BUYERS PREMIUM: 10%
840	1	<b>4 Bay Pallet Racking</b> incl. (5) Uprights 3660 x 830mm & (23) Crossbeams 2680 x 100 x 50mm
841	1	<b>Pump</b> Powered by Honda Motor, Single Phase, 3.5 kVa
842	1	<b>Qty of (2) Irrigation Valves</b> incl. Anti Hammer Valve & Foot Valve
843	1	<b>Steel Head Centre</b> to Suit Concreting, 1300 x 120 x 110mm
844	1	<b>Boat/Fuel Tanks (As New)</b> 1200 x 400 x 550mm
845	1	<b>Hardy Spray Tank</b> Mounted on Galvanised Frame with Delivery Reel & Suction Hose, 600 Ltr Capacity
846	2	<b>Plastic 1000L Pods</b>
847	1	<b>XL Utility Service Tray</b> incl. Side Entrance Tool Boxes, Light Bar & Central Storage, 2250 x 1800mm
848	4	<b>Atco Internal Office Dongas</b> Skid Mounted, Split Air Conditioner, Single Room & Common Room, 12 x 3 Mtrs, Category 3 BUYERS PREMIUM: 11%
849	5	<b>Galvanised Angle Iron Frames</b> with Cleats, 1700 x 1250mm
850	2	<b>Round Steel Plates</b> with Pre-Drill Holes, 1230 x 20mm
851	1	<b>Qty of Assorted Road Signs &amp; Safety Barriers</b> incl. Road Work Ahead
852	1	<b>Chep Collapsible Plastic Packing Crate</b> 775 x 830 x 970mm

LOT NO	QTY	DETAILS
853	1	<b>Easy Lift Pallet Jacket</b> 2500Kg Capacity, Note: Requires Repair
854	1	<b>2009 EMC Elite 4 Seat Resort Buggy</b> with Charger, (2) Spare Tyres, Plastic Roll Up Side, Manual, Serial No.: 09050326, Note: Requires New Batteries
855	1	<b>Brook Crompton 3 Phase Electric Pump Motor</b> Model CB653593
856	1	<b>Nylex Neverkink Heavy Duty Hose</b> Approx. 26 Mtrs
857	1	<b>Shade Cloth</b> 3200 x 2920mm
858	2	<b>Assorted Shade Cloths</b> incl. 7260 x 1760 & 8860 x 1760mm
859	1	<b>Rhino Area Rood Rack</b>
860	2	<b>Sets of (2) Toyota Side Steps</b>
861	1	<b>Qty of (4) Assorted PVC Piping Storage Compartments</b> to suit Vehicle
862	1	<b>Terracotta Garden Pot</b> 720 x 400mm
863	1	<b>Rheem Pool/Spa Heat Pump</b> Model RA8358TI-E-PD
864	11	<b>Boxes of White &amp; Cream Guocera Ceramic Tiles</b> 8 Per Box, 400 x 400mm
865	1	<b>Metal Framed Bulka Bag Holder</b> 900 x 900 x 1230mm
866	1	<b>Qty of (3) Pope Bulka Bags</b> Model SQB7A-3, 90 x 90 x 120mm
867	1	<b>Dahon Dove Uno Foldup Bike</b>
868	1	<b>Black 27 Speed Mountain Bike</b> with Front & Rear Suspension, Disc Brakes
869	1	<b>Apollo Concorde 16 Speed Black/Yellow Racing Bike</b>
870	1	<b>Trek X-Caliber 7 27 Speed Silver/Blue Mountain Bike</b> with Front Suspension, Disc Brakes
871	1	<b>Monteray Urban Cruiser 6 Speed Bike</b>
872	1	<b>Aeroflow 10 Speed Black Mountain Bike</b> with Front & Rear Suspension & Disc Brakes
873	1	<b>Diamondback 21 Speed Black/Red/White Mountain Bike</b> with Front Suspension, Disc Brakes



LOT NO	QTY	DETAILS
874	1	Schwinn Oceanside Black/Blue/White Beach Cruiser Bike
875	1	Roam Black Beach Cruiser Bike
876	1	Diamondback 21 Speed Yellow/Black Mountain Bike with Front Suspension, Disc Brakes
877	1	Mongoose Pro Rockadile 18 Speed Blue/White Mountain Bike
877.1	1	Hyperspeed 18 Speed Mountain Bike with Front & Rear Suspension, Index Shifting System
877.2	1	Crest 18 Speed Orange/Black/White Mountain Bike with Front Suspension, Disc Brakes
877.3	1	Trek 24 Speed Blue/Silver Mountain Bike with Disc Brakes
878	1	Haro Flight Line 24 Speed Black/Silver Mountain Bike with Front Suspension, Disc Brakes
879	1	Huffy 18 Speed Silver Mountain Bike
880	1	Fluid 6 Speed White Mountain Bike
881	1	Southern Star Bellavista 18 Speed White/Purple Mountain Bike with Front Suspension
882	1	Black 18 Speed Mountain Bike with Front Suspension
883	1	Raleigh Venture 18 Speed Orange/Black Mountain Bike with Front Suspension
884	1	Flight 6 Speed Blue/Pink/White Beach Cruiser Bike
885	1	Fuji 21 Speed Blue/Black/White Mountain Bike with Front Suspension
886	1	Avanti 21 Speed Black/Red Mountain Bike with Front Suspension, Disc Brakes
887	1	Crane 6 Speed Metallic Blue Hinge Folding Bike Shimano Revo Gear System, Rack, Stand, Bell
888	1	Avanti Blade 24 Speed Racing Bike
889	1	Repco 18 Speed White/Blue Mountain Bike with Front Suspension, Carry Basket
890	1	Mongoose Fireball 8 Speed Grey/Brown Mountain Bike with Front Suspension, Disc Brakes
891	1	Southern Star Bellavista 18 Speed White/Purple Mountain Bike with Front Suspension
892	1	18 Speed White Mountain Bike with Front & Rear Suspension

---

LOT NO	QTY	DETAILS
893	1	Tourex X-Train 60 18 Speed Blue/Pink/White Mountain Bike with Front Suspension
894	1	Airwalk Girls Bike
895	1	Giant Reign 3 27 Speed Silver/Black Mountain Bike with Front & Rear Suspension, Disc Brakes, Note: Requires Repair
896	1	Huffy Blue/White Beach Bike
897	1	Dirt Burner 02 7 Speed Yellow/Black Mountain Bike
898	1	Thomas the Tank Engine Bikes Bike
899	1	Scooter
900	1	Qty of (2) Assorted Scooters incl. MPG & Park Pro
901	1	Trikke Tech T8 Series 3 Wheel Carving Scooter
902	1	Diamondback Trailabuggy Carrier

# ONLINE AUCTION

UNDER INSTRUCTIONS FROM THE PUBLIC TRUSTEE OF QLD - CRIMINAL CONFISCATIONS & PRIVATE VENDORS

## PRESTIGE, QUEENSLAND HERITAGE & PERSONALISED NUMBER PLATES

AUCTION COMMENCES 30 MAY AT 12 NOON AND CLOSES 4 JUNE AT 7.00PM

For registration & pre bidding go to our website [www.quidauctioneers.com.au/onlineauction.aspx](http://www.quidauctioneers.com.au/onlineauction.aspx)  
and create an account to bid online



PRESTIGE: "06", "01", "RENTER", "QUIK 1", "EXOTIC", "FERARY", "4 HIRE",  
"SL AMG", "MODENA", "WOT A QT", "CAIRNS", "LEE 02".

QLD HERITAGE PLATES: "Q 1008", "Q 1011", "Q 1080", "Q 1088",  
"Q 1800". PERSONALISED: "12AHP", "0000MM", "MXS ♦ 17", "EAT ♦ 29".

MOTORCYCLE: "65 OBM".

**VIEWING FRIDAY 31 MAY, 8.30AM - 5PM**

**AT QAID AUCTIONEERS, 401 SHERIDAN STREET, CAIRNS NORTH**

Visit our website to subscribe for our General Goods & Chattels Flyer & Catalogue

[www.quidauctioneers.com.au](http://www.quidauctioneers.com.au)

Note: An 11% (GST Incl.) Buyers Premium will be added to the knockdown price of each lot sold. This is a GST Incl. Sale.

**Quaid**  
AUCTIONEERS

**AUCTIONEERS & VALUERS**  
401 Sheridan Street, Cairns North - Phone 4051 3300

Whilst care has been taken in the preparation of this brochure, and information has been derived from sources believed to be reliable, the Vendor and /or Agent expressly disclaim responsibility for any errors or omissions and do not warrant the accuracy of details herein. All interested parties should make their own enquiries, searches and inspections.

# IMPORTANT NOTICE

## **Electrical Power Tools and Equipment (Inc. electrical leads)**

The electrical articles in this auction have not been proved to be electrically safe. The electrical articles have not been tested by a qualified electrical worker and have not been proved to be electrically safe.

### **General advice on how to use second-hand electrical power tools and equipment (including electrical leads) safely**

**General safe use** advice for electrical power tools and equipment etc. intended for use with rated voltage of not more than 250V for single phase appliances and 480V for other appliances.

This advice is not intended to replace specific manufacturer's information but can be used as a general guide.

This advice does not cater for young children or people who are physically weak.

You are urged to:

- Use the power tool only for its intended purpose.
- If the power tool is for indoor use only, do not use outdoors.
- Do not immerse the power tool in water unless it is designed for this purpose.
- Keep hands, fingers, feet, toes and hair away from dangerous moving parts, cutting blades and the like.
- Do not use electrical power tools in the rain.
- Make sure you have dry hands when operating an electrical power tool.
- Do not use a damaged power tool.
- A power tool may not be intended for use by children or people with an illness or disability without supervision.
- Young children should not be allowed to play with the power tool.
- Some power tools require special precautions for installation or user maintenance or both.
- The plug must be removed from the socket-outlet before any cleaning or maintenance is done.
- Do not place cord extension sockets or portable power outlet boards where they may be splashed or where moisture may get in.
- Ensure ventilation holes or outlets are not blocked or partially obstructed.
- If a fixed power tool does not have a supply cord and plug or other means for disconnection from the supply, a means for disconnection must be incorporated into the fixed wiring according to the Wiring Rules.
- If the supply cord or plug is damaged:
  - The manufacturer or its service agent or a similarly qualified person must replace the cord to prevent an accident.
  - Power tools with specially prepared cords must be replaced by a special cord or assembly available from the manufacturer or its service agent.
  - Other power tools that have a supply cord that cannot be replaced should be scrapped.
- The power tool should be maintained in order to ensure a long, useful life and to protect the operator against electric shock or mechanical mishaps.
- A safety switch can enhance electrical safety when using electrical power tools.